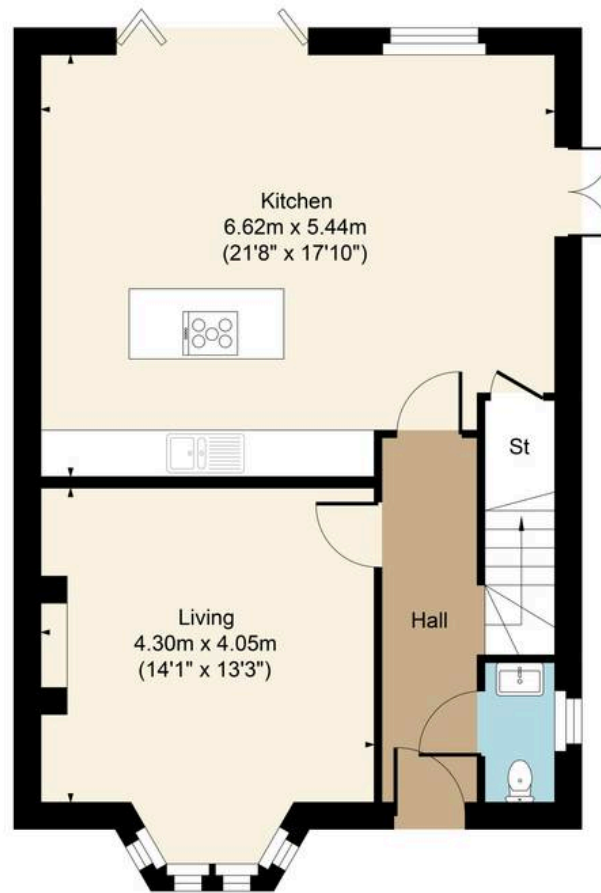




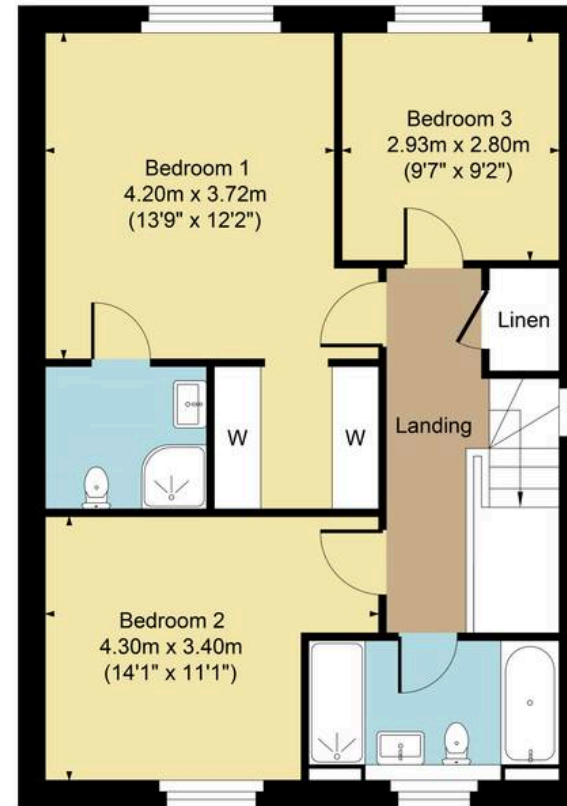
Plot 3, Bourton-on-the-Water, Station Road



Plot 3, Station Road, Bourton, GL54 2ER
Total Approx. Gross Area:- 129.09 sq.m. 1389 sq.ft.



Ground Floor



First Floor

FOR ILLUSTRATIVE PURPOSES ONLY-NOT TO SCALE
The position & size of doors, windows, appliances and other features are approximate only.
□ Denotes restricted head height
www.dmlphotography.co.uk