



Stonefern Court, Stow Road, Moreton-In-Marsh





Located in a sought after town, this 2-bedroom flat presents a fantastic opportunity for first-time buyers or investors looking to expand their property portfolio. Situated on the first floor, this property boasts neutral decor throughout, providing a blank canvas for personalisation. The well-designed layout includes two generously sized bedrooms, living/dining room, separate kitchen and a bathroom.

Externally one of the standout features of this property is the single garage and allocated parking space, providing convenient storage solutions and hassle-free parking.

With local amenities just a stone's throw away and the train station offering direct links to London, this flat offers the perfect blend of comfort and convenience.

EPC: C

Council Tax Band: C

Tenure: We believe the property to be **Leasehold**. We believe the length of the lease is 99 years starting in 1986. Potential purchasers should obtain confirmation of this from their solicitor prior to exchange of contracts.

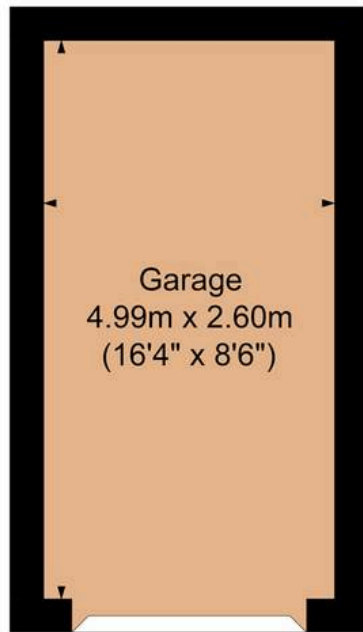
Moreton in Marsh is a north Cotswold town offering a broad range of local amenities, with library, post office, primary school, North Cotswold Hospital, sports facilities and swimming pool open to the public at the renowned Fire College, pubs, hotels and many specialist shops. Moreton in Marsh is also host of the largest street market in the Cotswolds which runs every Tuesday, and is a stones throw away from Batsford Arboretum and Gardens and the Cotswold Falconry Centre. Moreton In Marsh also has its train station, with a direct line running regularly between Worcester and London Paddington.



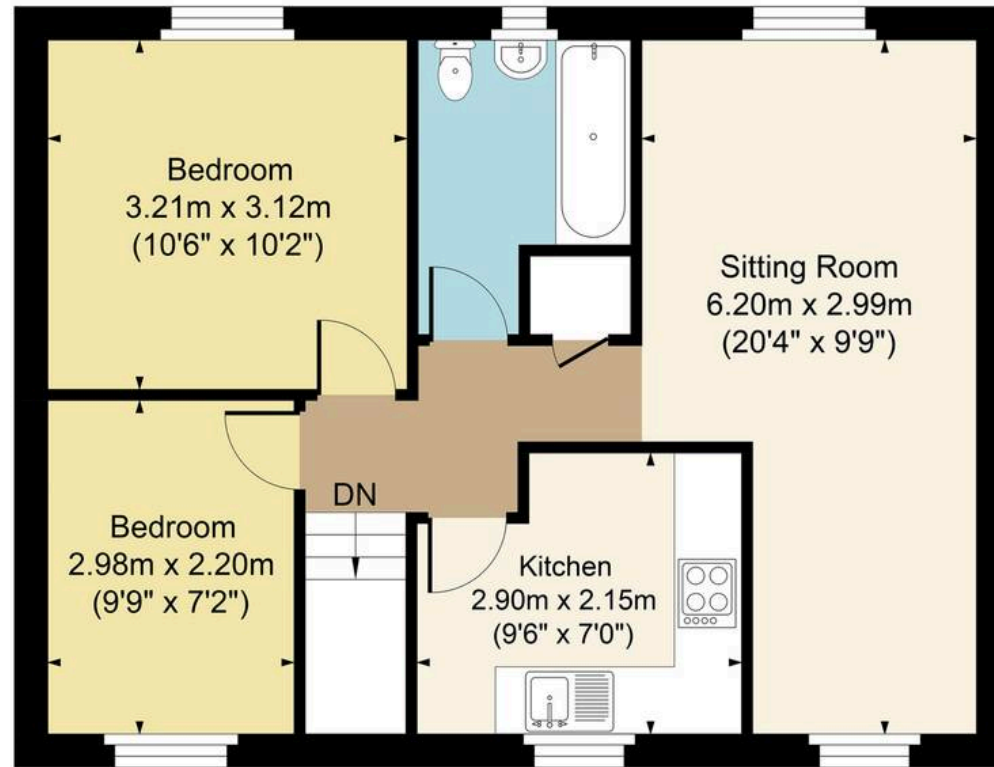




Main House Approx. Gross Internal Area:- 51.46 sq.m. 554 sq.ft.  
Garage Approx. Gross Area:- 12.97 sq.m. 140 sq.ft.  
Total Approx. Gross Area:- 64.43 sq.m. 694 sq.ft.



Garage



First Floor

FOR ILLUSTRATIVE PURPOSES ONLY-NOT TO SCALE  
The position & size of doors, windows, appliances and other features are approximate only.  
□ □ □ Denotes restricted head height  
[www.dmlphotography.co.uk](http://www.dmlphotography.co.uk)