



HARRISON  
Sales &  
Lettings  
HARDIEN

Charlesway, Longborough  
Moreton-In-Marsh





Located within an exclusive neighbourhood, this stone-built, six-bedroom detached house presents a rare opportunity for those seeking a unique property offering. Boasting a one-bedroom annexe complete with a kitchen, living area, and shower room, this residence offers versatile living options suitable for a range of lifestyles.

Upon entering the property, a spacious entrance hall sets the tone for the rest of the residence. The ground floor comprises communal living spaces, including a generously proportioned living room and dining area, kitchen with access to the lean-to utility room, two double bedrooms & a bathroom with tub and separate shower cubicle.

Ascending to the first floor, a thoughtfully placed study area provides a quiet retreat for work or study. Then you will find two further bedrooms, one of which with an en-suite bathroom and then the family bathroom.

This property, while brimming with potential, is in need of refurbishment throughout, allowing the discerning buyer the chance to tailor the space to their exact specifications and taste.

EPC Rating: TBC

Council Tax Band: F

Tenure: Freehold

What3Words: belts.dragonfly.recover

The attractive village of Longborough is situated between Moreton In Marsh and Stow On The Wold just off the Fosse Way. Longborough boasts a village shop with cafe, primary school, church and pub. Longborough also hosts a famous opera festival every year. There is also a thriving village hall.

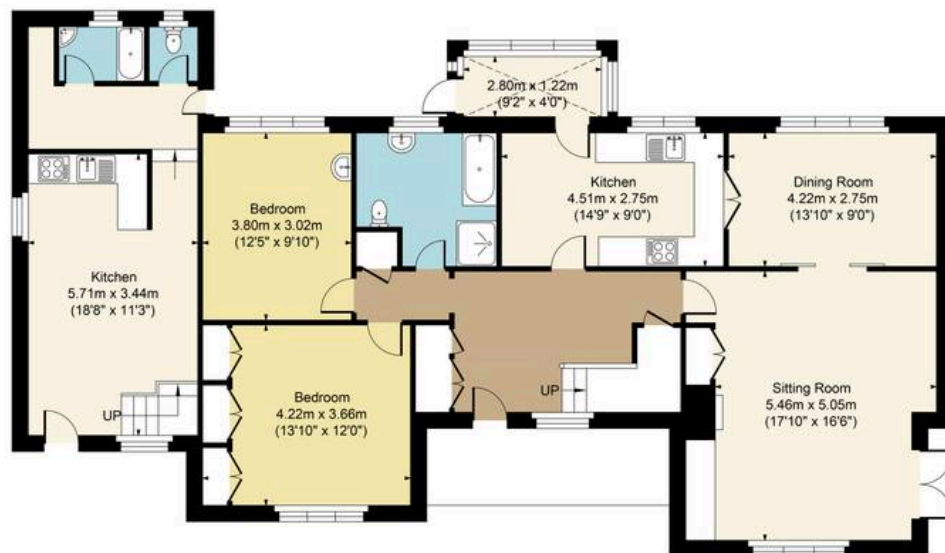






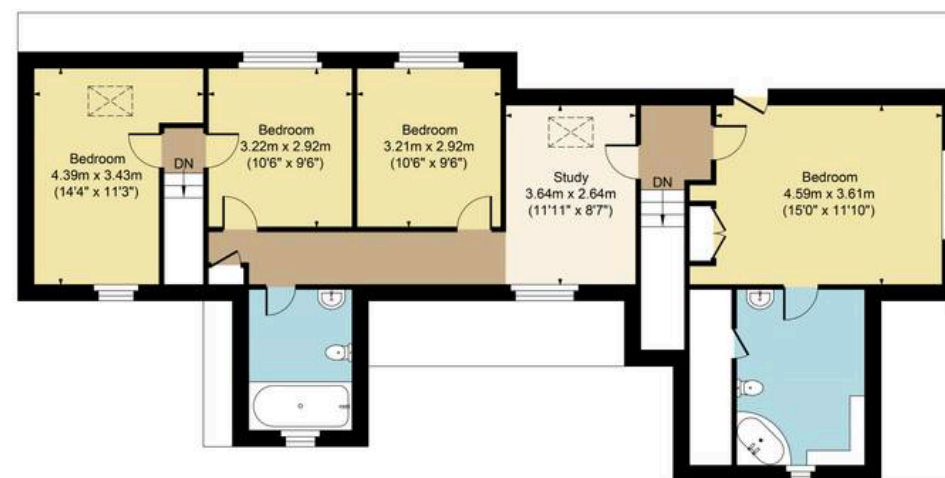


Main House Approx. Gross Internal Area:- 188.01 sq.m. 2024 sq.ft.  
Annexe Approx. Gross Area:- 43.62 sq.m. 470 sq.ft.  
Total Approx. Gross Area:- 231.63 sq.m. 2494 sq.ft.



Annexe

Ground Floor



Annexe

First Floor

FOR ILLUSTRATIVE PURPOSES ONLY-NOT TO SCALE  
The position & size of doors, windows, appliances and other features are approximate only.  
□□□□ Denotes restricted head height  
[www.dmlphotography.co.uk](http://www.dmlphotography.co.uk)