



Meadow View, Darlingscott
Shipston-On-Stour



This charming stone-built detached house presents an opportunity for those seeking a blend of character and modern comfort. Boasting a total of three well-appointed bedrooms, with the master suite conveniently situated on the ground floor, complete with its own en-suite bathroom for added privacy and convenience.

Beyond the welcoming entrance, it a open hallway leading to a thoughtfully designed layout that encompasses a dedicated study, a utility room, a well-equipped kitchen/breakfast room, and downstairs toilet. The heart of the home unfolds in the form of a spacious living room adorned with a log-burning stove. Seamlessly interconnected with the living area is a separate dining room. Ascend the stairs to the upper level where two additional bedrooms are located, sharing access to a centrally positioned family bathroom.

Noteworthy features include a garage providing secure parking or additional storage space, along with off-street parking for two cars. The exterior of the property is characterised by a front grassed garden, lending a touch of greenery, while a rear courtyard patio offers a private sanctuary.

EPC Rating: TBC

Council Tax Band: G

Tenure: Freehold

Shipston On Stour enjoys a multitude of facilities including various shops, pubs, restaurants and community-led services. There is both primary and secondary schooling in the town and the nearby town of Moreton in Marsh offers a mainline hourly train service between Worcester and London Paddington, via Oxford.

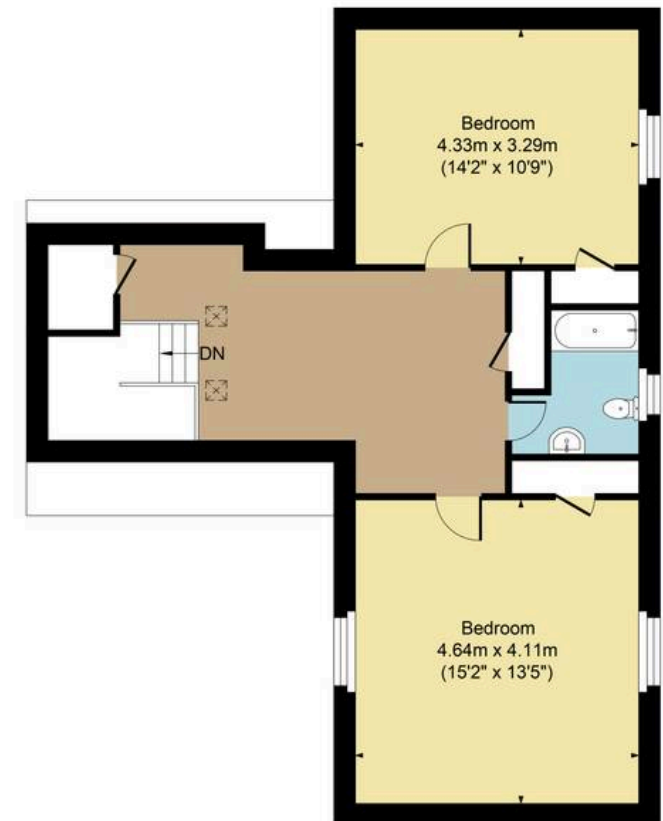




Main House Approx. Gross Internal Area:- 189.38 sq.m. 2038 sq.ft.
Garage Approx. Gross Area:- 17.28 sq.m. 186 sq.ft.
Total Approx. Gross Area:- 206.66 sq.m. 2224 sq.ft.



Ground Floor



First Floor

FOR ILLUSTRATIVE PURPOSES ONLY-NOT TO SCALE
The position & size of doors, windows, appliances and other features are approximate only.
□□□ Denotes restricted head height
www.dmlphotography.co.uk

High Street, Moreton In Marsh
Gloucestershire, GL56 0HA

01608 651000 harrisonhardie.co.uk