



Hospital Road, Moreton-In-Marsh



This charming mid terrace Cotswold stone cottage presents a rare opportunity to acquire a delightful 3-bedroom property in the sought-after location of Moreton-in-Marsh. Boasting a versatile layout, the cottage offers an ideal setting for family living, a lock-up-and-leave retreat, or a lucrative investment venture.

Upon entering the property, one is greeted by a well-proportioned kitchen/breakfast room, two inviting reception rooms, and a conservatory that floods the space with natural light and a downstairs toilet.

On the first floor you will find, three double bedrooms, offering comfortable accommodation for all residents, and is further enhanced by a modern shower room which was replaced this year.

The property also benefits from a generously sized garden with two patio areas, a well-maintained lawn, a shed, and two ponds. Additionally, the cottage features convenient parking for two vehicles, ensuring practicality alongside its characterful appeal. Enhanced with double glazing and central heating throughout, this cottage embodies both comfort and charm in an enviable location.

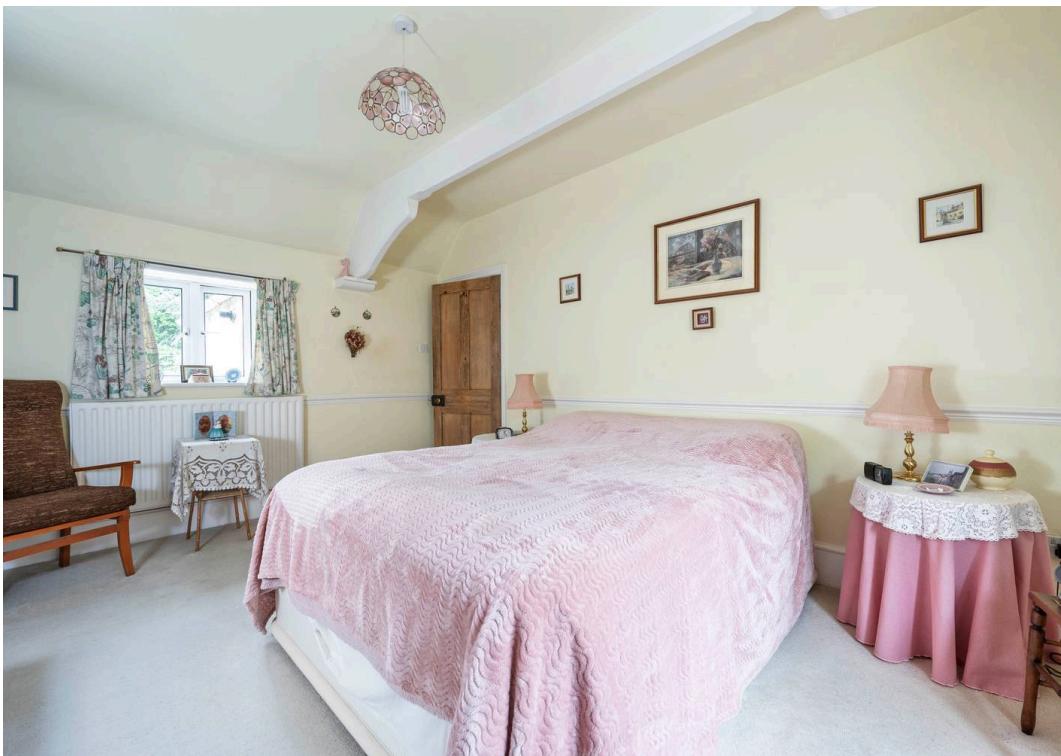
EPC Rating: C

Council Tax Band: D

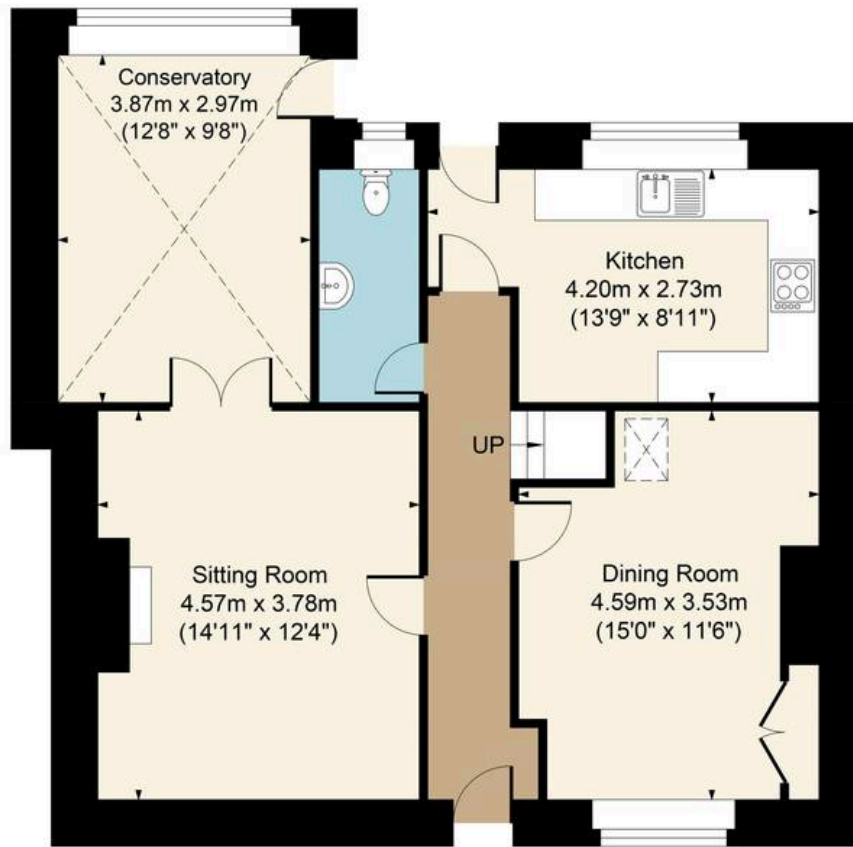
Tenure: Freehold

Moreton in Marsh has been a prosperous market town for many years - and the commercial tradition continues today, with weekly Tuesday markets and a thriving high street that provides residents with a wide range of amenities. The town enjoys excellent public transport links including a direct rail link to London Paddington (via Oxford), and amenities include two large supermarkets, two smaller food stores and a variety of tearooms, cafes, shops, and pubs.

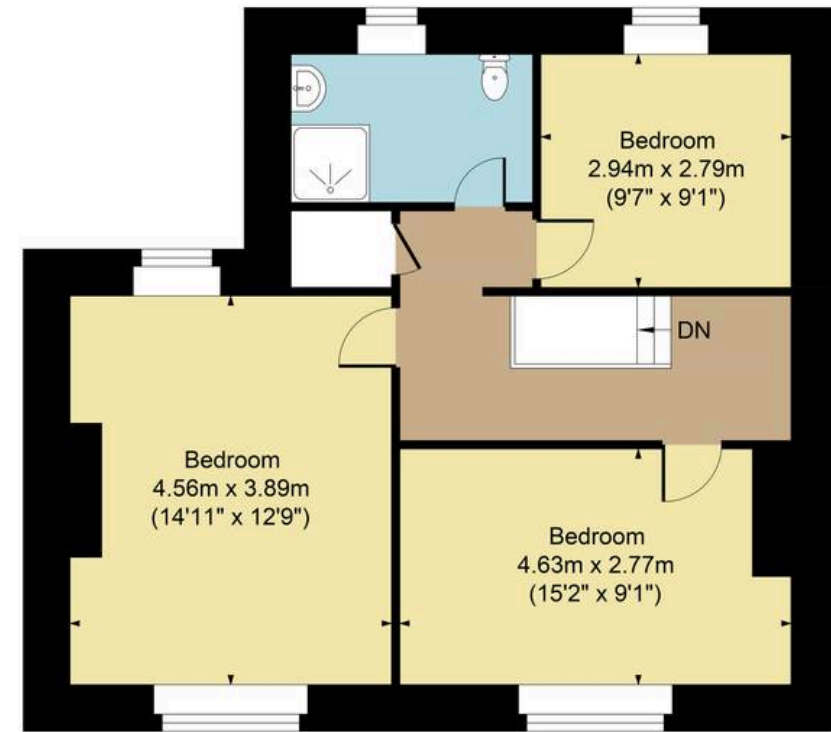




Main House Approx. Gross Internal Area:- 123.56 sq.m. 1330 sq.ft.
Total Approx. Gross Area:- 123.56 sq.m. 1330 sq.ft.



Ground Floor



First Floor

FOR ILLUSTRATIVE PURPOSES ONLY-NOT TO SCALE
The position & size of doors, windows, appliances and other features are approximate only.
--- Denotes restricted head height
www.dmlphotography.co.uk