



HARRISON
Sales &
Lettings
HARDEN

Church Street, Weston-Subedge
Chipping Campden



Nestled in a picturesque setting with panoramic views over the neighbouring countryside and fields, this delightful 3-bedroom semi-detached house offers a unique living experience reminiscent of a converted old school house. Positioned as the end property in a row of three, this charming residence boasts a converted garage which now boasts an annexe with the flexibility to be utilised as either two bedrooms or one bedroom plus a living room, complete with a modern shower room.

Upon entering the property, one is greeted by the serene atmosphere and abundant natural light that floods the interiors. The spacious central hall/office space seamlessly connects the living areas, offering a versatile space suitable for modern living and entertaining alike. The spacious kitchen commands attention with its triple aspect views providing a welcoming environment for culinary enthusiasts.

The accommodation encompasses three well-appointed bedrooms within the main house, ensuring ample space for a growing family or visiting guests. Complementing the bedrooms are two bathrooms, along with an additional downstairs toilet for added comfort.

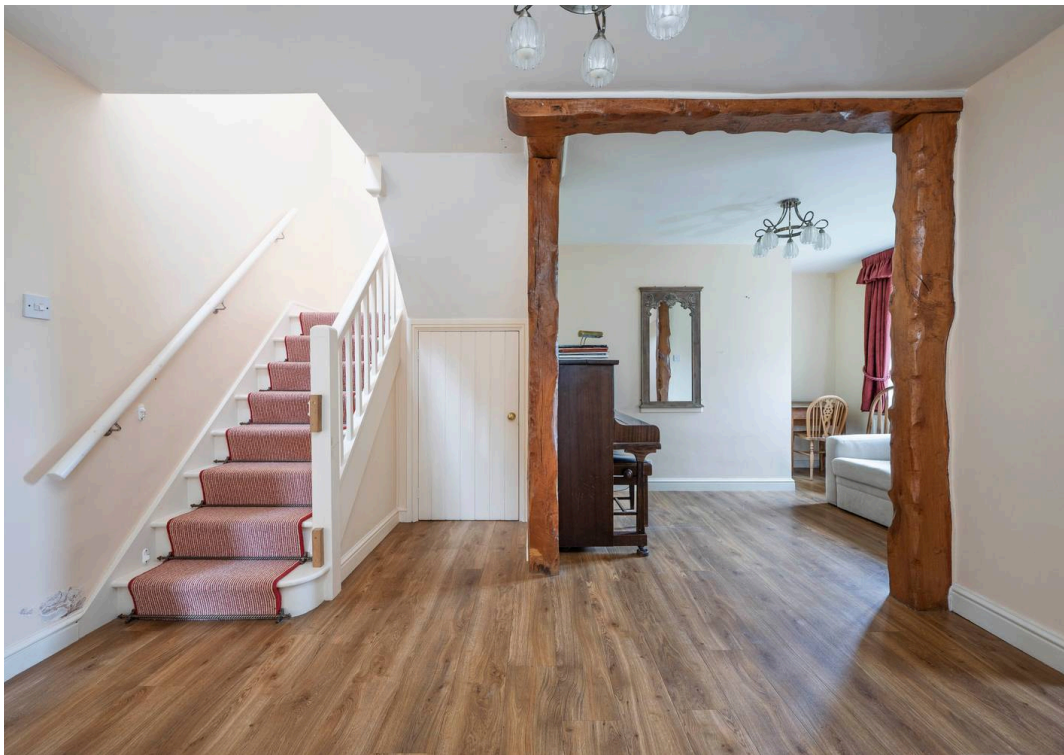
Boasting direct access to the village green with a playpark, residents can enjoy a serene lifestyle with the great outdoors at their doorstep. The annexe offers a private retreat or potential rental opportunity, enhancing the property's versatility and appeal.

EPC Rating: E
Council Tax Band: E

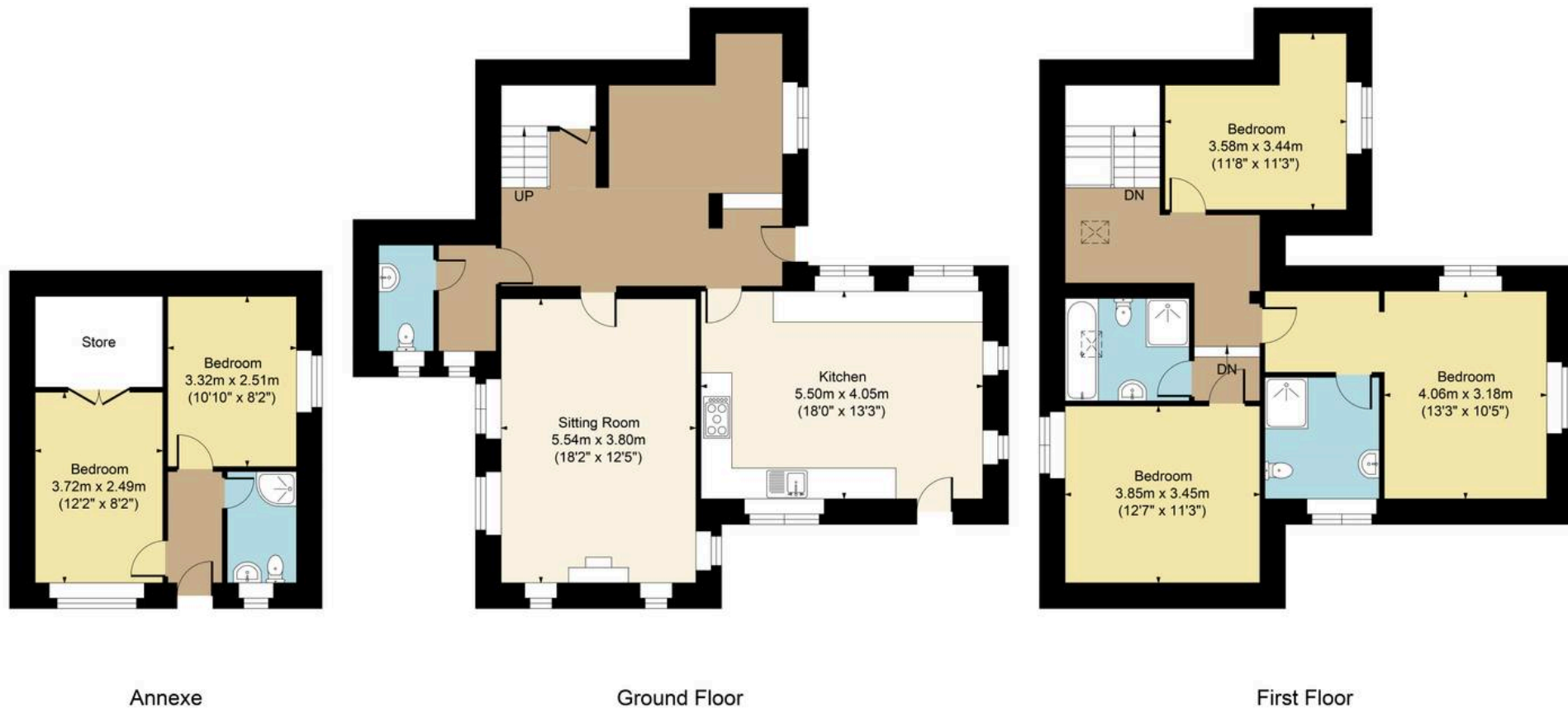
Tenure: Freehold

Available with no onward chain, this property presents a rare opportunity to acquire a characterful residence.





Main House Approx. Gross Internal Area:- 140.33sq.m. 1510 sq.ft.
 Annexe Approx. Gross Area:- 28.51 sq.m. 307 sq.ft.
 Total Approx. Gross Area:- 168.84 sq.m. 1817 sq.ft.



FOR ILLUSTRATIVE PURPOSES ONLY-NOT TO SCALE
 The position & size of doors, windows, appliances and other features are approximate only.
 □□□ Denotes restricted head height
www.dmlphotography.co.uk