



HARRISON
Sales &
Lettings
ARDEN

East Street, Long Compton
Shipston-On-Stour



Nestled in the historic, desirable village of Long Compton this two-bedroom detached character cottage boasts space, light and original features throughout.

Walking through the front door into Windrush Cottage you are greeted by the instant charm of the property. The dining room with Victorian style range cooker keeping with the original features of the property. Flowing through to the separate utility room and character kitchen with direct access to the garden. The family bathroom with bath tub and over head shower is also on the ground floor.

The sitting room is light and cosy with feature fire place and log burner. Stairs leading from the sitting room up to two double bedrooms.

Stepping outside, the property offers a rear enclosed garden that is part paved and laid to lawn with an additional outbuilding. The property benefits from an off-road parking space.

The cottage has recently been professionally re-decorated throughout and is ready to move in. The boiler has also recently been serviced and tested.

EPC Rating: E

Council Tax Band: C

Tenure: Freehold

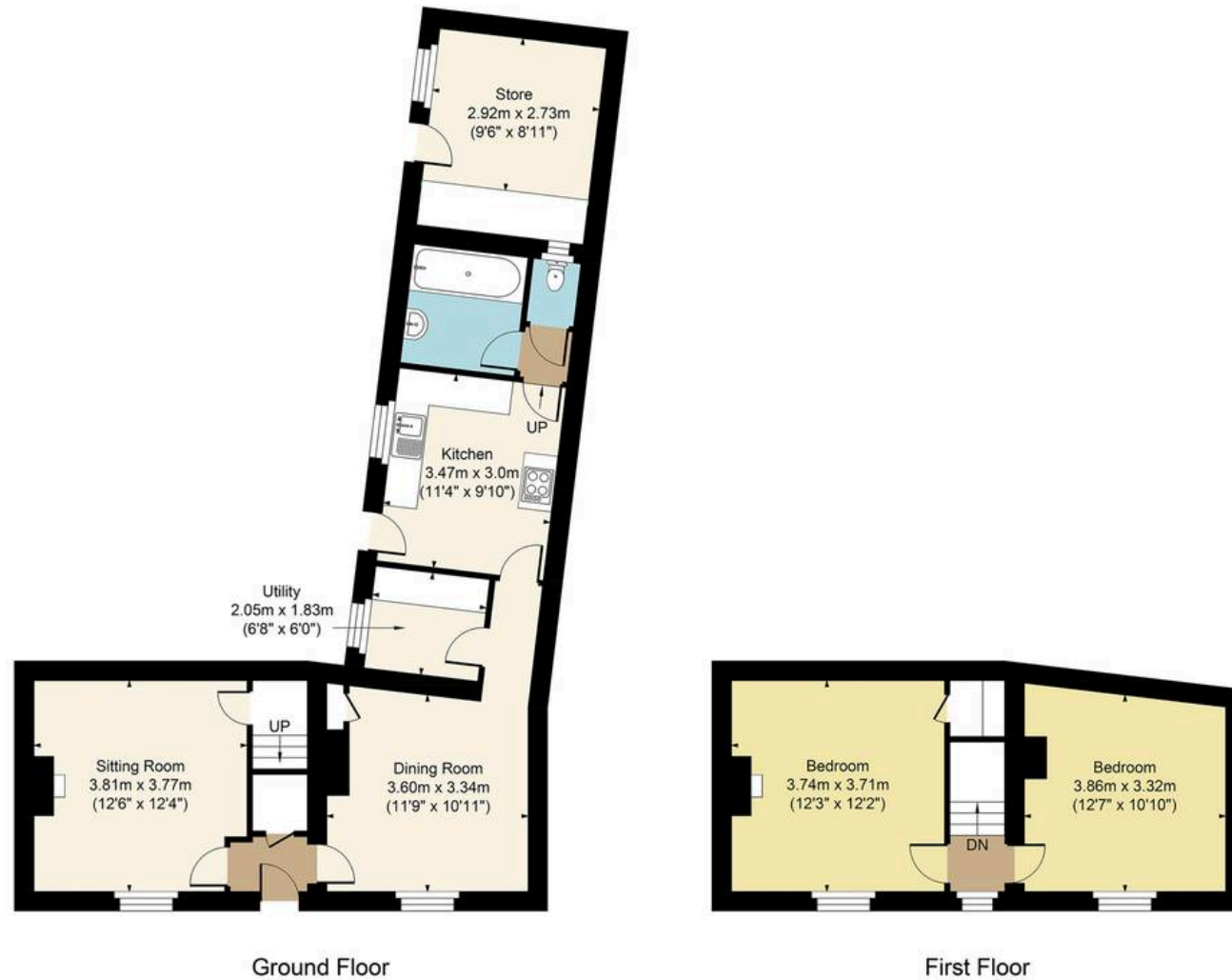
Long Compton offers a plethora of walking routes, allowing residents to explore the beauty of the surrounding countryside and soak in the serenity of rural living. There is also a local pub, shop and primary school in the village.

Whether you are seeking a permanent residence or a weekend retreat, this charming cottage presents a unique opportunity to embrace a relaxed lifestyle in a picturesque setting.





Main House Approx. Gross Internal Area:- 100.36 sq.m. 1080 sq.ft.
Total Approx. Gross Area:- 100.36 sq.m. 1080 sq.ft.



FOR ILLUSTRATIVE PURPOSES ONLY-NOT TO SCALE
The position & size of doors, windows, appliances and other features are approximate only.
[---] Denotes restricted head height
www.dmlphotography.co.uk

High Street, Moreton In Marsh
Gloucestershire, GL56 0AF

01608 651000 harrisonhardie.co.uk