



Fallon Lane, Bretforton
Evesham



This charming property presents a rare opportunity to acquire a beautifully modernised 3-bedroom detached bungalow set on a large plot along a quiet country lane, boasting picturesque open field views to the front. Upon approach, the property impresses with a large sweeping driveway that offers ample parking space for multiple vehicles. The interior of the home is equally delightful, as you enter the property, the spacious hallway leads to a modern kitchen, equipped with a spacious dining area to entertain or relax in, the other side of the hallway leads to the sitting room which offers another inviting space to relax by the warmth of its own log burner this room flows to the garden room that seamlessly connects to the surrounding outdoor oasis through bifold doors. Further down the hallway the principle bedroom complete with a dressing room area and en suite bathroom. Two additional double bedrooms one with shower room. Renovated to a high standard throughout, the property exudes a sense of contemporary comfort and style, with modern amenities and beautiful wood flooring enhancing the living spaces. Noteworthy features include wheelchair accessibility, a utility room and adjoining wc, new windows, and outbuildings that include a workshop and two large garages, providing ample storage options.

Step outside into the beautiful wrap-around garden that envelops the property, offering a secluded sanctuary. There is plenty of outdoor space with different options in sections of the garden, ample room for entertaining guests or simply unwinding in nature's embrace, the garden presents endless opportunities for enjoyment and relaxation.

Fallon Bank would also suit anyone wanting to extend for a larger family house or improve the footprint of the property, subject to all usual consent.





Fallon Bank, Fallon Lane, Bretforton, WR11 7GZ

Main House Approx. Gross Internal Area:- 160.17 sq.m. 1724 sq.ft.

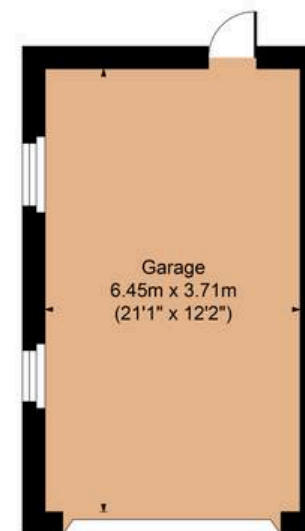
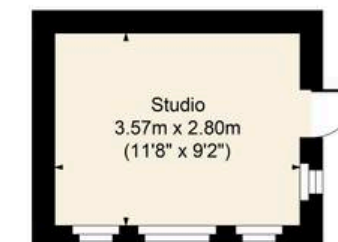
Studio/Outbuilding Approx. Gross Area:- 20.97 sq.m. 226 sq.ft.

Garage Approx. Gross Area:- 36.68 sq.m. 395 sq.ft.

Total Approx. Gross Area:- 94.53 sq.m. 2345 sq.ft.



Ground Floor



Ground Floor

FOR ILLUSTRATIVE PURPOSES ONLY-NOT TO SCALE

The position & size of doors, windows, appliances and other features are approximate only.