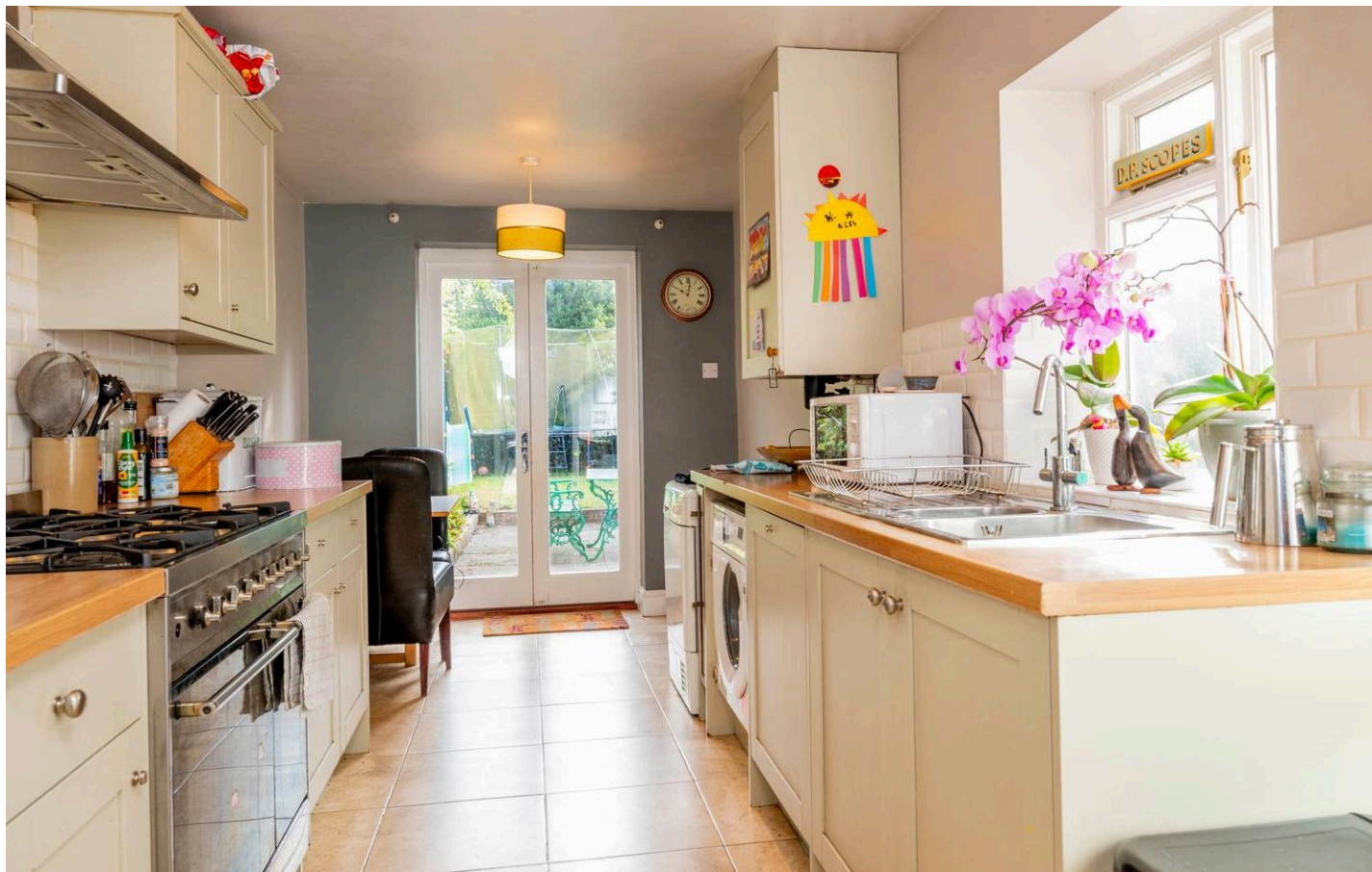




HARRISON
Sales &
Lettings
HARDY

Evenlode Road, Moreton-In-Marsh



Situated in a convenient sought after location within walking distance to Moreton in Marsh High Street and local amenities, this well-appointed 4-bedroom end of terrace house offers a perfect blend of Victorian charm and modern comforts.

The ground floor features a galley style fitted kitchen diner complete with French doors leading out to the rear garden. The living room is both light-filled and spacious, boasting character feature fireplaces.

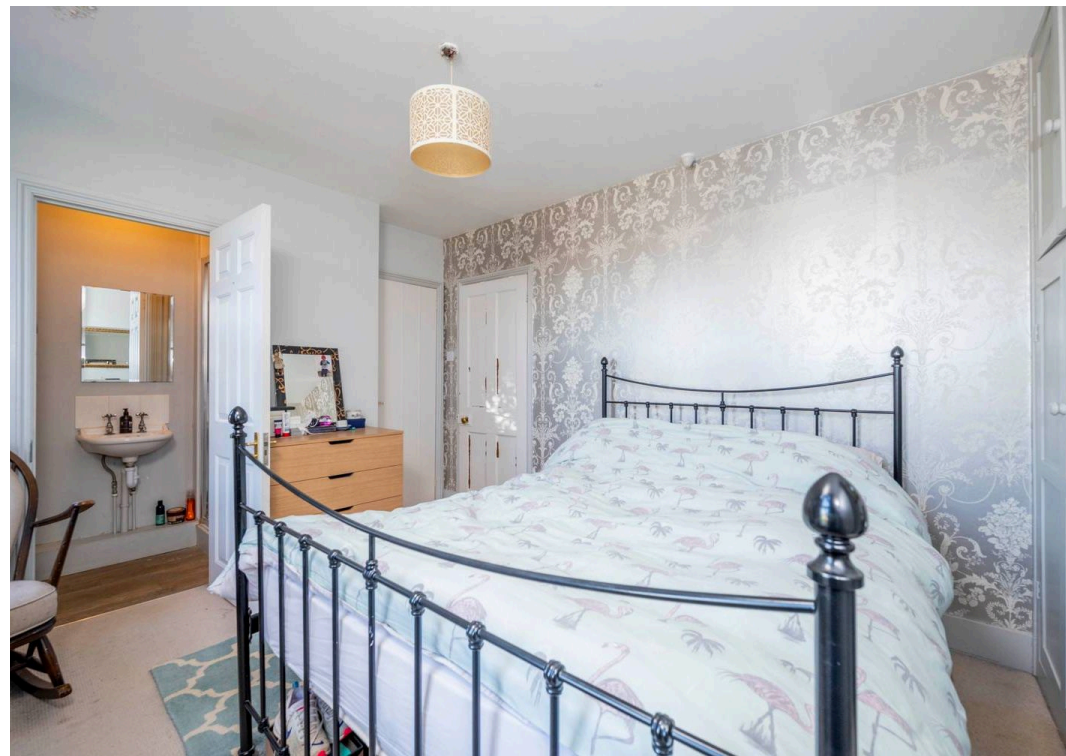
This property offers versatile accommodation, on the first floor two double bedrooms and one single bedroom, the principle bedroom benefits from an en-suite shower room. Also on this floor there is a family bathroom with a bath. On the top floor, a larger double bedroom with wooden flooring.

The large long rear garden presents plenty of potential for outdoor enjoyment and landscaping opportunities.

Additional features of this property include gas central heating and double glazed windows.

Fairview Terrace is within close proximity to Moreton in Marsh railway station, offering direct links to Paddington, London, ideal for commuters or those seeking easy access to the city.

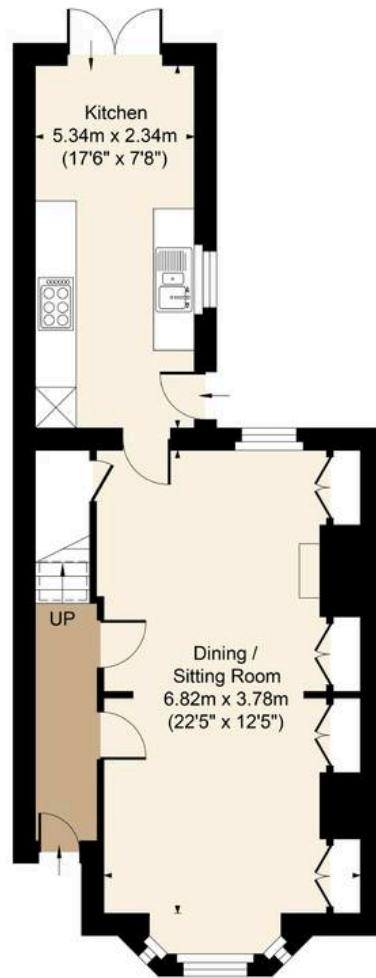




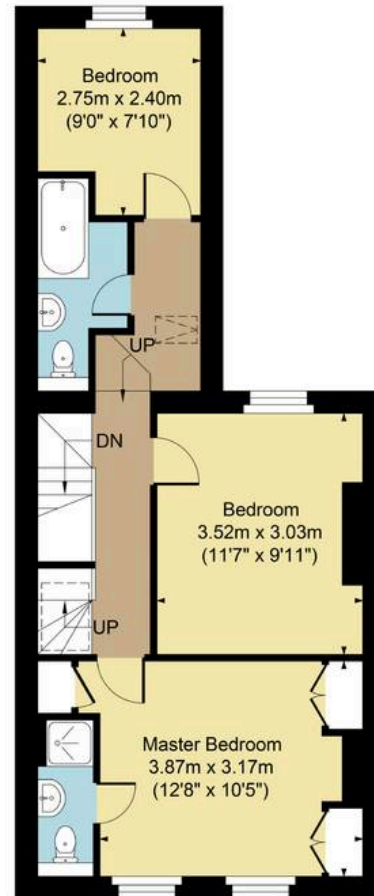
4 Fairview Cottages, Moreton GL56

Main House Approx. Gross Internal Area:- 113.0 sq.m. 1216 sq.ft.

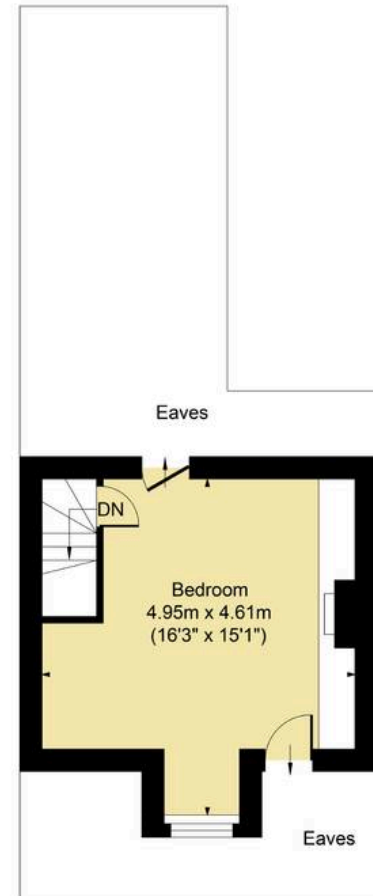
Total Approx. Gross Area:- 113.0 sq.m. 1216 sq.ft.



Ground Floor




First Floor



Second Floor

FOR ILLUSTRATIVE PURPOSES ONLY-NOT TO SCALE

The position & size of doors, windows, appliances and other features are approximate only.

 Denotes restricted head height

www.dmlphotography.co.uk

High Street, Moreton-In-Marsh

Gloucestershire, GL56 0AF