



HARRISON  
Sales &  
Lettings  
HARDEN

# Bowling Green Court Hospital Road, Moreton-In-Marsh

Moreton-In-Marsh



5 Bowling Green Court is a very well presented and light ground floor two bedroom retirement apartment situated within walking distance of the town centre.

The front door takes you into the spacious hallway with storage cupboard to the right, and a further cupboard that houses the new boiler to the left. Further along the two bedrooms open off the hall on each side. Both bedrooms doubles, are light, with views to over the gardens, and also have fitted wardrobes.

Further down the hall is the well fitted bathroom with extended shower and seat.

At the end of the hall is the bright and spacious sitting-dining room with French doors opening out to a private seating area and with open access to the landscaped gardens. Off the sitting room is the door to the kitchen with fitted units, and which opens out to a lovely conservatory in use as a dining area.

The conservatory doors open out to a beautiful private patio with views of the manicured communal gardens and with far reaching countryside views.

There is allocated residents parking with further general spaces for visitors.

The current maintenance charge is approx.£307pcm which briefly includes: an onsite resident manager during week days, maintenance of all communal grounds, building insurance, a guest suite available to book for friends and relatives for a small fee, and a contribution to the sinking fund.

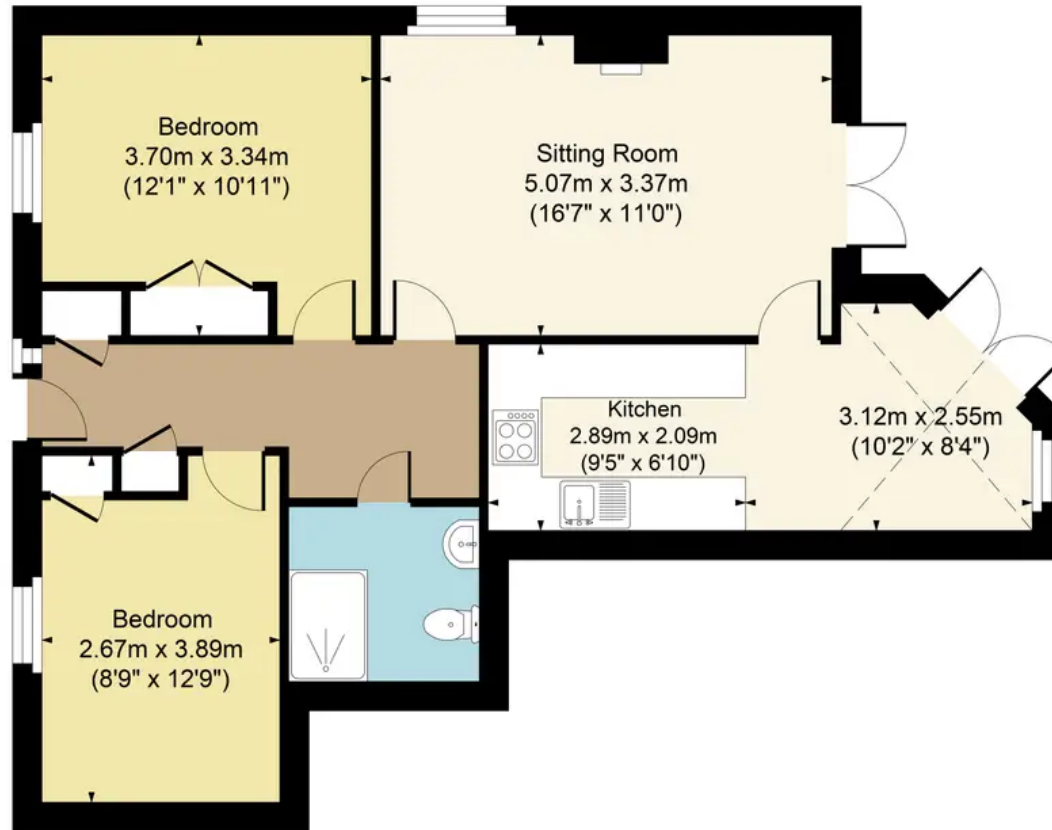
Tenure: We understand the property to be **Leasehold**. There are 963 years remaining (999 years from 03/05/1988). Potential purchasers should obtain confirmation of this from their solicitor prior to exchange of contracts.





**5 Bowling Green Court, Moreton GL56 0BX**

Total Approx. Gross Area:- 66.08 sq.m. 711 sq.ft.



FOR ILLUSTRATIVE PURPOSES ONLY-NOT TO SCALE

The position & size of doors, windows, appliances and other features are approximate only.

☐☐☐ Denotes restricted head height

www.dmlphotography.co.uk