



HARRISON
Sales &
Lettings
HARDIE

Varsity Close, Moreton-In-Marsh

Moreton-In-Marsh



A Four Bedroom Detached family home on the popular Bovis Development, The Avenue in Moreton-in-Marsh.

In brief this well presented and maintained property comprises:

A light and spacious entrance hall with cloakroom, spacious sitting room and understairs storage, and an open plan kitchen-dining room with access to the garden.

Upstairs there are four good sized bedrooms - three doubles and one single - an en-suite shower room to the principle bedroom, and the family bathroom.

Externally there is an enclosed garden mainly laid to lawn with a large patio. The garden can also be accessed via the side gate.

To the side of the house is a driveway with parking for two cars and access to the single garage.

Further features include a neutral decor, double glazing and Ultrafast Broadband is available nearby.

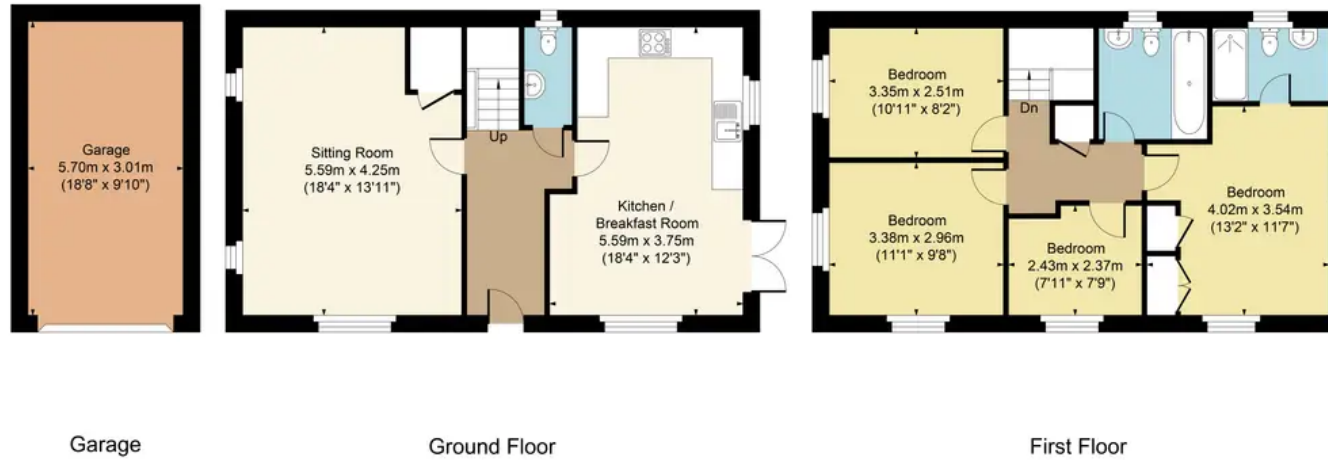
Tenure: We believe the property to be Freehold. Potential purchasers should obtain confirmation of this from their solicitor prior to exchange of contracts.

EPC Rating: B





5 Varsity Close, Moreton, GL56 0FA
Main House Approx. Gross Internal Area:- 108.56 sq.m. 1168 sq.ft.
Garage Approx. Gross Area:- 17.16 sq.m. 185 sq.ft.
Total Approx. Gross Area:- 125.72 sq.m. 1353 sq.ft.



FOR ILLUSTRATIVE PURPOSES ONLY-NOT TO SCALE
The position & size of doors, windows, appliances and other features are approximate only.
☐☐☐ Denotes restricted head height
www.dmlphotography.co.uk

Varsity Close, Moreton-In-Marsh

Moreton-In-Marsh