



HARRISON
Sales &
Lettings
HARDIEN

9 Bowling Green Court Hospital Road, Moreton-In-Marsh
Moreton-In-Marsh

Guide Price £195,000



Bowling Green Court is a development of 8 bungalows and 17 apartments, built around a picturesque courtyard, and surrounded by landscaped gardens.

Number 9 is a bright, spacious two bedroom first floor apartment located within this very friendly development for the over-55's, just a short walk from the town's extensive amenities, and enjoying beautiful countryside views from the rear.

The property is accessed via a communal hallway which has a newly-fitted stairlift. The apartment itself opens to a spacious hallway, with a storage cupboard, the airing cupboard, the kitchen and modern shower room. The sitting room has double doors opening to a small balcony which enjoys stunning views towards Batsford and the well maintained communal gardens below. The two bedrooms overlook the courtyard gardens to the front, with the generously-sized main bedroom having a built-in wardrobe.

The property has both night storage electric heating, and other electric heaters.

Tenure: We believe the property to be leasehold, with a length of 999 years starting in 1988. Potential purchasers should obtain confirmation of this from their solicitor prior to exchange of contracts.



Maintenance charge: approx. £307.00 pcm, payable quarterly, which briefly includes: an on-site resident manager during weekdays, maintenance of all communal grounds and external building fabric, buildings insurance, a guest suite available to friends and relatives for a small fee, and a contribution to the sinking fund for any future major expenditure.

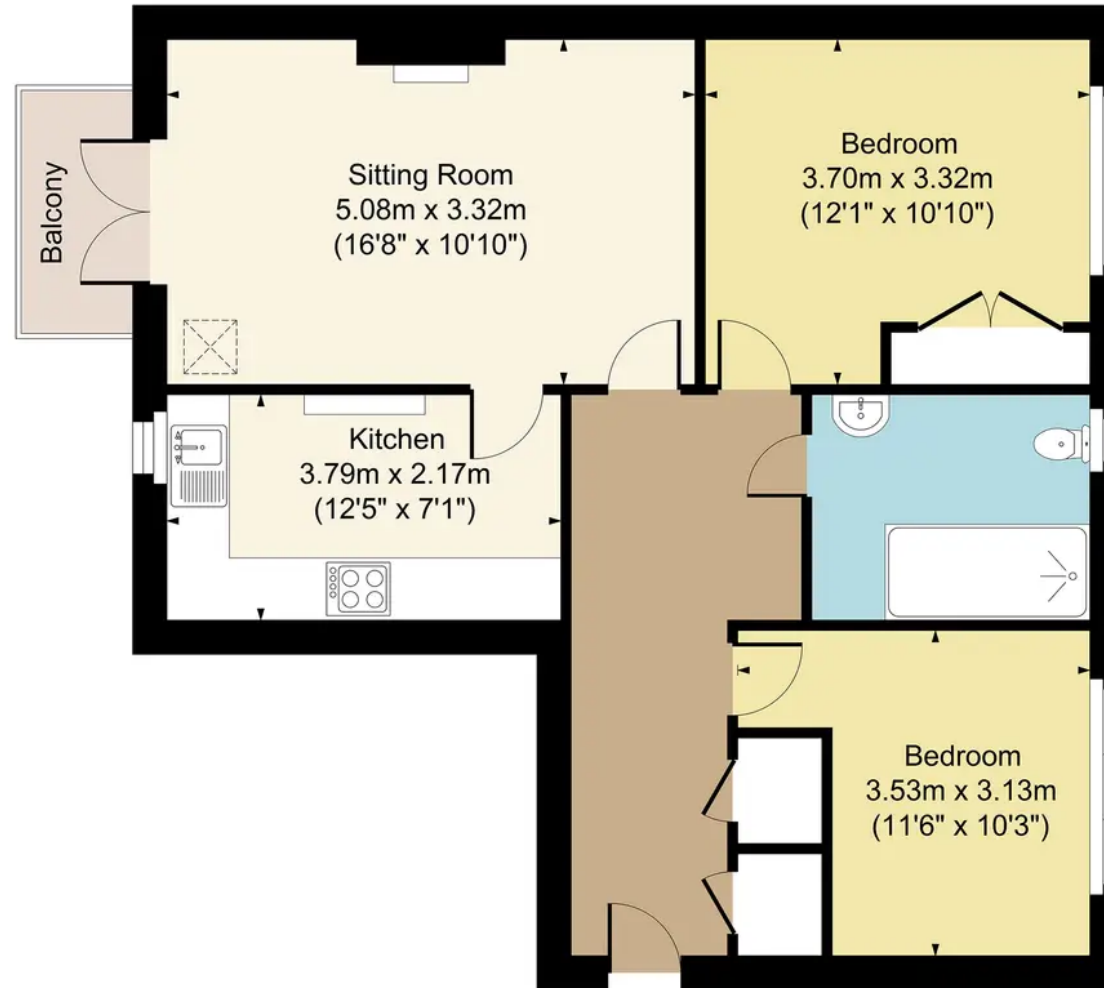
Parking: Defined off - street residents parking, with further general spaces for visitors.



9 Bowling Green Court, Moreton, GL56 0BX

Main House Approx. Gross Internal Area:- 65.76 sq.m. 708 sq.ft.

Total Approx. Gross Area:- 65.76 sq.m. 708 sq.ft.



FOR ILLUSTRATIVE PURPOSES ONLY-NOT TO SCALE

The position & size of doors, windows, appliances and other features are approximate only.

□ □ Denotes restricted head height

www.dmlphotography.co.uk