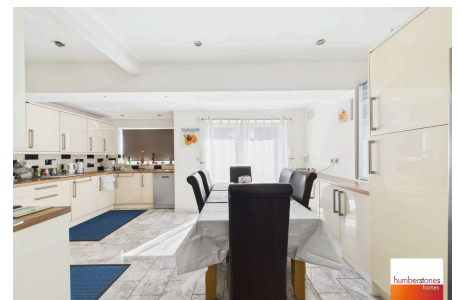
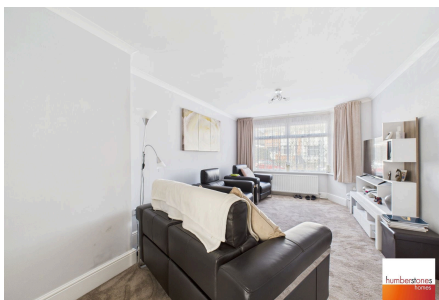


12 Upper Meadow Road,  
£285,000

3 2 1



Offered with NO UPWARD CHAIN, This is a GREAT SIZED, EXTENDED and MUCH IMPROVED 3 Bedroomed SEMI DETACHED FAMILY HOME in POPULAR LOCATION, with DOUBLE GARAGE at the rear. LARGE EXTENDED DINING KITCHEN, DOWNSTAIRS bathroom and FIRST FLOOR shower room. Explore this property with our 360 degree virtual tour.



## Key Features

- NO UPWARD CHAIN - SPACIOUS, EXTENDED AND WELL PRESENTED 3 BED SEMI
- EXPLORE THIS PROPERTY WITH OUR 360 DEGREE VIRTUAL TOUR
- DOWNSTAIRS BATHROOM AND FIRST FLOOR SHOWER ROOM
- 3 FIRST FLOOR BEDROOMS
- DOUBLE GLAZED AND GAS CENTRAL HEATING
- POPULAR QUINTON LOCATION
- DRIVE PROVIDING OFF ROAD PARKING AND DOUBLE GARAGE AT THE REAR
- SPACIOUS 20FT LOUNGE AND EXTENDED 16FT DINING KITCHEN
- PLEASANT LOW MAINTENANCE REAR GARDEN
- COUNCIL TAX BAND C. EPC RATING TBC.

