



FLAT 17, AROSA DRIVE, HARBORNE, BIRMINGHAM B17 0SB

£150,000





THE PROPERTY

THIS IS AN IDEAL PROPERTY FOR EITHER FIRST TIME BUYERS, OR BUY TO LET INVESTORS... MUCH IMPROVED AND REALLY SPACIOUS 2 BED TOP FLOOR FLAT IN SOUGHT AFTER HARBORNE LOCATION WITH LONG LEASE. Explore this property with our 360 degree virtual tour. There are a good range of shops and amenities nearby, whilst both Harborne and Selly Oak are easily accessible. Another huge benefit of this location is the CLOSE PROXIMITY to Q.E HOSPITAL. The flat is approached via a shared entrance/stairs and landing, leading to the following accommodation :- Entrance hall (with intercom receiver), useful built in storage cupboards and doors off to :- Spacious lounge having window to both front and side, fitted kitchen with a range of base and wall units, work surface area, and integrated oven/hob. 2 double bedrooms and bathroom having wash handbasin, bath and wc. The gardens are communal and there is a Garage in separate block at the rear. For Broadband and mobile coverage checker provided by Ofcom (the office of communications) see <https://www.ofcom.org.uk/phones-and-broadband/coverage-and-speeds/ofcom-checker/> Council Tax Band B. EPC rating C.

Council Tax Band B

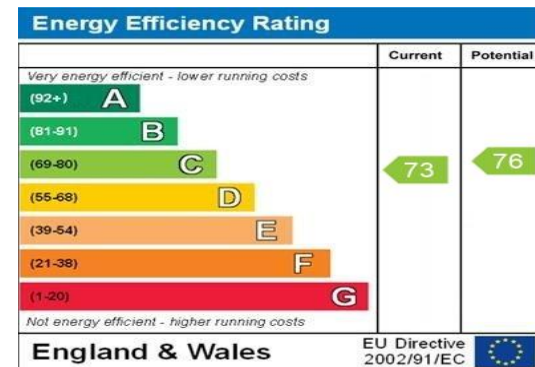
EPC Rating: C

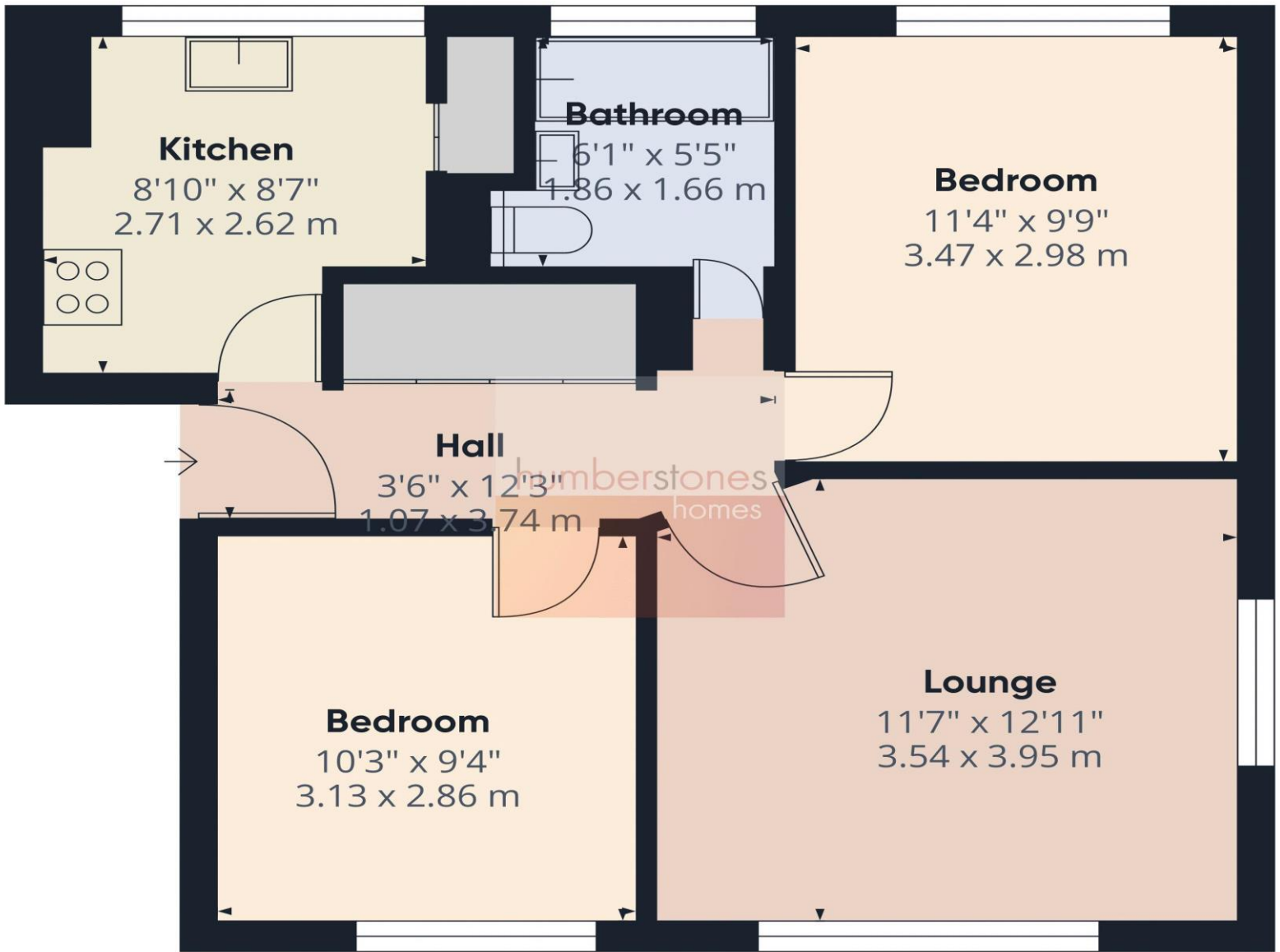
TITLE

The agents have checked HM land registry and the official copy of register of title shows the property as being Leasehold. We recommend buyers verify the status and satisfy themselves as to the tenure.

PROPERTY RELATED SERVICES

Humberstones Homes recommends certain products and services to buyers including mortgage advice, insurance, surveying and conveyancing. We may receive commission for such recommendations and referrals when they proceed to sign up and/or completion. These can vary up to a maximum of £240 per transaction.





Approximate total area^m

525.19 ft²
48.79 m²

(1) Excluding balconies and terraces

While every attempt has been made to ensure accuracy, all measurements are approximate, not to scale. This floor plan is for illustrative purposes only.

Calculations were based on RICS IPMS 3C standard. Please note that calculations were adjusted by a third party and therefore may not comply with RICS IPMS 3C.

GIRAFFE360

Consumer Protection Regulations 2008: These particulars have been prepared with care & approved by the vendors as correct (TBC) but are only intended as a guide to the property only. The measurements are approximate & usually the maximum size which may include recesses etc and must not rely on them for any purpose. The appearance of an item in any photograph does not mean that it forms part of the property or sale price. Always contact the appropriate Humberstones Homes branch for clarification. Humberstones Homes takes no responsibility for any planning or building regulations being granted or applied for & prospective buyers should always seek clarification from their solicitor or surveyor on these aspects.

Humberstones Homes, 787 Hagley Rd West, B32 1AJ - 0121 422 1188 – sales@humberstoneshomes.co.uk

