



Forming part of the highly desirable Lakeside Place development in Riverhead, this well proportioned two bedroom end of terrace home comes complete with two allocated parking spaces. With the Tesco superstore situated conveniently on the development, the property also provides easy access to the sought after Riverhead and Amherst Schools as well as providing ease of access to the wide array of all shopping, social and leisure facilities available in central Sevenoaks, including the mainline rail station with its fast and frequent links to London in less than thirty minutes.

The accommodation comprises entrance hall with ground floor wc, sitting room with direct access to the conservatory which provides entry to the private and well maintained rear garden, fitted kitchen, two first floor bedrooms and a family bathroom. The property also benefits from a easily maintainable front lawn as laid. Your early viewing comes highly recommended in order to fully appreciate all this comprehensive modern home has to offer.

## 8 Aisher Way

Riverhead, Kent, TN13 2QS Freehold



Price £425,000

## **GROUND FLOOR**

### **Entrance Hall**

Tiled floor as laid, double glazed front door, radiator, storage/utility cupboard with integrated slimline dishwasher which is to remain, access to cloakroom & kitchen.

### **Cloakroom**

Tiled floor as laid, part tiled walls, wash hand basin, WC.

### **Kitchen**

Laminate flooring as laid, double glazed window to front aspect, shaker style cupboards/drawers, timber worktops, sink and drainer with mixer tap, space for fridge/freezer & washing machine, four burner ceramic hob with tiled splashback behind and electric fan oven beneath.

### **Living Room**

Laminate flooring as laid, two radiators, upvc french doors to rear aspect leading to conservatory.

### **Conservatory**

Laminate flooring as laid, surrounding upvc and double glazed panelling throughout, provides entry to rear garden.

## **FIRST FLOOR**

### **Landing**

Carpet as laid, access to loft which we are advised is insulated and fully boarded.

### **Master Bedroom**

Laminate flooring as laid, two double glazed windows to front aspect, radiator, integrated wardrobes.

### **Bedroom**

Laminate flooring as laid, radiator, double glazed window to rear aspect.

### **Bathroom**

Vinyl flooring as laid, opaque double glazed window to side aspect, radiator, WC, panelled bath with shower & screen plus surrounding part tiled wall, wash hand basin with surrounding vanity unit and mirror cabinet above.

## **EXTERNALLY**

The property not only comprises a front and rear gardens with lawns as laid but also benefits from two allocated parking spaces located very close to the property itself.

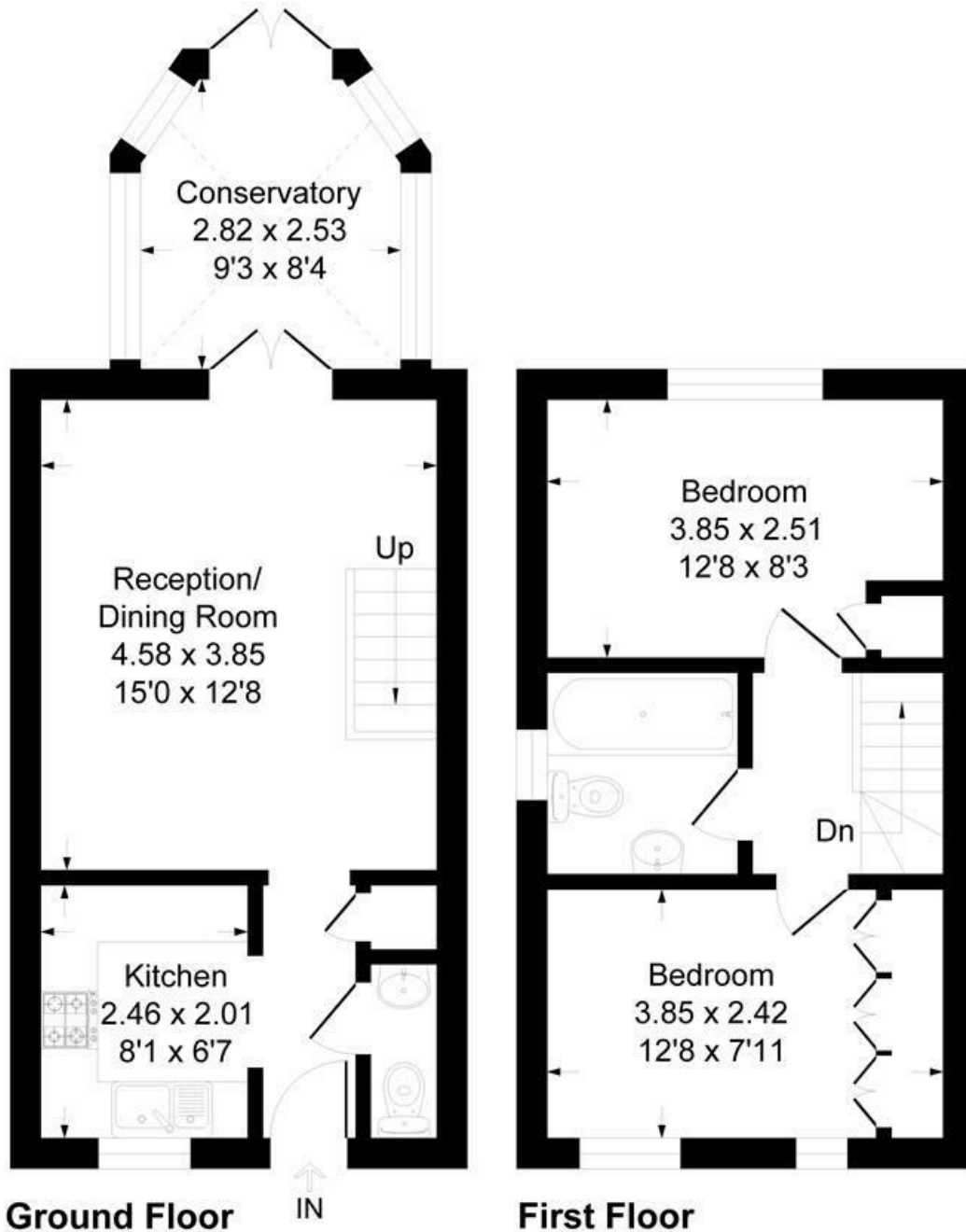
AWAITING EPC





# Aisher Way, TN13

Approximate Gross Internal Area 62.7 sq m / 676 sq ft



This plan is for layout guidance only. Not drawn to scale unless stated. Windows and door openings are approximate. Whilst every care is taken in the preparation of this plan, please check all dimensions, shapes and compass bearings before making any decisions reliant upon them.

Produced By Planpix

[www.kings-estate-agents.co.uk](http://www.kings-estate-agents.co.uk)

These particulars, whilst believed to be accurate are set out as a general outline only for guidance and do not constitute any part of an offer or contract. Intending purchasers should not rely on them as statements of representation of fact, but must satisfy themselves by inspection or otherwise as to their accuracy. No person in the firms employment has the authority to make or give any representation or warranty in respect of the property.

4 Station Parade, London Road, Sevenoaks, Kent,  
TN13 1DL  
T: 01732 740747

[sevenoaks@kings-estate-agents.co.uk](mailto:sevenoaks@kings-estate-agents.co.uk)

[kings-estate-agents.co.uk](http://kings-estate-agents.co.uk)

