



22 Roman Court Fairfield Road

Borough Green, TN15 8NY Leasehold



Asking Price £179,950

A well presented modern one double bedroom first floor apartment for the over 55s with in-house warden and communal lounge. Conveniently located in the heart of the village of Borough Green close to local amenities. This apartment has been very well presented throughout with updated kitchen and a lovely modern shower room. It has generous storage and enjoys south-westerly aspects with distant views. The property is double glazed and has electric night storage heating. This development has a live-in manager and helpline pull chords throughout the flat.

Overview

- First floor apartment
- For over 55s
- Located in heart of village
- Lounge/dining room
- Double bedroom
- Bathroom
- Communal gardens, parking and lounge
- Warden
- Lift
- Chain free

Property Description

This contemporary and spacious one-bedroom property is thoughtfully designed for those aged 55 and over, offering a comfortable and welcoming living environment. Upon entering, you'll find an inviting communal entrance that sets the tone for the warmth and community spirit within. The property is laid out with a well-planned entrance hall, leading to a bright and airy living room, a modern kitchen perfect for home-cooking, a generously sized bedroom, and a bathroom designed with convenience and ease in mind. Every corner of the home is carefully crafted to ensure ample space, functionality, and modern amenities, providing the ideal blend of comfort and practicality.



Location

Nestled in the charming village of Borough Green, Kent, this property offers more than just a home. Borough Green provides a wonderful blend of peaceful countryside living with convenient access to local amenities. You'll find a variety of shops, cafes, and eateries within easy reach, along with excellent transport links to nearby towns and cities. The area also boasts beautiful green spaces, making it an ideal place for relaxing strolls or enjoying nature. With its welcoming community and convenient location, Borough Green is the perfect setting for those looking for a tranquil yet well-connected lifestyle.

Viewing Arrangements

Viewings are strictly by appointment only via Kings.

Directions

From our Borough Green office, head east towards the high street. Continue round to the left passing the train station and Sainsbury's on your right. Turn left onto Fairfield Road. Roman court will be on your left. what3words location finder: ///rested.gain.sleepy

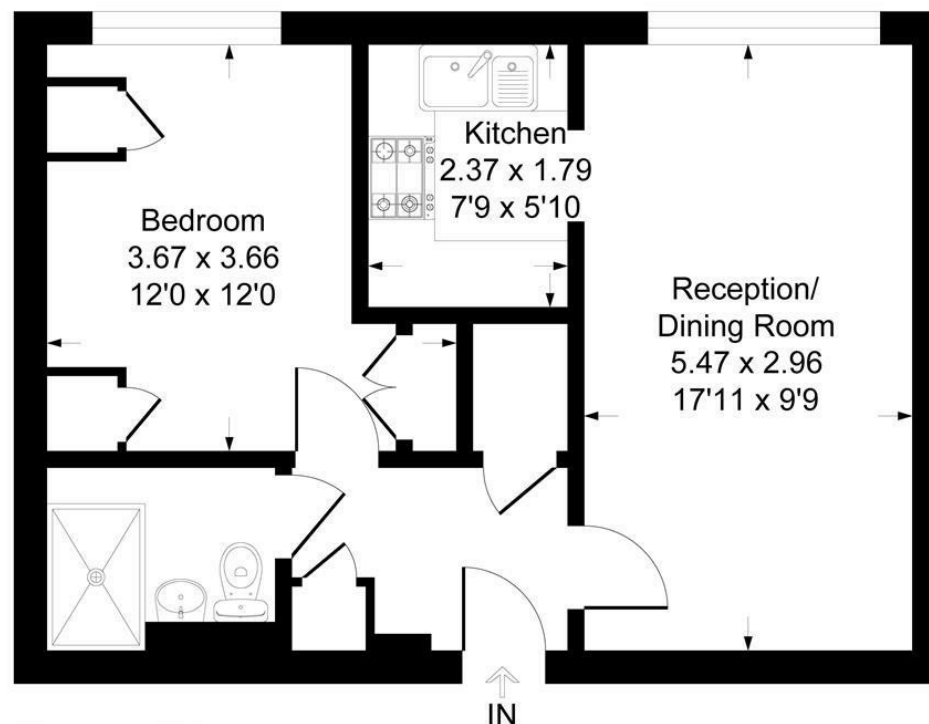
Property Information

Mains water & sewerage. No gas, electric room heaters. Tonbridge and Malling Council band C. EPC rated C.



Roman Court, Fairfield Road, TN15

Approximate Gross Internal Area 42.7 sq m / 460 sq ft



First Floor

This plan is for layout guidance only. Not drawn to scale unless stated. Windows and door openings are approximate. Whilst every care is taken in the preparation of this plan, please check all dimensions, shapes and compass bearings before making any decisions reliant upon them.

Produced By Planpix

Kings gives notice that: 1 These particulars do not constitute an offer or contract or part of one and must not be relied upon as statements or representations of fact; and we have no authority to make or give any representation or warranties in relation to the property. 2 These particulars have been prepared in good faith and to be used as a general guide. They are not exhaustive and include information provided to us by other parties including the seller, of which may not have been verified. 3 The measurements, areas, distances, orientation and floor plans are approximate and should not be relied on. The text, floor plans and photographs are only for guidance and are not necessarily comprehensive. The photographs may not be current and certain aspects may have changed since the photographs were taken. 4 It should not be assumed that the property has all necessary planning, building regulation or other consents. 5 We have not tested any services, appliances or fittings. 6 Purchasers should satisfy themselves by inspection, searches, enquiries, surveys, and professional advice about all relevant aspects of the property

51 Western Road, Borough Green, Kent, TN15 8AN
T: 01732 885585

boroughgreen@kings-estate-agents.co.uk

kings-estate-agents.co.uk

