



15 Platt Mill Close

St Mary's Platt, Kent, TN15 8LR Freehold



Price Range £525,000 to
£550,000

Guide price £525,000 to £550,000 - A well-presented four bedroom modern family home with sitting room, kitchen/dining room, family bathroom and en-suite shower room, cloakroom, garage, driveway, front garden and south-westerly facing rear garden; located in the sought after village of St Mary's Platt located between Stone House and King Georges' playing fields.

Overview

- Modern semi-detached house
- Cloakroom, sitting room
- Kitchen/dining room
- Master bedroom & en-suite
- Three further bedrooms
- Family bathroom
- Front and rear gardens
- Driveway, garage
- Council tax band F

Property summary

Ground floor: entrance hall with cupboard, staircase to first floor with cupboard under; sitting room with oak wood flooring and double doors to the garden and kitchen/dining room; modern open-plan kitchen/dining room with wall/base units, sink with drainer, granite worktops, space for range style cooker with extractor above, space for American style fridge/freezer, spaces for washing machine and dishwasher, tiled floor and door to side; cloakroom with WC and washbasin.

First floor: landing with access to loft; master bedroom with built-in wardrobes and en-suite shower room with shower cubicle, washbasin and WC; bedroom two with built-in wardrobes, bedroom three with built-in wardrobe, bedroom four and family bathroom with bath with shower above, vanity washbasin and WC.

The property also benefits from: gas central heating, double glazed windows, front garden with flower beds and blocked paved pathway to the entrance door; garage with up-and-over door and driveway to the rear; and a pleasant south-westerly facing rear garden measuring approximately 28ft x 21'6ft which is mainly laid to lawn, shrubs, tree and rear access.



Location

St Mary's Platt is a pleasant sought-after village with a popular primary school, pub, church and two recreation grounds.

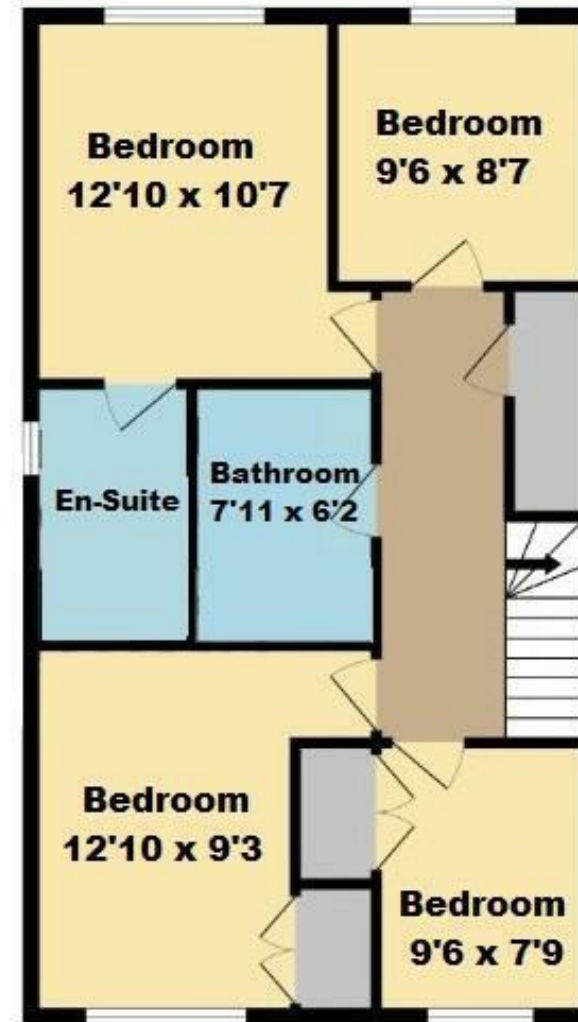
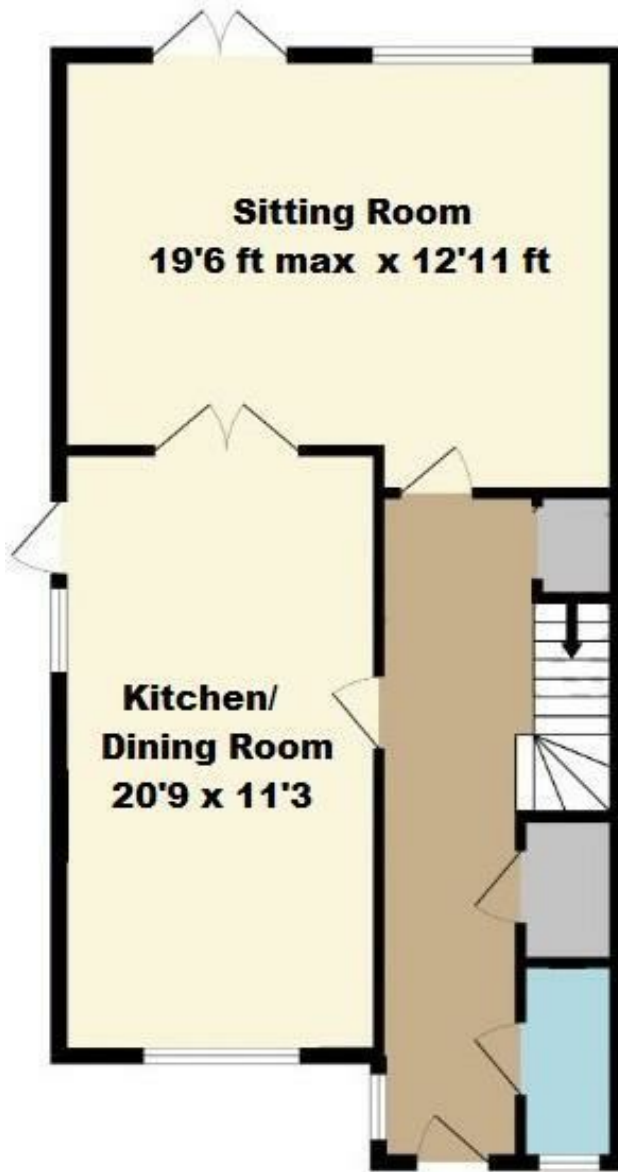
Borough Green with its variety of shops, restaurants, take-aways, pub, bar, churches, dentists, doctors, popular primary school, Reynolds Retreat (Health Club, Country Club and Spa) and mainline station (with services to London Bridge and Maidstone) is approximately 0.7 miles away.

Sevenoaks town centre with its comprehensive range of

educational, recreational and shopping facilities, and mainline station (with fast services to London) is approximately 7 miles away.

Access to both the M20 and the M26 can both be found within 2.2 miles.





Kings gives notice that: 1 These particulars do not constitute an offer or contract or part of one and must not be relied upon as statements or representations of fact; and we have no authority to make or give any representation or warranties in relation to the property. 2 These particulars have been prepared in good faith and to be used as a general guide. They are not exhaustive and include information provided to us by other parties including the seller, of which may not have been verified. 3 The measurements, areas, distances, orientation and floor plans are approximate and should not be relied on. The text, floor plans and photographs are only for guidance and are not necessarily comprehensive. The photographs may not be current and certain aspects may have changed since the photographs were taken. 4 It should not be assumed that the property has all necessary planning, building regulation or other consents. 5 We have not tested any services, appliances or fittings. 6 Purchasers should satisfy themselves by inspection, searches, enquiries, surveys, and professional advice about all relevant aspects of the property

51 Western Road, Borough Green, Kent, TN15 8AN
T: 01732 885585

boroughgreen@kings-estate-agents.co.uk

kings-estate-agents.co.uk

