



2 Hamptons Road

Hadlow, TN11 9RE Freehold



Price Guide £650,000

Period cottage with countryside views located in a beautiful rural setting. This charming property has two bedrooms, sitting room with open fireplace, dining room with stove, kitchen, stunning bathroom, driveway, garage and gardens to three sides. No onward chain.

Overview

- Two Bedroom character semi-detached cottage
- Sitting room with fireplace
- Dining room with stove
- Kitchen, cloakroom with utility area
- Stunning upstairs bathroom
- Gardens to three sides
- Driveway and garage
- Beautiful rural setting with lovely views
- No onward chain
- Council tax band D

Property Description

Looking for a more relaxed, rural lifestyle? This two-bedroom semi-detached property could be just what you're after. Offered chain-free, it enjoys beautiful countryside views, providing a peaceful setting away from the busyness of everyday life. If you're looking to embrace a slower pace, this home offers a quiet, comfortable space to enjoy the natural surroundings.



Location

Situated in the desirable village of Shipbourne, which boasts the well-known Chaser Inn and a weekly award-winning Farmers' Market. The village also offers a church, a primary school, and a common area. For comprehensive shopping, Sevenoaks and Tonbridge are nearby, with Tunbridge Wells (9 miles) and Bluewater also within reach. Mainline rail services are available from Hildenborough and Tonbridge to London Bridge, Charing Cross, and Cannon Street. Additionally, Borough Green and Wrotham provide services to London Victoria and Charing Cross. Local primary schools include Shipbourne, Plaxtol, Kings Hill, Mereworth, Hadlow, Ightham, and Borough Green. For secondary education, options include Judd Boys Grammar, Weald of Kent Girls Grammar, Tonbridge Girls Grammar, Hillview, Leigh

Academy, and High Christie Schools in Tonbridge. In Sevenoaks, there are Knole Academy, Trinity, Tunbridge Wells Boys, and Weald of Kent Girls Grammar Schools, with additional choices in Tunbridge Wells. Private schooling options include Somerhill Preparatory Schools, Hilden Grange, and Hilden Oaks Preparatory Schools in Tonbridge, along with Tonbridge, Sevenoaks, Sackville, and Walthamstow Hall Secondary Schools. In Sevenoaks, there are also The Granville, Walthamstow Hall, Solefields, and New Beacon Preparatory Schools. Additionally, St Michaels and Russell House Preparatory Schools in Otford and Radnor House in Sundridge are available. For leisure, Nizels Golf and Fitness Centre in Hildenborough and Poult Wood Golf Club in Tonbridge are nearby. Tonbridge also offers both indoor and outdoor swimming pools, the Angel Leisure Centre, and

a variety of sporting clubs, including football, baseball, swimming, and sailing.

Viewing Arrangements

Viewings are strictly by appointment only via Kings.

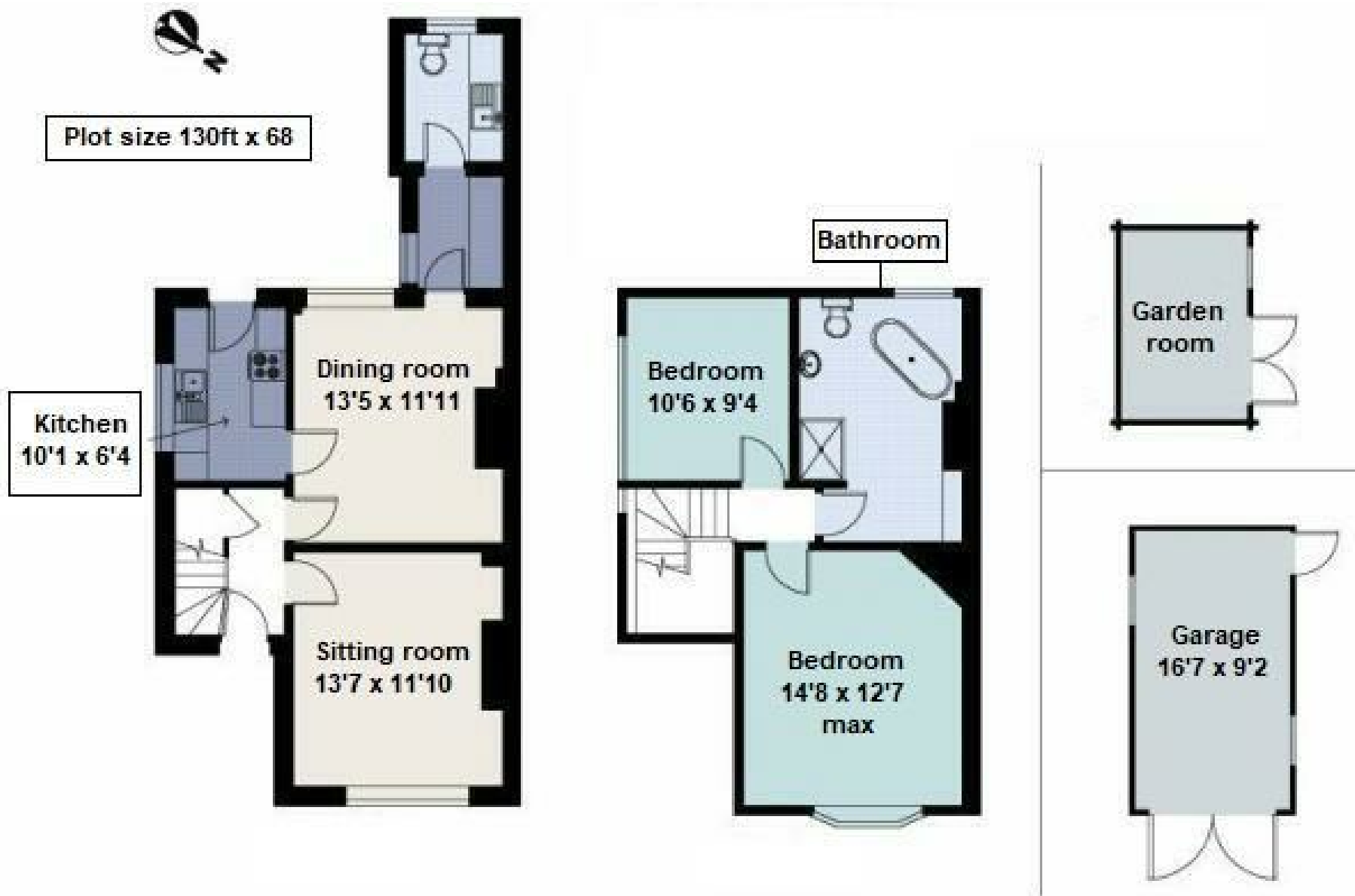
Directions

Take Wye Rd to Wrotham Rd/A227, continue on A227 to Plaxtol Ln, follow Plaxtol Ln and School Ln to Hamptons Rd, turn left onto Hamptons Rd, destination will be on the right. what3words: ///finely.tricks.before

Property Information

The property is freehold and built of standard construction, oil fired central heating, connected to electricity, mains water and connected to a cesspit and shared with the adjoining semi. Council is Tonbridge & Malling. EPC E. Council tax D.





Kings gives notice that: 1 These particulars do not constitute an offer or contract or part of one and must not be relied upon as statements or representations of fact; and we have no authority to make or give any representation or warranties in relation to the property. 2 These particulars have been prepared in good faith and to be used as a general guide. They are not exhaustive and include information provided to us by other parties including the seller, of which may not have been verified. 3 The measurements, areas, distances, orientation and floor plans are approximate and should not be relied on. The text, floor plans and photographs are only for guidance and are not necessarily comprehensive. The photographs may not be current and certain aspects may have changed since the photographs were taken. 4 It should not be assumed that the property has all necessary planning, building regulation or other consents. 5 We have not tested any services, appliances or fittings. 6 Purchasers should satisfy themselves by inspection, searches, enquiries, surveys, and professional advice about all relevant aspects of the property

51 Western Road, Borough Green, Kent, TN15 8AN
T: 01732 885585

boroughgreen@kings-estate-agents.co.uk

kings-estate-agents.co.uk

