



## 2 Hamptons Road

Hadlow, Tonbridge, TN11 9RE Freehold



Price Guide £650,000

**Period cottage with countryside views located in a beautiful rural setting. This charming property has two bedrooms, sitting room with open fireplace, dining room with stove, kitchen, stunning bathroom, driveway, garage and gardens to three sides. No onward chain.**

### **Overview**

- Two Bedroom character semi-detached cottage
- Sitting room with fireplace
- Dining room with stove
- Kitchen, cloakroom with utility area
- Stunning upstairs bathroom
- Gardens to three sides
- Driveway and garage
- Beautiful rural setting with lovely views
- No onward chain
- Council tax band D



### **Description**

#### **Ground floor**

##### **Entrance hall**

Staircase to first floor with cupboard under.

##### **Sitting room**

13'7 x 11'10

Open fireplace with surround, picture rail and window with views to the front.

##### **Dining room**

13'5 x 11'11

Stove, drying rack, cupboard, window to rear with views over the garden.

##### **Kitchen**

10'1 x 6'4

Wall and base units, worktops, electric cooker point, fridge/freezer, dishwasher, window and door to garden.

##### **Inner lobby**

Worktop and window to side

##### **Cloakroom with utilities**

WC, base units, sink, space and plumbing for washing machine.



**First floor**

**Landing**

Window to side

**Bedroom one**

14'8 x 12'7

Feature fireplace and stunning views from the window over countryside.

**Bedroom two**

10'6 x 9'4

Window to side.

**Bathroom**

Free standing bath, separate shower, wash basin, WC, feature fireplace, loft access and rural views from the window.

**Externally**

**Front garden**

Lawn, driveway, hedges, tree, 16'2 x 9'2 detached garage, side access.

**Rear garden**

Mainly laid to lawn hedges, summer house and oil tank.

**Location**

Located in a semi-rural position between Hadlow and Plaxtol approximately 1.7 miles from Hadlow village with farm shop, coffee shop chemist, newsagent, local shop, pharmacy, dentist and 1.8 miles from Plaxtol with pub and village store.

For a more comprehensive range of shopping and amenities

there are large shopping facilities in Tonbridge, Sevenoaks and Tunbridge Wells.

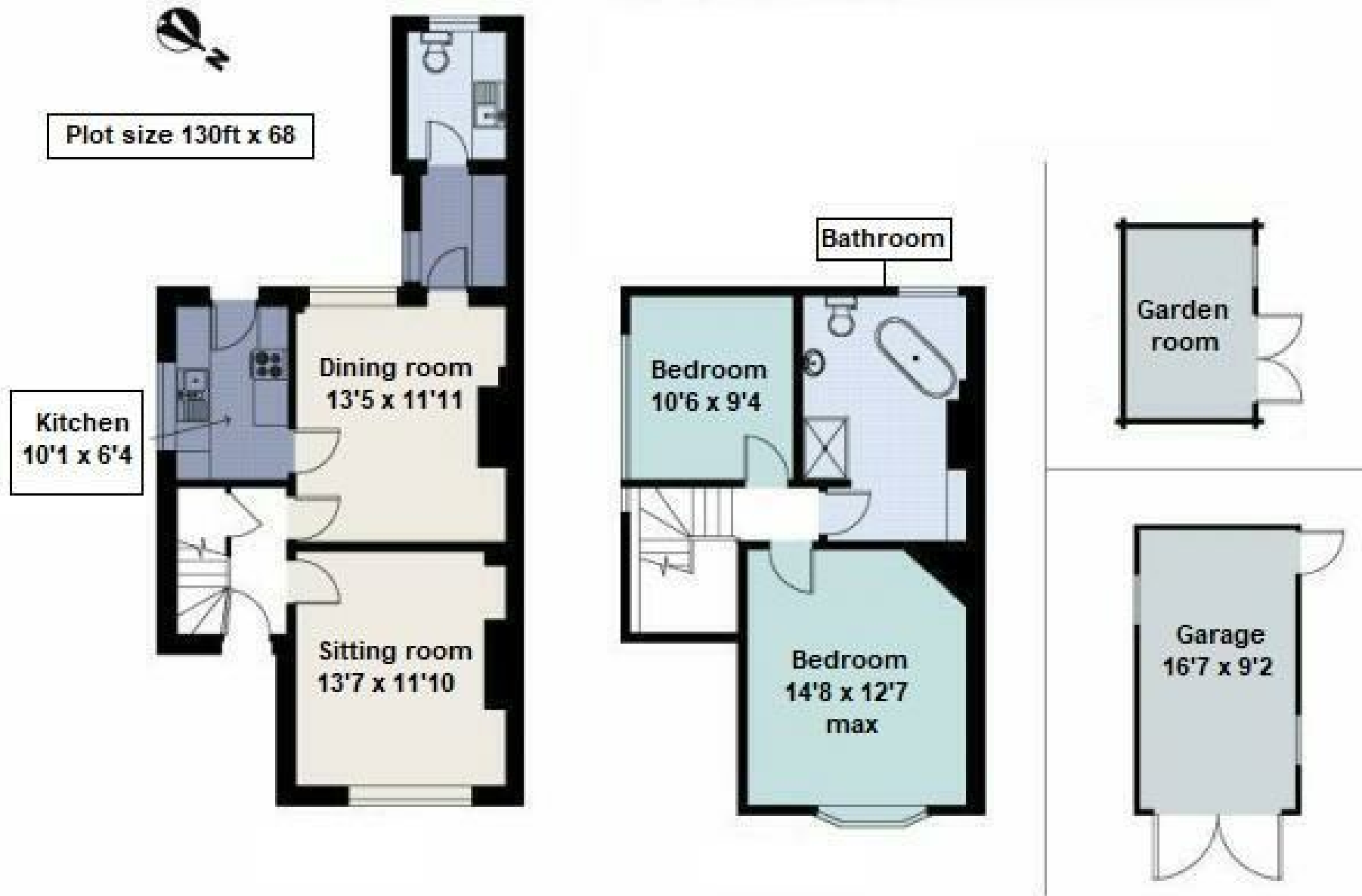
Mainline Rail Services: Borough Green/Wrotham with fast trains to London Bridge in 37 minutes and Tonbridge mainline station with further trains to London Bridge/Waterloo East/Cannon Street/Charing Cross.

There are primary/secondary and grammar schools in: Hadlow, Shipbourne, Tonbridge and Tunbridge Wells as well as local private Schools.

**Agents notes**

The property is freehold and built of standard construction, oil fired central heating, connected to electricity, mains water and connected to a sepsit and shared with the adjoining semi.





Kings gives notice that: 1 These particulars do not constitute an offer or contract or part of one and must not be relied upon as statements or representations of fact; and we have no authority to make or give any representation or warranties in relation to the property. 2 These particulars have been prepared in good faith and to be used as a general guide. They are not exhaustive and include information provided to us by other parties including the seller, of which may not have been verified. 3 The measurements, areas, distances, orientation and floor plans are approximate and should not be relied on. The text, floor plans and photographs are only for guidance and are not necessarily comprehensive. The photographs may not be current and certain aspects may have changed since the photographs were taken. 4 It should not be assumed that the property has all necessary planning, building regulation or other consents. 5 We have not tested any services, appliances or fittings. 6 Purchasers should satisfy themselves by inspection, searches, enquiries, surveys, and professional advice about all relevant aspects of the property

51 Western Road, Borough Green, Kent, TN15 8AN  
T: 01732 885585

[boroughgreen@kings-estate-agents.co.uk](mailto:boroughgreen@kings-estate-agents.co.uk)

[kings-estate-agents.co.uk](http://kings-estate-agents.co.uk)

