



Hedgerows, Little Copse

Astrove, Tring, Hertfordshire HP23 4PN



Beautiful brand new home, in a gated development.

An enchanting hamlet of five individually designed detached homes within an exclusive gated development nestled on the edge of The Chilterns close to the fashionable leafy market town of Tring.

All five captivating homes creatively combine impressive living and outdoor spaces with a range of bedroom options to cater to varying family requirements. So, whether you have a preference towards a fabulous open-plan family kitchen/dining space, exquisite master suite, top-floor gym or home theatre or perhaps a home office and ground floor guest suite, there are options aplenty at Little Copse.

Resplendent facing open countryside, this 5-bed elegant double fronted house gets top billing by a whisker due to the exceptional plot, 5 bedrooms and accommodation spanning 3 floors, ample parking and double garage.

Guide price: £1,225,000
Tenure: Freehold



SPECIFICATION

Innovative Green Smart Energy technology ensures greater control of energy costs. Including integrated solar panels, EDDI diverters, and Zappi EV chargers.

Air Source heat pump systems combined with underfloor heating and low-temperature radiators require less energy to heat these super-insulated homes.

Intelligent 'Eddi' solar power diverters, heating water using self-generated green energy.

Our combined use of green technologies is designed to achieve an A-Rated Energy Performance rating (EPC).

Fully wired for full-fibre broadband and satellite TV (subject to subscription).

NACOSS approved Security Intruder Alarms, plus video doorbells and PIR external lighting.

Superbly designed contemporary fitted kitchens with crafted quartz stonework surfaces, feature islands & high-quality appliances.

Luxurious Porcelain tiled floors in hallways, cloakrooms, kitchens, and utility rooms are complimented by the sophisticated tones of LVP flooring creating a timeless, homely statement to any interior.

Plush-fitted carpets add a cosy touch to all bedrooms.

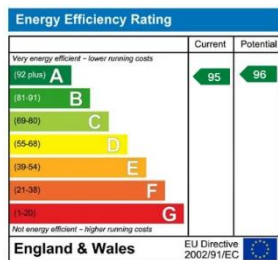
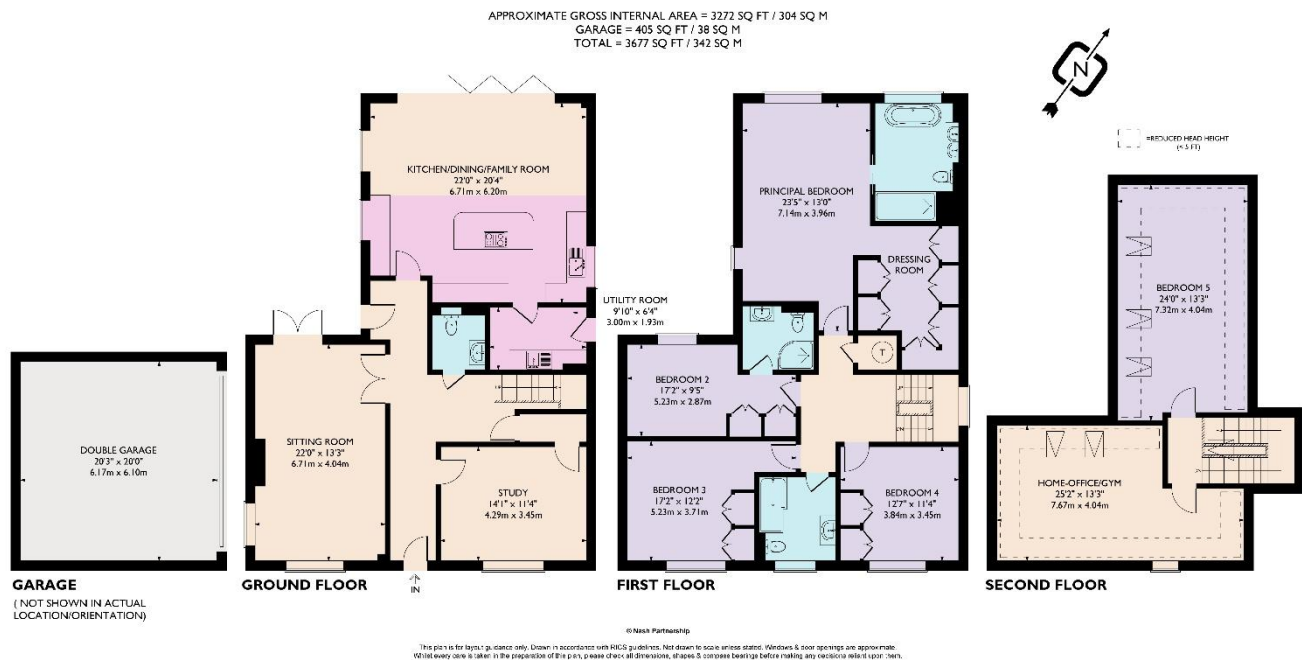
Inspirationally designed bath and shower rooms are enhanced by carefully selected floor and wall finishes.

Classic and contemporary, and coordinated fitted wardrobes to most bedrooms.

2-year aftercare service, insurance backed by a 10-year LABC Buildings Warranty.

Gardens include the classy finesse of porcelain tiled patio areas and garden pathways surrounded by newly laid lawns, and landscaping.





Council Tax Band: TBC

nashpartnership.co.uk

Tring Office | 01442 820420
 35 High Street, Tring, Hertfordshire HP23 5AA

These particulars do not form an offer or contract, nor part of one. You should not rely on statements by Nash Property Management Ltd in the particulars or by word of mouth or in writing ("information") as being factually accurate about the property, its condition or its value. Neither Nash Property Management Ltd nor any joint agent has any authority to make any representations about the property, and accordingly any information given is entirely without responsibility on the part of the agents, seller(s) or lessor(s). Photographs, property videos and virtual tours show only certain parts of the property as they appeared at the time they were taken. Floorplans, areas, measurements and distances given are approximate only. The text, images and plans included within these particulars are protected by Copyright and must not be reproduced without our consent. Any reference to alterations to, or use of, any part of the property does not mean that any necessary planning, building regulations or other consent has been obtained. A buyer or lessee must find out by inspection or in other ways that these matters have been properly dealt with and that all information is correct. Nash Partnership is a trading name of Nash Property Management Ltd, a private limited company registered in England & Wales with number 4876274. Registered Office: 152 High Street, Berkhamsted, Hertfordshire HP4 3AT.