

GREEN &
CO



5 Yates Meadow
Faringdon Oxfordshire

5 Yates Meadow Faringdon Oxfordshire

Description

JUST RELEASED FOR SALE! Please call the Green & Co team to register your interest or to arrange a viewing.

The Witney

5 Yates Meadow is a handsome four-bedroom home with bay window to the front, south facing rear garden and integrated garage has just been released for sale! On the ground floor the entrance hall leads off to an attractive living room, a kitchen dining room and utility room with access directly out to the rear garden. Upstairs there are four bedrooms with en-suite and wardrobes to the master. A separate family bathroom off the landing. Anticipated completion Summer 2022. CGI images and photography of the showhome have been use on this listing for illustration whilst this property is still under construction.

The Development

Bellmount View - is a collection of 2,3 and 4 bedroom new homes located in an enviable, elevated position fronting onto magnificent views of open countryside on the edge of Oxfordshire's Market Town of Faringdon. Neighbouring both the Cotswolds and the North Wessex Downs the opportunities from Bellmount View to explore and enjoy the countryside are endless. On a practical level the town has an array of excellent amenities and is almost midway between Oxford and Swindon which gives that perfect balance of town and country living.

The Bewley Bond Scheme

The Bewley Bond, is a unique scheme to Bewley Homes which enables you to secure and reserve your new Bewley home even if you currently have a property to sell! Please get in touch to find out how the Bewley Bond could help you plan a stress free move to Bellmount View. (Subject to Terms and Conditions)



The Development Layout



GREEN & CO

www.greenand.co.uk

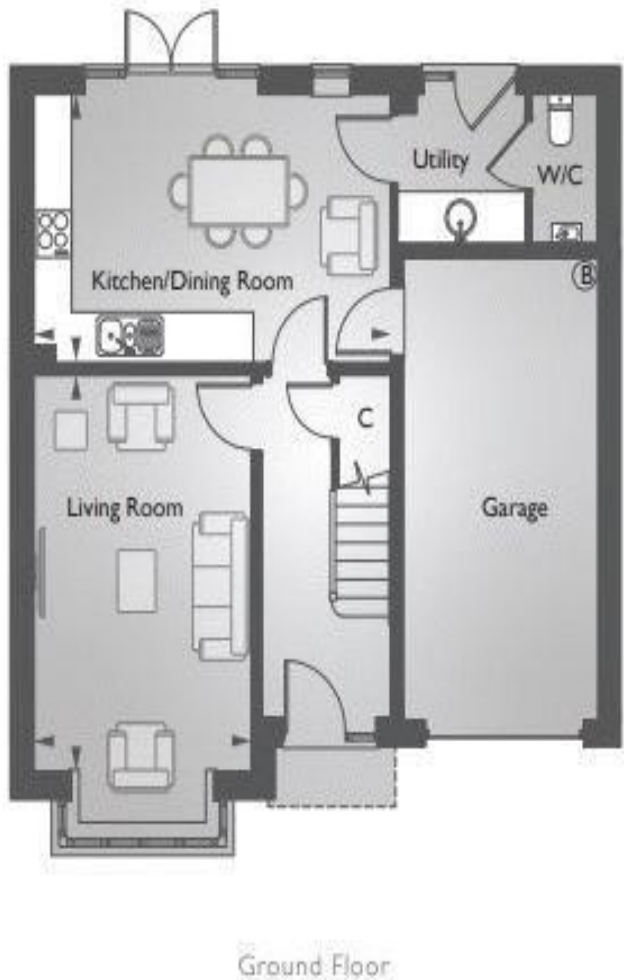
Local Amenities

Faringdon has excellent local amenities which include superb schools, medical centre, sport centre, a choice of superstores such as Waitrose, Tesco's, Aldi and an array of independent shops and cafes around the Market Place.

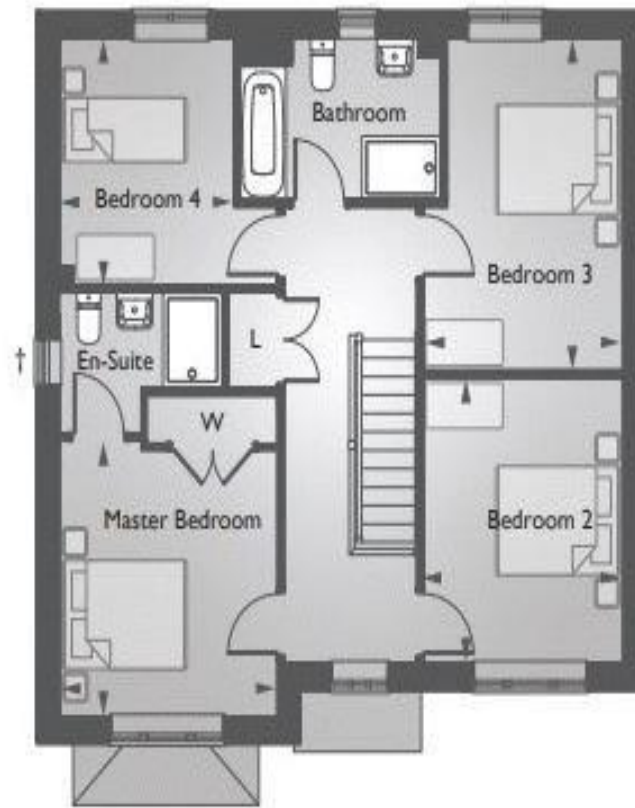
The Developer

Bewley Homes - Green & Company are delighted to be appointed as selling agent for Hampshire based Bewley Homes. Over recent years we have worked with Bewley on several projects locally and have witnessed first hand their excellent level of customer satisfaction.





Ground Floor



First Floor

Directions

Sat Nav - SN7 7EG Bellmount View is located on the A4019, Highworth Road. Please follow the Bellmount View AA signs to assist your approach.

Notes

Please click on the Property Brochure link below for a printable property brochure. CGI images have been used on this listing. Internal images on this listing are of a Bewley show home as an example of the finish and specification. The countryside images on this

33 Market Place, Wantage, Oxon, OX12 8AL t: 01235 763562 e: sales@greenand.co.uk

Buyers must check the availability and/or any particular aspect of the property that could be of importance to them before booking an appointment to view or embarking on any journey to see it. Floor plans are provided entirely for illustrative purposes only and are NOT to scale. These particulars are copyright and are not to be reproduced in anyway without our written consent.

CONSUMER PROTECTION REGULATIONS AND UNFAIR TRADING REGULATIONS 2008

Green & Co has not tested any apparatus, equipment, fixtures and fittings or services and so cannot verify that they are in working order or fit for the purpose. References to the Tenure of a Property are based on information supplied by the Seller. We have not had sight of the title documents. Buyers should seek professional advice. Items shown in photographs are NOT included unless specifically mentioned within the sales particulars. Unless stated otherwise fitted carpets, curtains, window dressings, fixtures and fittings may not be included. However, they may be available by separate negotiation.

DATA PROTECTION ACT 2018

All handling of your personal data is done in compliance with our privacy policy and the General Data Protection Regulations (EU) 2016/679 ("Data Protection Legislation"). For full details of our privacy policy visit www.greenand.co.uk/primary-policy-and-notice.



