

GREEN &
CO

£225,000

6 Beckett House Wallingford Street
Wantage Oxfordshire OX12 8AZ



GREEN & CO

Description

Beautifully presented two double bedroom first floor apartment set in this ever popular and discreet development enclosed by attractive communal gardens only a short walk from Wantage Market Place and Waitrose. Features include spacious sitting room with balcony, refitted kitchen and bathroom with allocated parking space. The property further benefits from double glazing, individual entrance door and is added for sale with no onward chain.

Location

One-time winner of a Great British High Street award and highlighted by The Sunday Times as an often overlooked part of Oxfordshire which will become a boom town, Wantage is superbly situated in the Vale of the White Horse for all the main travel links, with the A338 providing easy access to the A34, M40, M4, plus the rail links in Oxford, Didcot, and Swindon. A picturesque Market Town, with historic ties as far back as Alfred the Great, Wantage has many high street and independent retailers with a plethora of bars, restaurants, and cafes in a thriving community. King Alfred's Academy provides secondary education and is now part of the Vale Academy Trust, working with good primary schools locally, including Charlton and Wantage CofE with Ofsted rated outstanding Stockham Primary School and Wantage Primary Academy completing the educational provision within the Town. With easy access to the beautiful surrounding countryside including the ancient Ridgeway and White Horse Hill, Wantage fuses the semi-urban and rural in one sublime package.





What3Words

w3w.co/crossings.beep.untruth.

Tenure

Leasehold.

Estate Service Charge

£1293 per annum as of July 2023.

Ground Rent

£40 per annum as of July 2023.



Lease

Expires August 2114.

Ofcom

For broadband speeds and mobile coverage please visit <https://www.ofcom.org.uk/>, if Rightmove have deleted this link then please click on our attached PDF brochure and click on the link there. If the subject property is a new build then please refer to the developer's specification.

33 Market Place, Wantage, Oxon, OX12 8AL t:01235 763562 e:sales@greenand.co.uk

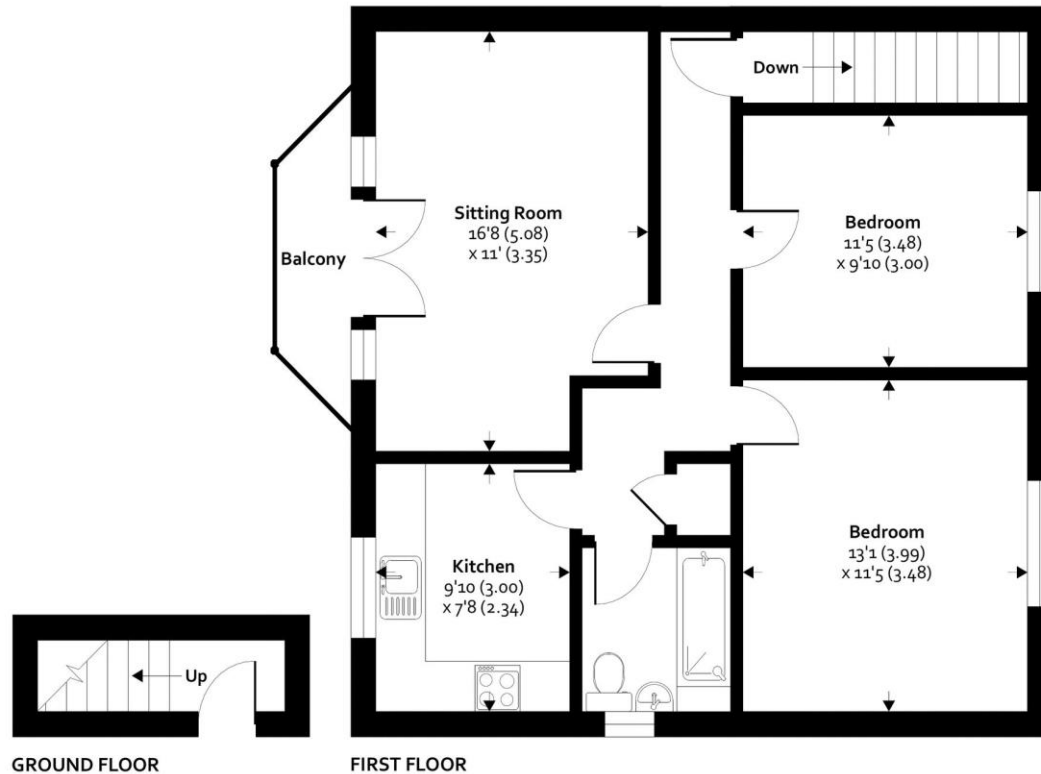




GREEN &
CO

Beckett House, Wallingford Street, Wantage, OX12 8AZ

Approximate Area = 739 sq ft / 68.6 sq m
For identification only - Not to scale



Floor plan produced in accordance with RICS Property Measurement Standards incorporating International Property Measurement Standards (IPMS2 Residential). ©nichecom 2023. Produced for Green & Co. REF: 1017445

Utilities

All main services connected except gas.

Heating Type

Electric storage heaters.

EER

D.

Council Tax Band

C.



33 Market Place, Wantage, Oxon, OX12 8AL t:01235 763562 e:sales@greenand.co.uk

Buyers must check the availability and/or any particular aspect of the property that could be of importance to them before booking an appointment to view or embarking on any journey to see it. Floor plans are provided entirely for illustrative purposes only and are NOT to scale. These particulars are copyright and are not to be reproduced in anyway without our written consent.

CONSUMER PROTECTION REGULATIONS AND UNFAIR TRADING REGULATIONS 2008

Green & Co has not tested any apparatus, equipment, fixtures and fittings or services and so cannot verify that they are in working order or fit for the purpose. References to the Tenure of a Property are based on information supplied by the Seller. We have not had sight of the title documents. Buyers should seek professional advice. Items shown in photographs are NOT included unless specifically mentioned within the sales particulars. Unless stated otherwise fitted carpets, curtains, window dressings, fixtures and fittings may not be included. However, they may be available by separate negotiation.

DATA PROTECTION ACT 2018

All handling of your personal data is done in compliance with our privacy policy and the General Data Protection Regulations (EU) 2016/679 ("Data Protection Legislation"). For full details of our privacy policy visit www.greenand.co.uk/primary-policy-and-notice.