

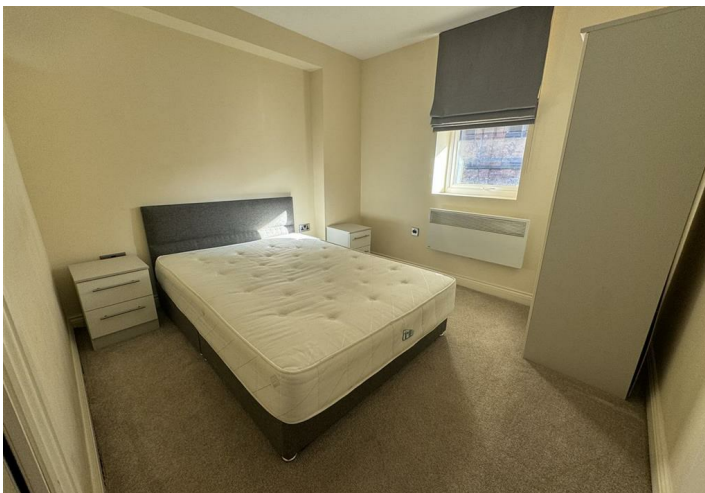
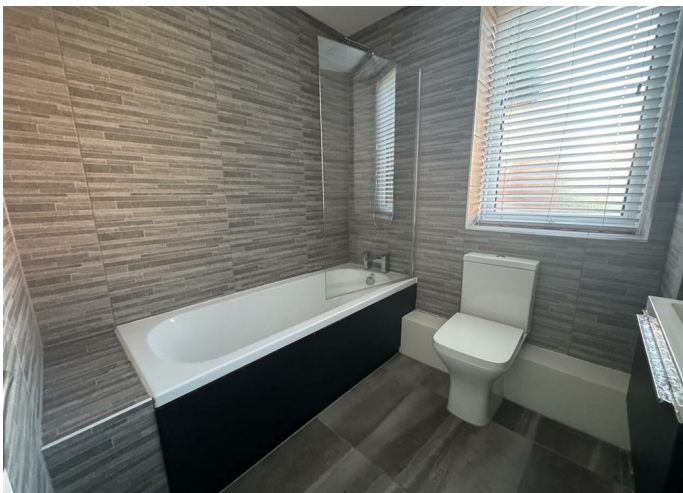
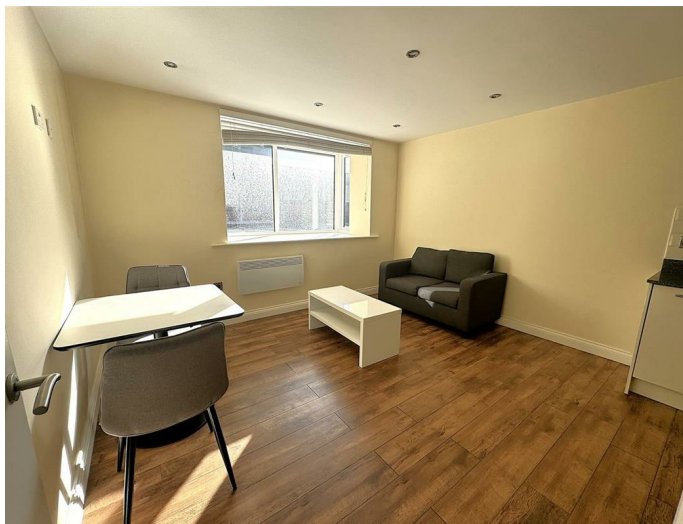


Brunswick Court, Leeds, LS2 7SA, £875 PCM

Well presented One bedroom apartment located just off Regent Street. The furnished accommodation comprises: Entrance hall, Open plan Living Room with fully fitted Kitchen with white goods, Double bedroom and Bathroom with walk in shower. Parking if available is an additional £50 per month. 5 Minutes walk to Victoria Gate. Deposit £1009. EPC Rating D. Council tax band B.

**1****1****B**

Brunswick Court, Leeds, LS2 7SA



- Furnished
- 1 Bedroom
- Parking available at additional cost.
- Fitted Kitchen

Energy Efficiency Rating		
	Current	Potential
Very energy efficient - lower running costs		
(92 plus) A		
(81-91) B		
(69-80) C		
(55-68) D		
(39-54) E		
(21-38) F		
(1-20) G		
Not energy efficient - higher running costs		
England & Wales	EU Directive 2002/91/EC	

Environmental Impact (CO ₂) Rating		
	Current	Potential
Very environmentally friendly - lower CO ₂ emissions		
(92 plus) A		
(81-91) B		
(69-80) C		
(55-68) D		
(39-54) E		
(21-38) F		
(1-20) G		
Not environmentally friendly - higher CO ₂ emissions		
England & Wales	EU Directive 2002/91/EC	

