

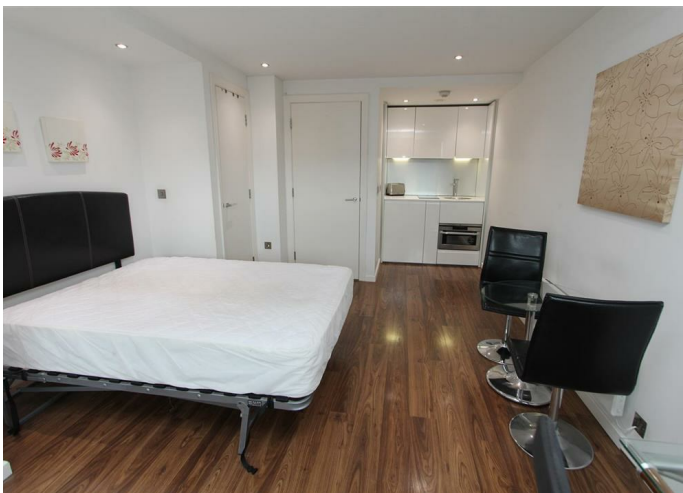


## **Bridgewater Place, Leeds, LS11 5QT, £775 PCM**

Spacious studio apartment available at Bridgewater Place. The apartment consists of hallway, laundry room, shower room and an open plan studio living space. The bed folds away to afford greater floor space in the living room, creating a convenient, flexible living space. 24 hour concierge, security cameras throughout building, 24 hour gym, Tesco and Starbucks on ground floor. The apartment has far reaching views across Leeds. Deposit £890. EPC Rating B. Council tax band A.

**1****1****A**

## Bridgewater Place, Leeds, LS11 5QT



- Studio
- Open Plan Living Space
  - Fitted Kitchenette
  - Shower room
- Central location

| Energy Efficiency Rating                    |                         |                         |
|---|-------------------------|-------------------------|
|   | Current                 | Potential               |
| Very energy efficient - lower running costs |                         |                         |
| (92 plus) A                                 |                         |                         |
| (81-91) B                                   |                         |                         |
| (69-80) C                                   |                         |                         |
| (55-68) D                                   |                         |                         |
| (39-54) E                                   |                         |                         |
| (21-38) F                                   |                         |                         |
| (1-20) G                                    |                         |                         |
| Not energy efficient - higher running costs |                         |                         |
| England & Wales                             | EU Directive 2002/91/EC | EU Directive 2002/91/EC |

| Environmental Impact (CO <sub>2</sub> ) Rating                  |                         |                         |
|---|-------------------------|-------------------------|
|   | Current                 | Potential               |
| Very environmentally friendly - lower CO <sub>2</sub> emissions |                         |                         |
| (92 plus) A   |                         |                         |
| (81-91) B   |                         |                         |
| (69-80) C   |                         |                         |
| (55-68) D   |                         |                         |
| (39-54) E   |                         |                         |
| (21-38) F   |                         |                         |
| (1-20) G  |                         |                         |
| Not environmentally friendly - higher CO <sub>2</sub> emissions |                         |                         |
| England & Wales   | EU Directive 2002/91/EC | EU Directive 2002/91/EC |

