



Balmoral Place, Leeds, LS10 1HQ, £1,350 PCM

This spectacular apartment is located in the popular Brewery Wharf development and is offered furnished. It boasts a sunny balcony off from the open plan living room and kitchen. The kitchen comprises of integrated appliances including washing machine, fridge/freezer and dishwasher. The master bedroom has an ensuite as well as a built in wardrobe, the second bedroom is a good sized double. In addition to the ensuite bathroom, there is a house bathroom with bathtub and overhead shower. The property is very well furnished throughout and is in a pristine condition! INCLUDES SECURE PARKING SPACE. On-site gym and concierge. Deposit: £1,555. EPC Rating B. Council Tax Band D.

**2****2****D**

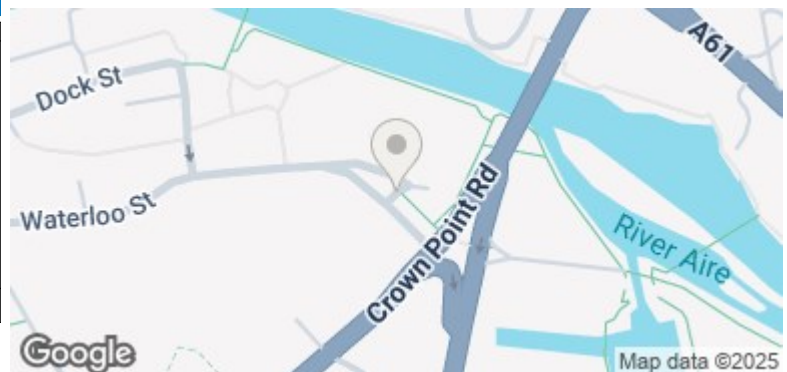
Balmoral Place, Leeds, LS10 1HQ



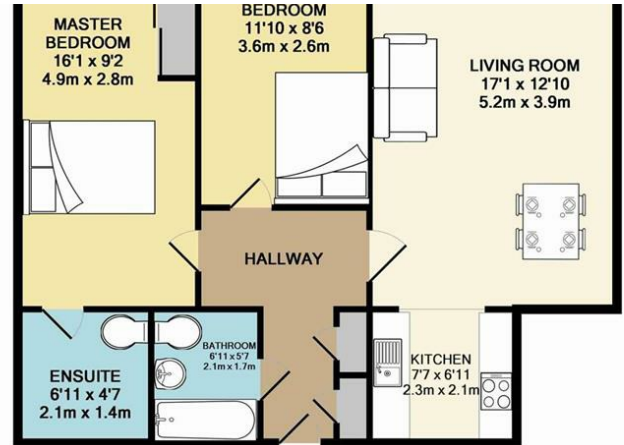
- Two Double Bedrooms
- Furnished
- Dishwasher
- South Facing Balcony
- On-site Gym
- Concierge

Energy Efficiency Rating		
	Current	Potential
Very energy efficient - lower running costs		
(92 plus) A		
(81-91) B		
(69-80) C		
(55-68) D		
(39-54) E		
(21-38) F		
(1-20) G		
Not energy efficient - higher running costs		
England & Wales	EU Directive 2002/91/EC	

Environmental Impact (CO ₂) Rating		
	Current	Potential
Very environmentally friendly - lower CO ₂ emissions		
(92 plus) A		
(81-91) B		
(69-80) C		
(55-68) D		
(39-54) E		
(21-38) F		
(1-20) G		
Not environmentally friendly - higher CO ₂ emissions		
England & Wales	EU Directive 2002/91/EC	



Balmoral Place, Leeds, LS10 1HQ



- Secure parking space

Energy Efficiency Rating		
	Current	Potential
Very energy efficient - lower running costs		
(92 plus) A		
(81-91) B		
(69-80) C		
(55-68) D		
(39-54) E		
(21-38) F		
(1-20) G		
Not energy efficient - higher running costs		
England & Wales	EU Directive 2002/91/EC	

Environmental Impact (CO ₂) Rating		
	Current	Potential
Very environmentally friendly - lower CO ₂ emissions		
(92 plus) A		
(81-91) B		
(69-80) C		
(55-68) D		
(39-54) E		
(21-38) F		
(1-20) G		
Not environmentally friendly - higher CO ₂ emissions		
England & Wales	EU Directive 2002/91/EC	

