



Brunswick Court, Leeds, LS2 7SA, £795 PCM

Well presented One bedroom apartment located just off Regent Street. The furnished accommodation comprises: Entrance hall, Open plan Living Room with fully fitted Kitchen with white goods, Double bedroom and Bathroom with walk in shower. Parking if available is an additional £50 per month. 5 Minutes walk to Victoria Gate. Deposit £917. EPC Rating D. Council tax band B.



1

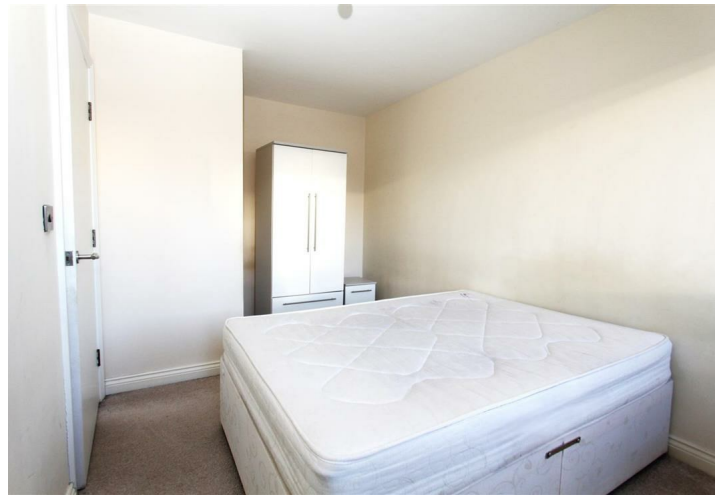


1



B

Brunswick Court, Leeds, LS2 7SA



- **Furnished**
- **Fitted Kitchen**
- **1 Bedroom**
- **Bathroom with shower**
- **Parking available at additional cost.**

Energy Efficiency Rating		Current	Potential
Very energy efficient - lower running costs			
(92 plus) A			
(81-91) B			
(69-80) C			
(55-68) D		67	67
(39-54) E			
(21-38) F			
(1-20) G			
Not energy efficient - higher running costs			
England & Wales	EU Directive 2002/91/EC		

Environmental Impact (CO ₂) Rating		Current	Potential
Very environmentally friendly - lower CO ₂ emissions			
(92 plus) A			
(81-91) B			
(69-80) C			
(55-68) D			
(39-54) E			
(21-38) F			
(1-20) G			
Not environmentally friendly - higher CO ₂ emissions			
England & Wales	EU Directive 2002/91/EC		

