



Echo Central One, Leeds, LS9 8FL
£94,950

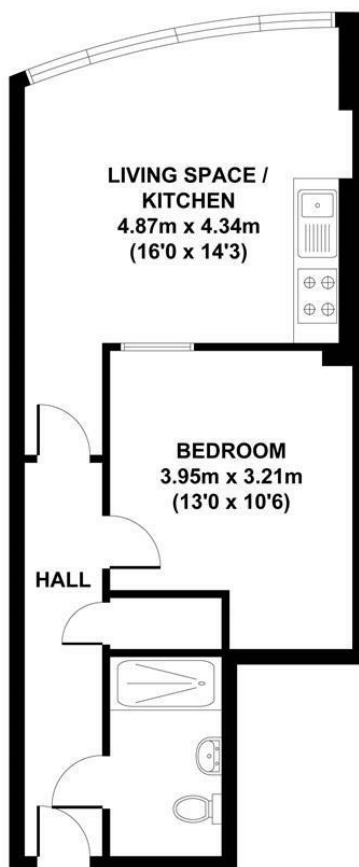
- One double Bedroom
- Tiled Shower Room
- Fitted Kitchen
- Close to City Centre
- Open plan Living Room

We are delighted to offer for sale this one bedroom apartment at Echo Central One. The accommodation comprises: Entrance Hallway, Open plan Living Room with fully equipped fitted Kitchen, Double Bedroom and a fully tiled shower room.

One of the standout features of this flat is its excellent transport links, making commuting a breeze. Additionally, you will find yourself just a short walk away from the vibrant city centre, where a variety of amenities await, including shops, restaurants, and leisure facilities.

This property is ideal for individuals or couples seeking a convenient and comfortable living space in a prime location to enjoy the best of city living.

EPC Rating C.
Council tax band A.



GROSS INTERNAL
FLOOR AREA 42 SQ M

130 ECHO CENTRAL ONE, CROSS GREEN LANE, LEEDS, LS9 8FL
APPROX. GROSS INTERNAL FLOOR AREA 42 SQ M / 452 SQ FT

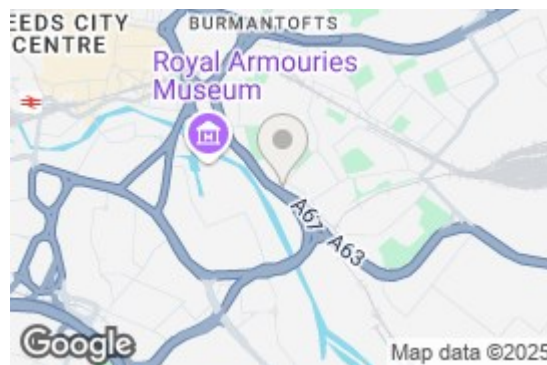
Whilst every attempt has been made to ensure the accuracy of the floorplan contained here, measurements of doors, windows and rooms are approximate and no responsibility is taken for any error, omission or mis-statement. These plans are for representation purposes only and should be used as such by any prospective purchaser. The services, systems and appliances listed in this specification have not been tested and no guarantee as to their operating ability or their efficiency can be given.

Echo Central One, Leeds, LS9 8FL

Leasehold Information

Annual ground rent: £200

One bedroom apartment available at Echo Central One.



These particulars are intended to give a fair and reliable description of the property, but no responsibility for any inaccuracy or error can be accepted and do not constitute an offer or contract. The owner/occupier informed us that any service/appliances (including central heating if fitted) referred to in this brochure operated satisfactorily but they have not been tested(*). If a property is unoccupied at any time there may be reconnection charges for any switched off/disconnected or drained services or appliances. N.B. All measurements are approximate.