



Hyde Terrace, Leeds, LS2 9LN, £1,387 PCM

****£159.99 PER PERSON PER WEEK**PLEASE CALL 0113 220040 TO VIEW*****Wonderful conversion of a highly impressive gothic style building. A 2 bedroom, split level apartment with beamed ceilings. All fixtures and fittings are of an excellent standard, giving a contemporary feel. Ash cube style, contemporary fitted kitchen with stainless steel oven and hob, dishwasher and washing machine. Features laminated wooden flooring, leather sofas and beech furniture. Fully tiled bathroom with blue mosaic tiling with bath and shower. Intercom entry system and a burglar alarm, landscaped gardens & free off-street parking. COUNCIL TAX BAND A



2



1



A

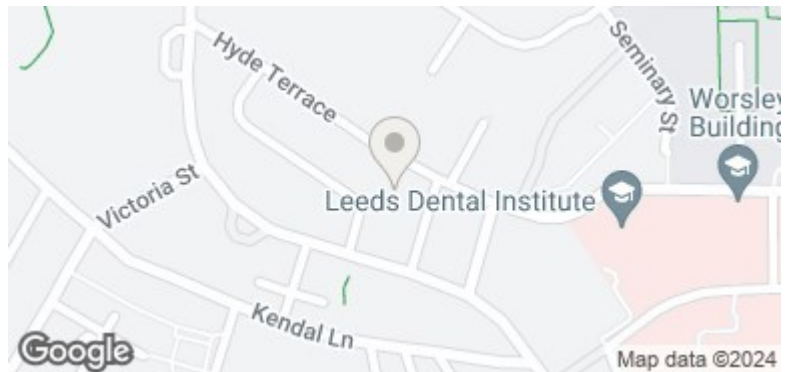
Hyde Terrace, Leeds, LS2 9LN



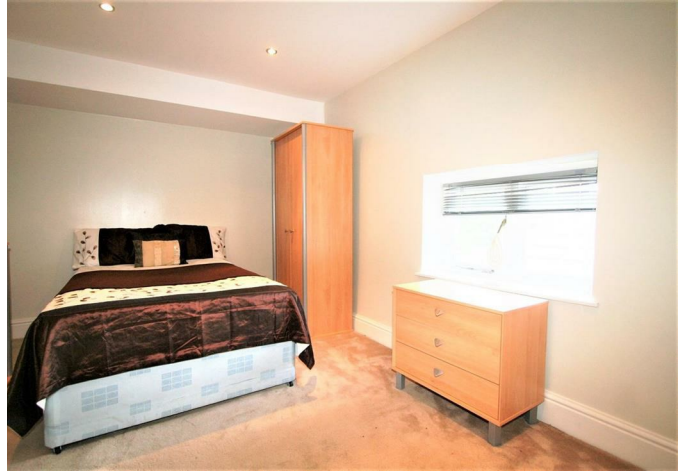
- Shower
- Bath
- Double Beds
- Double Glazing
- Washing Machine
- Garden

Energy Efficiency Rating	
Current	Potential
Very energy efficient - lower running costs	
(92 plus) A	
(81-91) B	
(69-80) C	
(55-68) D	
(39-54) E	50
(21-38) F	
(1-20) G	
Not energy efficient - higher running costs	
England & Wales	EU Directive 2002/91/EC

Environmental Impact (CO ₂) Rating	
Current	Potential
Very environmentally friendly - lower CO ₂ emissions	
(92 plus) A	
(81-91) B	
(69-80) C	
(55-68) D	
(39-54) E	44
(21-38) F	
(1-20) G	
Not environmentally friendly - higher CO ₂ emissions	
England & Wales	EU Directive 2002/91/EC



Hyde Terrace, Leeds, LS2 9LN



- Parking
- Dishwasher

Energy Efficiency Rating	
Current	Potential
Very energy efficient - lower running costs	
(92 plus) A	
(81-91) B	
(69-80) C	
(55-68) D	
(39-54) E	50
(21-38) F	
(1-20) G	
Not energy efficient - higher running costs	
England & Wales	
EU Directive 2002/91/EC	

Environmental Impact (CO ₂) Rating	
Current	Potential
Very environmentally friendly - lower CO ₂ emissions	
(92 plus) A	
(81-91) B	
(69-80) C	
(55-68) D	
(39-54) E	44
(21-38) F	
(1-20) G	
Not environmentally friendly - higher CO ₂ emissions	
England & Wales	
EU Directive 2002/91/EC	

