

# To Let



- Large Enclosed garden
- Kitchen with appliances
- Bedroom/sitting room
- Bathroom with shower
- Parking
- Close to local amenities
- Council Tax Band – A
- Energy Performance Rating - C75

**Old Hatch Warren, Basingstoke**

**£925.00 PCM**

**SIMMONS & SONS**

[www.simmonsandsons.com](http://www.simmonsandsons.com)



**23 Berkeley Drive,  
Old Hatch Warren,  
Basingstoke,  
RG22 4NS**

Unfurnished, ground floor studio apartment in a popular area close to local amenities and within a short drive of Basingstoke town centre. Entrance hall with cupboard, bedroom/sitting room with door to enclosed sunny garden, kitchen with oven and hob, fridge/freezer and washer/dryer, bathroom with shower over bath, spacious enclosed garden with shed. One allocated parking space. Dimplex Quantum heating. Regrets: NO PETS

**Local Authority** – Basingstoke and Deane Borough Council

**Council Tax Band** - A

**Energy Performance Rating** - C75

**Services**

Heating: Electric

Water: Mains Supply

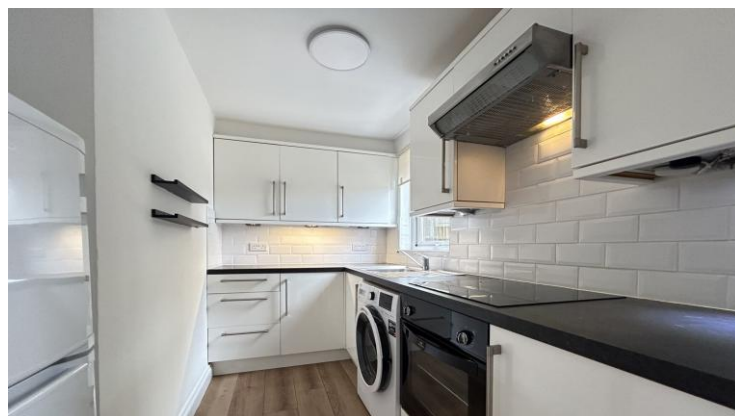
Sewerage: Mains Supply

Broadband: Fibre to cabinet

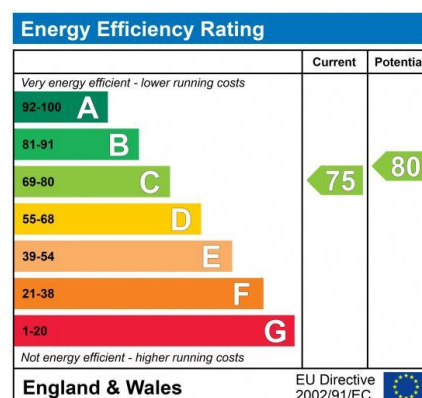
**VIEWINGS** - Strictly by appointment only with  
Simmons & Sons - Basingstoke Lettings

T: 01256 337100

E: basingstoke@simmonsandsons.com



Simmons & Sons Surveyors LLP for themselves and for the vendors or lessors of the property whose agents they are give notice that: (i) the particulars are produced in good faith, are set out as a general guide only and do not constitute any part of a contract or offer; (ii) all descriptions, dimensions, references to condition and necessary permissions for use and occupation, and any other details are given in good faith and are believed to be correct, but any intending purchasers or tenants should not rely on them as statements or representations of fact but must satisfy themselves by inspection or otherwise as to the correctness of each of them; (iii) No person in the employment of Simmons & Sons has any authority to make or give any representation or warranty whatsoever in relation to this property.



Sales	Lettings & Management	Commercial	Development	Rural
32 Bell Street Henley-on-Thames Oxon RG9 2BH T: 01491 571111	1 High Street Marlow Bucks SL7 1AX T: 01628 484353	12 Wote Street Basingstoke Hants RG21 7NW T: 01256 327711	Peper Harow The Estate Office Godalming GU8 6BQ T: 01483 418151	