

# SIMMONS & SONS

---



## Jibbs Meadow, Bramley £1,150 PCM

Centrally located two bedroom ground floor apartment within walking distance to Bramley station and the village centre. Basingstoke and Reading are easily accessible. The accommodation comprises: lounge/dining room, kitchen with electric hob, oven and extractor, washing machine, space for fridge/freezer, inner hall, main bedroom with fitted wardrobes, second double bedroom, bathroom with shower over bath, one allocated parking space. Electric heating. Regrets - No Pets.

- 2 bedrooms
- Allocated parking
- EPC Rating D/65
- Spacious lounge/dining room
- Close to railway station
- Council Tax Band C - £1832.59

# Jibbs Meadow, Bramley

£1,150 PCM

---

2 bedroom ground floor apartment within walking distance to Bramley station and the village centre.

Council Tax Band C - £1832.59. EPC Rating D/65

## **Disclaimer**

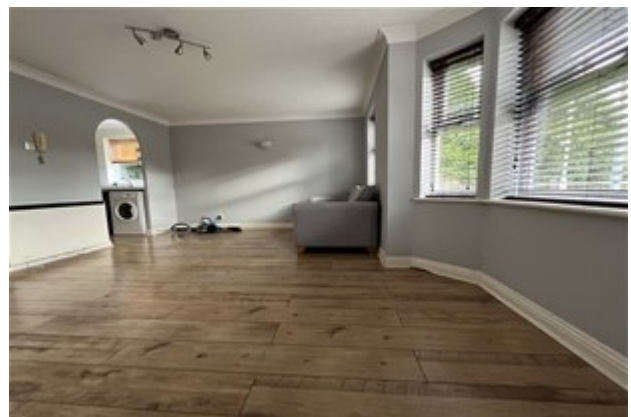
Simmons and Sons Surveyors LLP for themselves and for the vendors or lessors of the property whose agents they are give notice that: (i) the particulars are produced in good faith, are set out as a general guide only and do not constitute any part of a contract or offer; (ii) all descriptions, dimensions, references to condition and necessary permissions for use and occupation, and any other details are given in good faith and are believed to be correct, but any intending purchasers or tenants should not rely on them as statements or representations of fact but must satisfy themselves by inspection or otherwise as to the correctness of each of them; (iii) No person in the employment of Simmons and Sons has any authority to make or give any representation or warranty whatsoever in relation to this property.

To book an appointment to view this property please phone the Basingstoke Lettings branch on Tel: 01256 337100 and quote ID: 61115.

# Jibbs Meadow, Bramley

£1,150 PCM

---



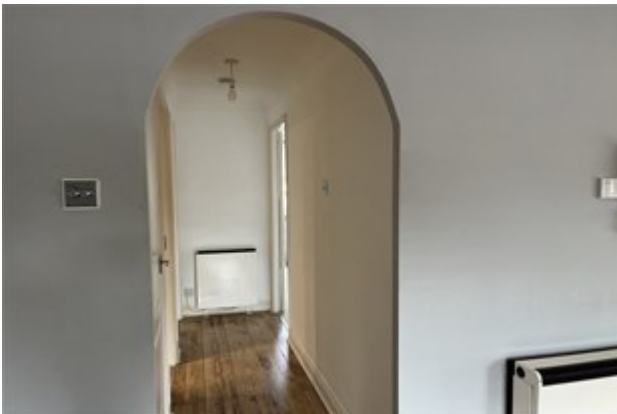
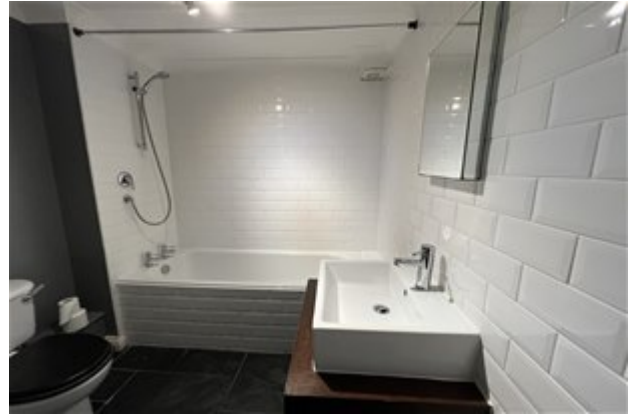
---

Viewings via: Simmons & Sons, 12 Wote Street, Basingstoke, Hants, RG21 7NW

# Jibbs Meadow, Bramley

£1,150 PCM

---



# Jibbs Meadow, Bramley

£1,150 PCM

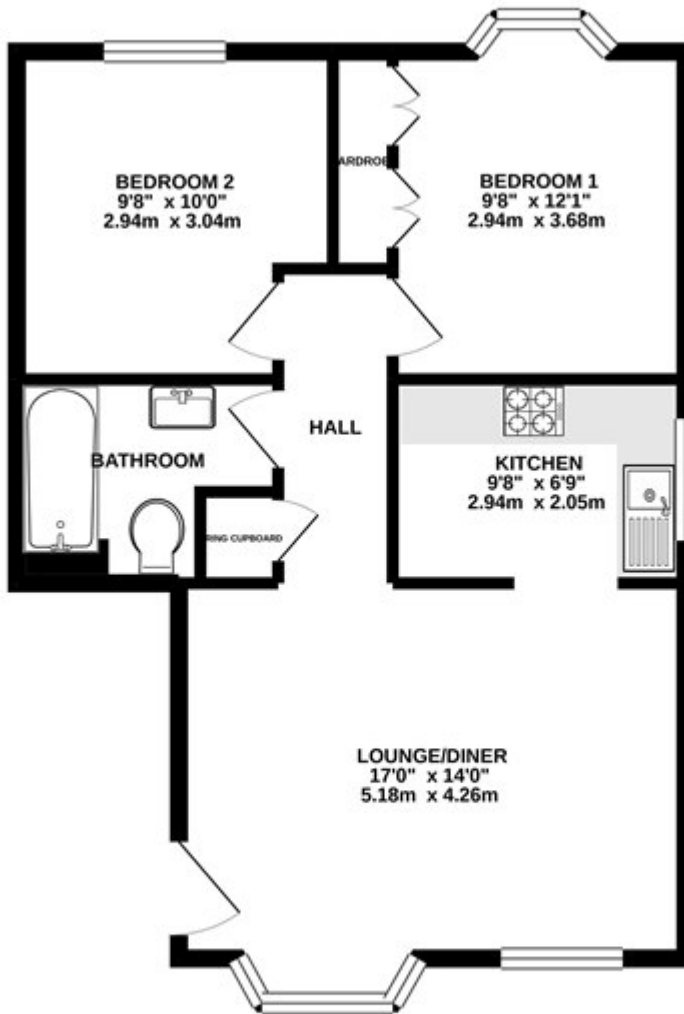
---



# Jibbs Meadow, Bramley

£1,150 PCM

GROUND FLOOR  
579 sq.ft. (53.8 sq.m.) approx.



TOTAL FLOOR AREA: 579 sq ft. (53.8 sq.m.) approx.

Whilst every attempt has been made to ensure the accuracy of the floorplan contained here, measurements of doors, windows, rooms and any other items are approximate and no responsibility is taken for any error, omission or mis-statement. This plan is for illustrative purposes only and should be used as such by any prospective purchaser. The services, systems and appliances shown have not been tested and no guarantee as to their operability or efficiency can be given.  
Made with Metropix ©2020