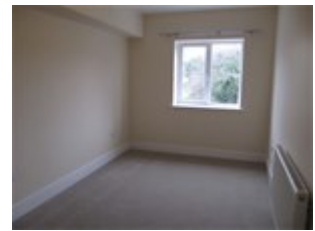


# SIMMONS & SONS

---



## Rasavi Apartments, Kings Furlong Centre, Basingstoke £1,100 PCM

Good sized, 1 bedroom first floor unfurnished apartment situated close to local amenities and within walking distance of Basingstoke Town Centre. The accommodation comprises: secure entry system, lounge, kitchen/breakfast room with oven, hob, washing machine and fridge/freezer, double bedroom, bathroom with shower over bath. Outside: bike shed. Gas fired central heating. Regret no pets.

- Close to Town Centre.
- Double Bedroom
- Council Tax band B - £1570.30
- Secure entry system
- EPC Rating B/82

# Rasavi Apartments, Kings Furlong Centre, Basingstoke

## £1,100 PCM

---

Light and airy one double bedroom apartment close to Basingstoke Town Centre.  
Council Tax Band B - £1570.30  
EPC Rating: B/82

### **Disclaimer**

Simmons and Sons Surveyors LLP for themselves and for the vendors or lessors of the property whose agents they are give notice that: (i) the particulars are produced in good faith, are set out as a general guide only and do not constitute any part of a contract or offer; (ii) all descriptions, dimensions, references to condition and necessary permissions for use and occupation, and any other details are given in good faith and are believed to be correct, but any intending purchasers or tenants should not rely on them as statements or representations of fact but must satisfy themselves by inspection or otherwise as to the correctness of each of them; (iii) No person in the employment of Simmons and Sons has any authority to make or give any representation or warranty whatsoever in relation to this property.

To book an appointment to view this property please phone the Basingstoke Residential Lettings branch on Tel: 01256 337100 and quote ID: 75625.

# Rasavi Apartments, Kings Furlong Centre, Basingstoke

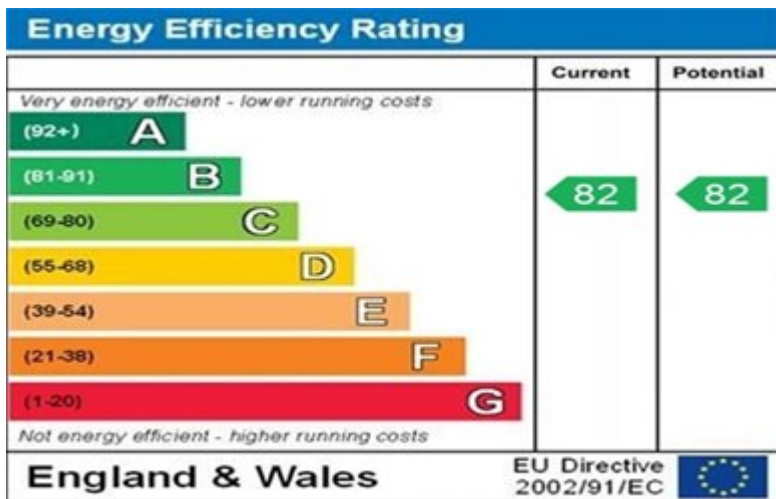
## £1,100 PCM

---



# Rasavi Apartments, Kings Furlong Centre, Basingstoke

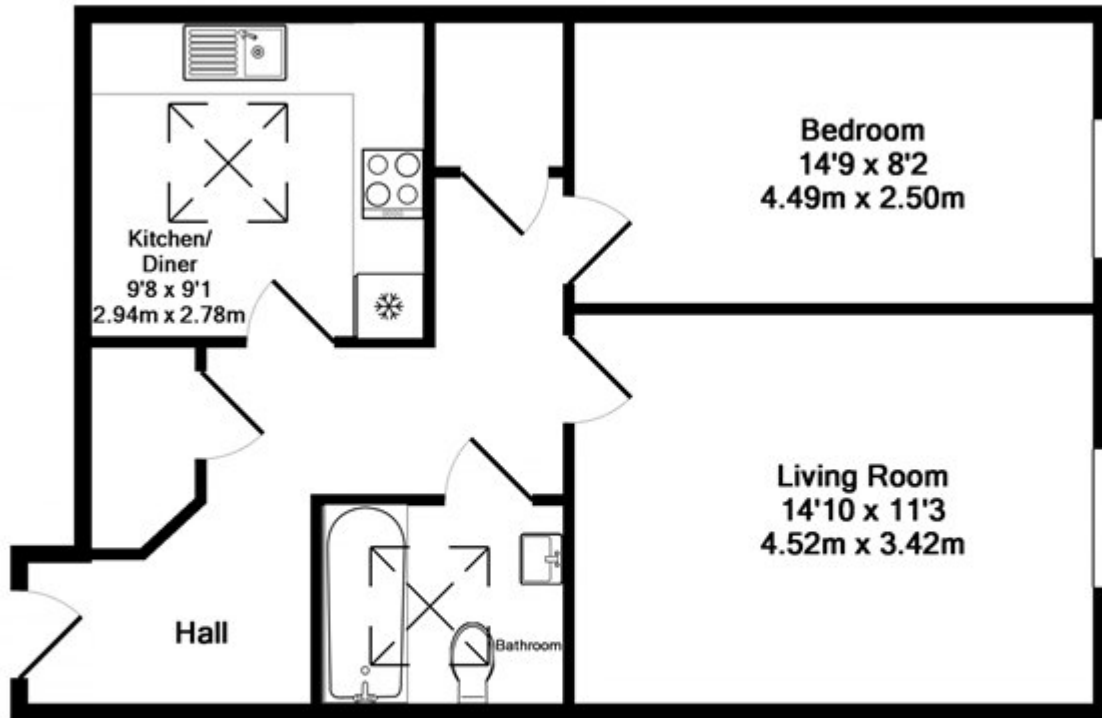
## £1,100 PCM



# Rasavi Apartments, Kings Furlong Centre, Basingstoke

£1,100 PCM

---



TOTAL APPROX. FLOOR AREA 558 SQ.FT. (51.9 SQ.M.)

Made with Metropix ©2019