

SIMMONS & SONS



Exeter Close, Kempshott Rise, Basingstoke £995 PCM

1 bedroom back to back house with garden and parking in a quiet cul de sac location. The accommodation comprises: entrance porch, lounge open plan to modern kitchen with appliances and dining area, bedroom with built in cupboard, bathroom with shower over bath. GFCH, double glazed, garden with access to allocated parking space. Regret NO PETS.

- Quiet Location
- Garden
- Allocated Parking
- Gas Heating
- EPC Rating C/70
- Council Tax Band B - £1570.30

Exeter Close, Kempshott Rise, Basingstoke

£995 PCM

Attractive 1 bedroom unfurnished cluster house with garden and parking in a quiet cul de sac location. Council Tax Band B - £1570.30. EPC Rating C/70.

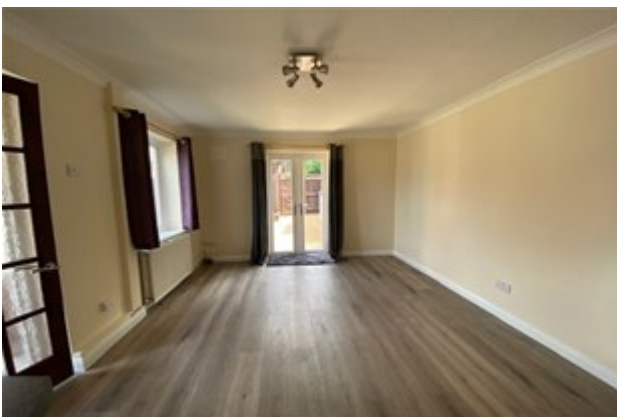
Disclaimer

Simmons and Sons Surveyors LLP for themselves and for the vendors or lessors of the property whose agents they are give notice that: (i) the particulars are produced in good faith, are set out as a general guide only and do not constitute any part of a contract or offer; (ii) all descriptions, dimensions, references to condition and necessary permissions for use and occupation, and any other details are given in good faith and are believed to be correct, but any intending purchasers or tenants should not rely on them as statements or representations of fact but must satisfy themselves by inspection or otherwise as to the correctness of each of them; (iii) No person in the employment of Simmons and Sons has any authority to make or give any representation or warranty whatsoever in relation to this property.

To book an appointment to view this property please phone the Basingstoke Residential Lettings branch on Tel: 01256 337100 and quote ID: 36809.

Exeter Close, Kempshott Rise, Basingstoke

£995 PCM



Viewings via: Simmons & Sons, 12 Wote Street, Basingstoke, Hants, RG21 7NW

Exeter Close, Kempshott Rise, Basingstoke

£995 PCM



Viewings via: Simmons & Sons, 12 Wote Street, Basingstoke, Hants, RG21 7NW

Exeter Close, Kempshott Rise, Basingstoke

£995 PCM

