

SIMMONS & SONS



High Ridge House, Hook £1,150 PCM

Unique industrial conversion set in a semi-rural location within easy reach of Hook, Hartley Wintney and Basingstoke. The accommodation comprises: hallway leading to cloakroom with w.c., wash handbasin and understairs storage area, kitchen with double oven, electric hob, washing machine and fridge/freezer, open plan to sitting room, stairs to first floor bedroom, leading to bathroom with shower over bath and w.c.. Allocated parking with small grass area to the front of the property. Council tax included, water and electricity separately metered and invoiced by landlord. Electric heating. Regrets: No pets.

- Unique conversion
- Kitchen open plan to sitting room
- EPC Rating D/55
- 1 Bedroom
- Allocated Parking

High Ridge House, Hook

£1,150 PCM

Newly converted spacious 1 bedroom property. EPC Rating D/55

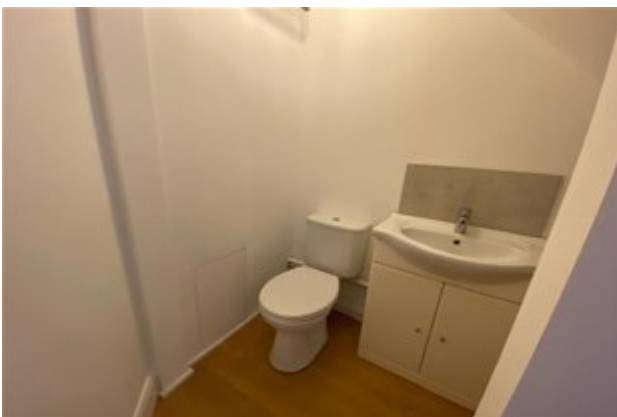
Disclaimer

Simmons and Sons Surveyors LLP for themselves and for the vendors or lessors of the property whose agents they are give notice that: (i) the particulars are produced in good faith, are set out as a general guide only and do not constitute any part of a contract or offer; (ii) all descriptions, dimensions, references to condition and necessary permissions for use and occupation, and any other details are given in good faith and are believed to be correct, but any intending purchasers or tenants should not rely on them as statements or representations of fact but must satisfy themselves by inspection or otherwise as to the correctness of each of them; (iii) No person in the employment of Simmons and Sons has any authority to make or give any representation or warranty whatsoever in relation to this property.

To book an appointment to view this property please phone the Basingstoke Lettings branch and quote ID: 93164.

High Ridge House, Hook

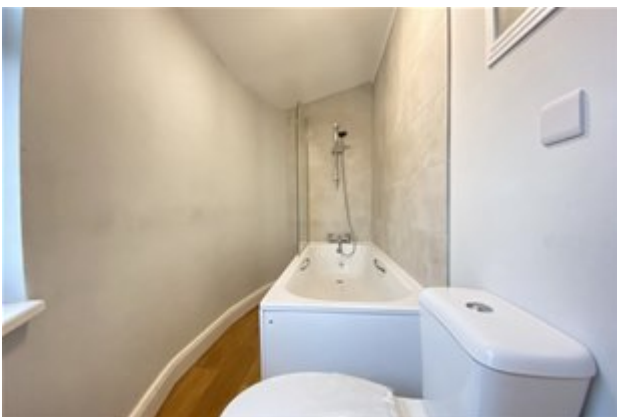
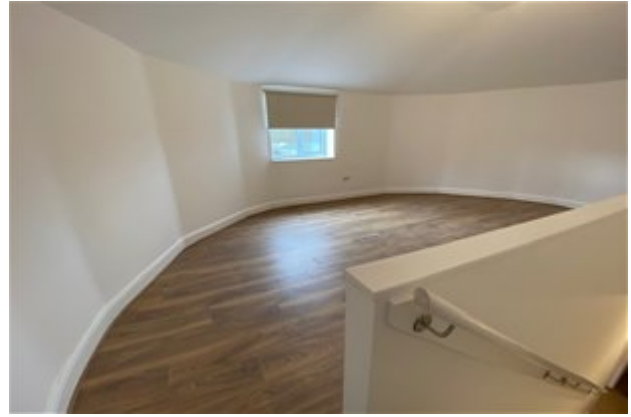
£1,150 PCM



Viewings via: Simmons & Sons, 12 Wote Street, Basingstoke, Hants, RG21 7NW

High Ridge House, Hook

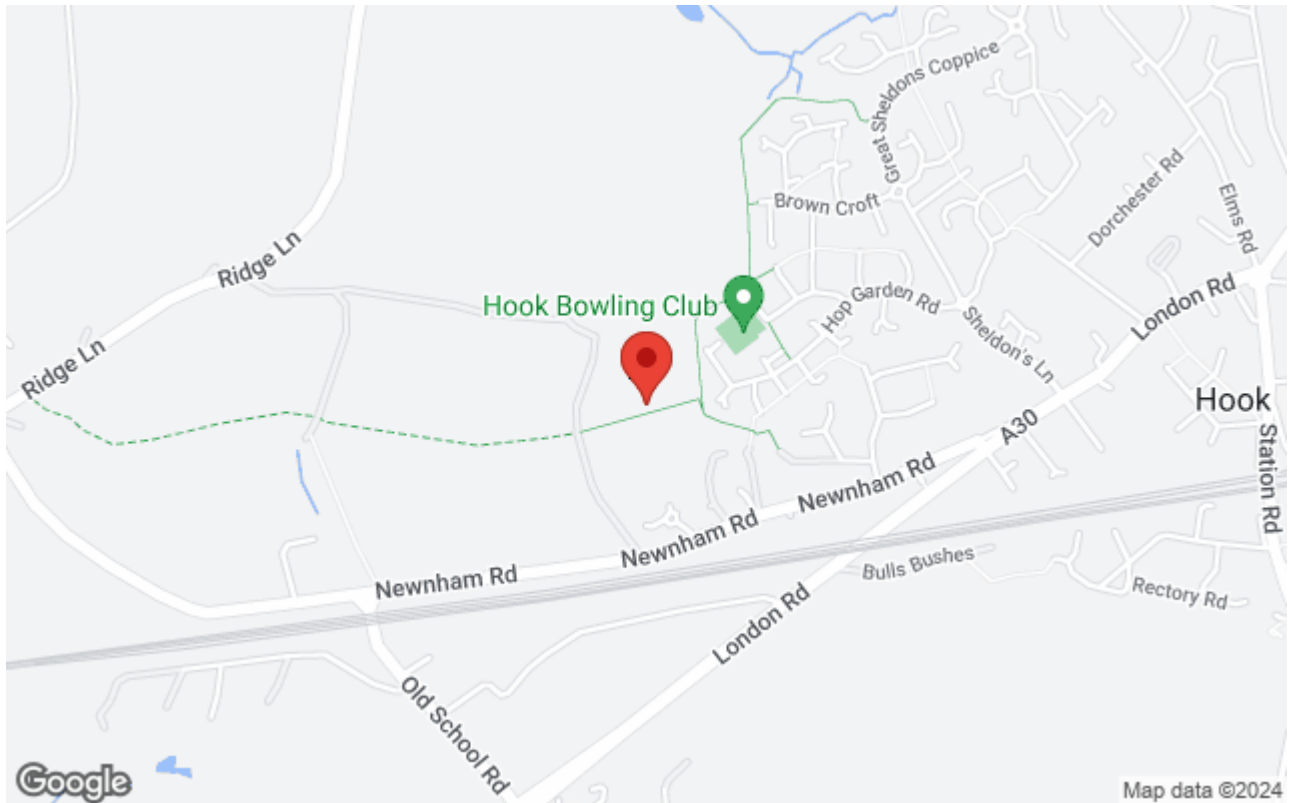
£1,150 PCM



Viewings via: Simmons & Sons, 12 Wote Street, Basingstoke, Hants, RG21 7NW

High Ridge House, Hook

£1,150 PCM



Viewings via: Simmons & Sons, 12 Wote Street, Basingstoke, Hants, RG21 7NW