

SIMMONS & SONS



Barley View, Basingstoke £3,200 PCM

5 bedroom executive family home situated in a quiet cul-de-sac in the sought after village of North Waltham, the property benefits from a self contained annexe situated above the garage, a brand new kitchen, new flooring and has been redecorated throughout.

- 5 bedrooms
- 3 Reception rooms
- Double garage
- Studio Annexe
- Family kitchen
- Easy access M3

Barley View, Basingstoke

£3,200 PCM

Executive detached family house situated in the popular village of North Waltham, the property benefits from a self contained annexe above the garage.
EPC Rating: D/58 Council Tax Band G - £3283.67

auto generated - set text in paramters

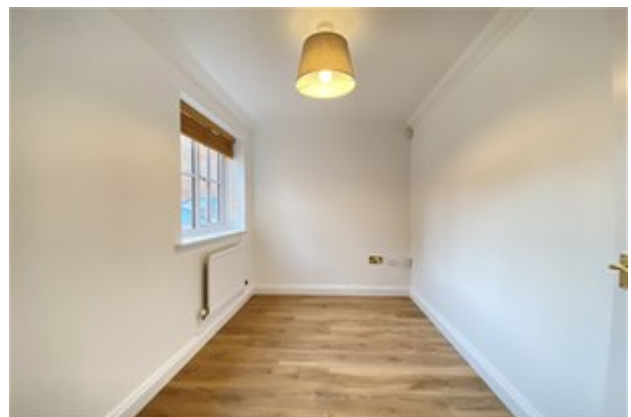
Disclaimer

Simmons and Sons Surveyors LLP for themselves and for the vendors or lessors of the property whose agents they are give notice that: (i) the particulars are produced in good faith, are set out as a general guide only and do not constitute any part of a contract or offer; (ii) all descriptions, dimensions, references to condition and necessary permissions for use and occupation, and any other details are given in good faith and are believed to be correct, but any intending purchasers or tenants should not rely on them as statements or representations of fact but must satisfy themselves by inspection or otherwise as to the correctness of each of them; (iii) No person in the employment of Simmons and Sons has any authority to make or give any representation or warranty whatsoever in relation to this property.

To book an appointment to view this property please phone the Basingstoke Residential Lettings branch on Tel: 01256 337100 and quote ID: 22491.

Barley View, Basingstoke

£3,200 PCM



Viewings via: Simmons & Sons, 12 Wote Street, Basingstoke, Hants, RG21 7NW

Barley View, Basingstoke

£3,200 PCM



Viewings via: Simmons & Sons, 12 Wote Street, Basingstoke, Hants, RG21 7NW

Barley View, Basingstoke

£3,200 PCM



Viewings via: Simmons & Sons, 12 Wote Street, Basingstoke, Hants, RG21 7NW

Barley View, Basingstoke

£3,200 PCM



Viewings via: Simmons & Sons, 12 Wote Street, Basingstoke, Hants, RG21 7NW

Barley View, Basingstoke

£3,200 PCM



Viewings via: Simmons & Sons, 12 Wote Street, Basingstoke, Hants, RG21 7NW