

SIMMONS & SONS



Sheppard Road, Cranbourne, Basingstoke £1,150 PCM

Spacious first floor maisonette situated in this popular residential area within walking distance of local amenities and easy access to Basingstoke town centre and railway station. The accommodation comprises entrance porch with stairs to first floor, entrance hall, lounge/dining room, fully fitted kitchen with integrated fridge/freezer, oven and hob and washing machine, bathroom with shower over bath, double bedroom with mirrored fitted wardrobes, second double bedroom. The property benefits from gas radiator central heating, double glazing and a small enclosed rear garden.

- Lounge/Dining Room
- Double Bedrooms with wardrobes
- GCH and double glazed windows
- Modern kitchen with appliances
- Small Garden
- EPC Rating C/69

Sheppard Road, Cranbourne, Basingstoke

£1,150 PCM

2 Double bedroom maisonette situated in this popular residential area.
EPC Rating: C/69 Council Tax Band B - £1570.30

Disclaimer

Simmons and Sons Surveyors LLP for themselves and for the vendors or lessors of the property whose agents they are give notice that: (i) the particulars are produced in good faith, are set out as a general guide only and do not constitute any part of a contract or offer; (ii) all descriptions, dimensions, references to condition and necessary permissions for use and occupation, and any other details are given in good faith and are believed to be correct, but any intending purchasers or tenants should not rely on them as statements or representations of fact but must satisfy themselves by inspection or otherwise as to the correctness of each of them; (iii) No person in the employment of Simmons and Sons has any authority to make or give any representation or warranty whatsoever in relation to this property.

To book an appointment to view this property please phone the Basingstoke Residential Lettings branch on Tel: 01256 337100 and quote ID: 19854.

Sheppard Road, Cranbourne, Basingstoke

£1,150 PCM



Viewings via: Simmons & Sons, 12 Wote Street, Basingstoke, Hants, RG21 7NW

Sheppard Road, Cranbourne, Basingstoke

£1,150 PCM



Viewings via: Simmons & Sons, 12 Wote Street, Basingstoke, Hants, RG21 7NW

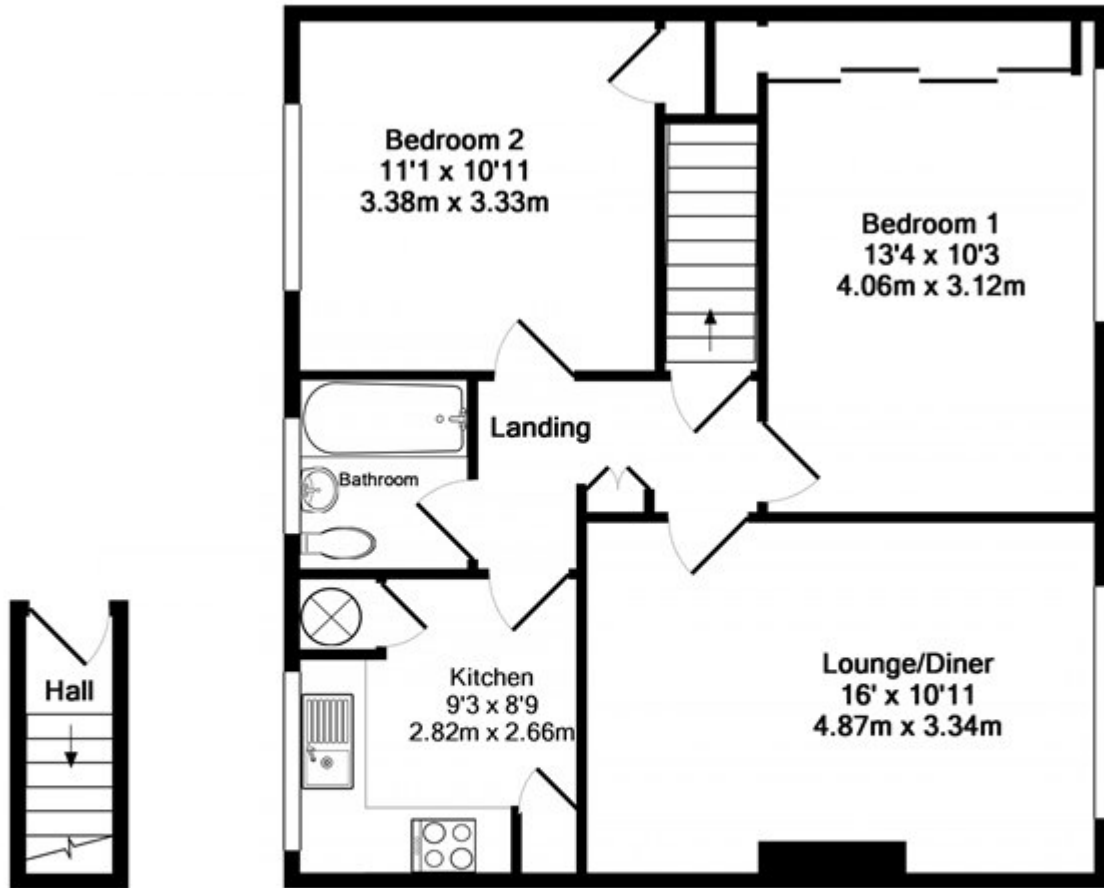
Sheppard Road, Cranbourne, Basingstoke

£1,150 PCM



Sheppard Road, Cranbourne, Basingstoke

£1,150 PCM



GROUND FLOOR
APPROX. FLOOR
AREA 25 SQ.FT.
(2.4 SQ.M.)

1ST FLOOR
APPROX. FLOOR
AREA 633 SQ.FT.
(58.8 SQ.M.)

TOTAL APPROX. FLOOR AREA 658 SQ.FT. (61.2 SQ.M.)

Made with Metropix ©2019