



8 Brackenhurst Drive, Leeds
£195,000

ALAN COOKE
SALES & LETTINGS

IDEAL FIRST TIME BUY - SPACIOUS TWO BEDROOM -
TWO BATHROOM APARTMENT WITHIN WALKING
DISTANCE OF MOORTOWN CORNER - OPEN PLAN
LIVING - DESIGNATED PARKING - IDEAL FOR LOCAL
AMENITIES/TRANSPORT LINKS - EPC RATING D

This modern, first floor apartment is an ideal first time buy for a discerning buyer wanting to be in a quiet location yet ideally located with shops, eateries and transport links literally on the door step. Situated within one of the smaller, two storey blocks in this popular development the property is accessed via security entryphone and has designated parking. Briefly comprising: Entrance hall with hanging area and storage cupboard. The open plan living/dining and fitted kitchen area in this apartment is just delightful, with two large windows and double doors with a Juliet style balcony it's a spacious area, ideal for entertaining. The master bedroom is a larger than average double with built in wardrobes and an en-suite shower. The second bedroom is also a generous double with built in wardrobes with a 'Jack & Jill' style en-suite bathroom with bath and shower. This apartment is exceptional value and so much square footage for the money! An internal viewing is essential to fully appreciate it - EPC RATING D

AREA GUIDE

This property enjoys an excellent location, well placed for local amenities at Moortown Corner, Street Lane and Chapel Allerton, all within walking distance. Leeds city centre and Harrogate are easily accessible

via frequent public transport links and there are schools for all ages in the area. Leisure facilities including golf courses and the David Lloyd leisure centre on the Ring Road are also available in the area.



15a Stonegate Road, Meanwood, Leeds, West Yorkshire, LS6 4HZ

Tel: 0113 289 9669

Email: info@alancookenet.co.uk

www.alancookenet.co.uk

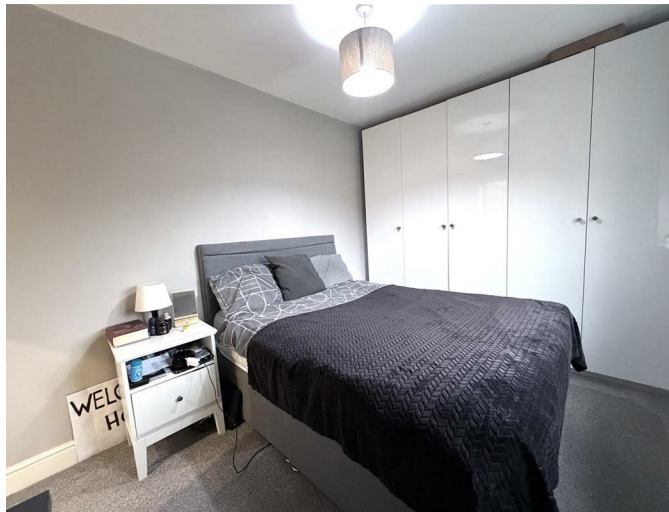


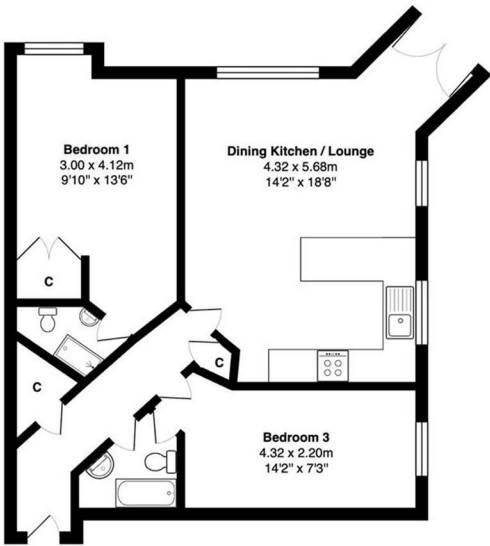
15a Stonegate Road, Meanwood, Leeds, West Yorkshire, LS6 4HZ

Tel: 0113 289 9669

Email: info@alancookenet.co.uk

www.alancookenet.co.uk





Ground Floor

Total Area: 61.9 m² ... 666 ft²
All measurements are approximate and for display purposes only

