



20 Hilton Road, Leeds
£1,400 Per calendar month

Located in in Chapeltown on Hilton Road, this property offers incredible square footage. With 4 large double bedrooms & seperate dining and living rooms there is incredible space for even the largest of families. Recently refubished kitchen & rear yard to accomodate parking is also included. Further parking is offered on street to the property. Conviently located within walking distance nearby are attractions such as the highstreet on Roundhey Road & large green space at Potternewton Park.

COUNCIL TAX BAND

B

EPC

The EPC graph (shown above) has been prepared by an external company on our behalf and is a document wherein we have no responsibility

EPC RATING

BAND C

MOBILE SIGNAL/BROADBAND COVERAGE

PLEASE CLICK ON THE FOLLOWING LINK TO ASSESS COVERAGE FOR THIS PROPERTY

<https://checker.ofcom.org.uk/>

PARKING

The parking at the property is Off Street

WATER METER

There is not a water meter in the property

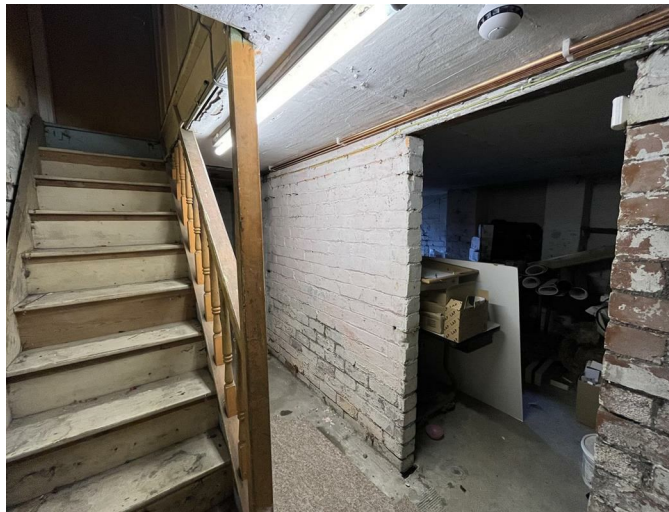


15a Stonegate Road, Meanwood, Leeds, West Yorkshire, LS6 4HZ

Tel: 0113 289 9669

Email: info@alancookenet.co.uk

www.alancookenet.co.uk



15a Stonegate Road, Meanwood, Leeds, West Yorkshire, LS6 4HZ

Tel: 0113 289 9669

Email: info@alancookenet.co.uk

www.alancookenet.co.uk





VIEWINGS

Please ring us to make an appointment. We are open from 9am to 5.30pm Monday to Friday and 9am-1pm Saturday. Alternately, please feel free to leave us a voicemail out of hours with your information and we will call you back.

COMPANY INFO

Alan Cooke Estate Agents MW Ltd. Incorporated in England 8067460

