



**CARVER**  
RESIDENTIAL  
Sales · Lettings · Property Management

Hawkesbury Mews  
Darlington, DL3 6RR

**Offers over £90,000**

Apartment  
2 Bedroom/s  
1 Bathroom/s



Located within this purpose built development, Hawkesbury Mews, is a spacious two-bedroom apartment which presents an excellent opportunity for a variety of buyers. The apartment is well placed for ease of access to the vibrant town centre, which offers a host of amenities.

Upon entering, you will find a secure intercom entry system, providing peace of mind and convenience. a welcoming hallway, and a spacious living/dining room and a fitted kitchen.

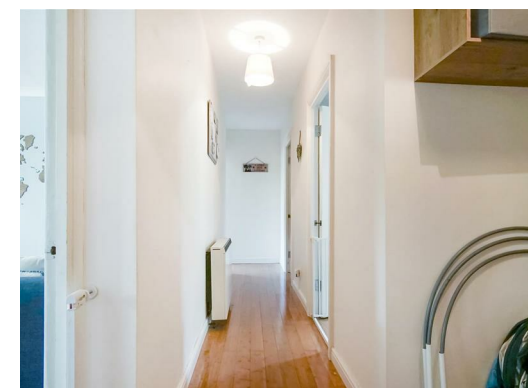
The apartment boasts two generously sized double bedrooms with family bathroom with bath and overhead shower.

Additionally, this property includes an allocated parking bay, ensuring that you have a designated space for your vehicle. The communal gardens offer a lovely outdoor space to enjoy.

This apartment is ideally suited for first-time buyers, small families, or those looking to downsize, combining comfort, convenience, and a welcoming community atmosphere. Don't miss the chance to make this lovely apartment your new home in Darlington.



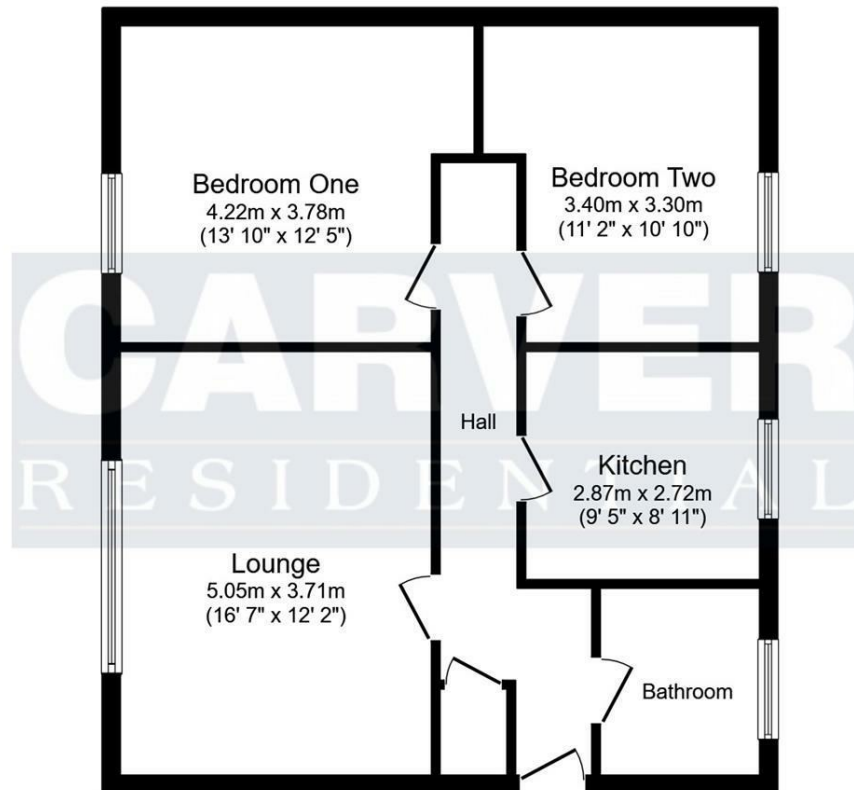




- WALKING DISTANCE TO THE VIBRANT TOWN CENTRE
- FITTED KITCHEN/DINER
- INTERCOM ENTRY SYSTEM
- COMMUNAL MATURE, ESTABLISHED GARDENS
- PVC DOUBLE GLAZING & ELECTRIC ECONOMY 7 HEATING
- TWO DOUBLE BEDROOMS
- TILED BATHROOM/WC WITH OVERHEAD SHOWER
- ALLOCATED PARKING BAY
- LOFT SPACE IDEAL FOR STORAGE

### TENURE

The property is leasehold held on a 125 year lease with 92 years remaining  
Service Charge: £1800 per annum



Energy Efficiency Rating		
	Current	Potential
Very energy efficient - lower running costs		
(92 plus) <b>A</b>		
(81-91) <b>B</b>		
(69-80) <b>C</b>		
(55-68) <b>D</b>		
(39-54) <b>E</b>		
(21-38) <b>F</b>		
(1-20) <b>G</b>		
Not energy efficient - higher running costs		
<b>England &amp; Wales</b>	EU Directive 2002/91/EC	

Total floor area: 68.0 sq.m. (732 sq.ft.)

This floor plan is for illustrative purposes only. It is not drawn to scale. Any measurements, floor areas (including any total floor area), openings and orientations are approximate. No details are guaranteed, they cannot be relied upon for any purpose and do not form any part of any agreement. No liability is taken for any error, omission or misstatement. A party must rely upon its own inspection(s). Powered by [www.Propertybox.io](http://www.Propertybox.io)

**We can search 1,000s of mortgages for you**

It could take just 15 minutes with one of our specialist advisers:  
Call: 01325 380088. Visit: Any of our Offices. Online: [www.mortgageadvicebureau.com/carver](http://www.mortgageadvicebureau.com/carver)



Your home may be repossessed if you do not keep up repayments on your mortgage.  
There will be a fee for mortgage advice. The actual amount you pay will depend upon your circumstances.  
The fee is up to 1% but a typical fee is 0.3% of the amount borrowed

MAB 6202



These particulars do not constitute any part of an offer or contract. None of the statements contained in these particulars are to be relied on as statements or representations of fact and any intending purchaser must satisfy himself by inspection or otherwise to the correctness of each of the statements contained in these particulars. The vendor does not make or give, and neither Nick & Gordon Carver Residential or Commercial, Nick & Gordon Carver, nor any person in their employment has any authority to make or give any representation or warranty whatever in relation to this property



**14 Duke Street, Darlington**  
**Co Durham, DL3 7AA**  
**01325 357807**  
**[sales@carvergroup.co.uk](mailto:sales@carvergroup.co.uk)**

**63 Dalton Way, Newton Aycliffe**  
**Co Durham DL5 4NB**  
**01325 320676**  
**[aycliffe@carvergroup.co.uk](mailto:aycliffe@carvergroup.co.uk)**

**41 Market Place, Richmond**  
**North Yorkshire, DL10 4QL**  
**01748 825317**  
**[richmond@carvergroup.co.uk](mailto:richmond@carvergroup.co.uk)**

**219 High Street, Northallerton**  
**North Yorkshire DL7 8LW**  
**01609 777710**  
**[northallerton@carvergroup.co.uk](mailto:northallerton@carvergroup.co.uk)**

**[www.carvergroup.co.uk](http://www.carvergroup.co.uk)**