





Show home condition, show home quality! You won't believe the finish on this near new home in Middleton St George. This stunning semi-detached 3 storey modern town house offers modern living and comfort. Built in 2021, the property is in show home condition, showcasing an exceptional finish that is sure to impress. Spanning an impressive 1,027 square feet, this home features two spacious reception rooms, providing ample space for the family and entertaining.

The property boasts four well-appointed bedrooms, making it ideal for families or those seeking extra space for guests. With three beautifully designed bathrooms, you will find convenience and luxury at every turn. The exceptional quality of the bathroom finishes throughout the home adds a touch of elegance, ensuring that every detail has been thoughtfully considered.

Outside, the generous garden presents a wonderful opportunity for you to add your personal touch, whether it be a tranquil retreat or a vibrant outdoor space for gatherings. Additionally, the property includes a single garage along with further off-street parking, providing practicality and ease for your daily needs.

This near-new home in Middleton St George close to all the local amenities and transport links is a rare find. If you are seeking a property that offers both style and functionality, this residence is not to be missed. Come and experience the charm of this delightful home for yourself.







- 3 Storey Modern Town House
- Private rear Garden
- Open plan Living
- Close to amenities of Middleton st George
- NO CHAIN
- Exceptionally well appointed and finished
- 4 Bedroom, 2 ensuite, family bathroom and downstairs W/C
- Single garage and further off street parking
- Fantastic transport Links, Rail, Road and Air

**GENERAL INFORMATION:**  
 Tenure: Freehold  
 Services: Gas central heating, mains electric, water and drainage.  
 Double glazing  
 Local Authority: Darlington Borough Council (Tax Banding D)





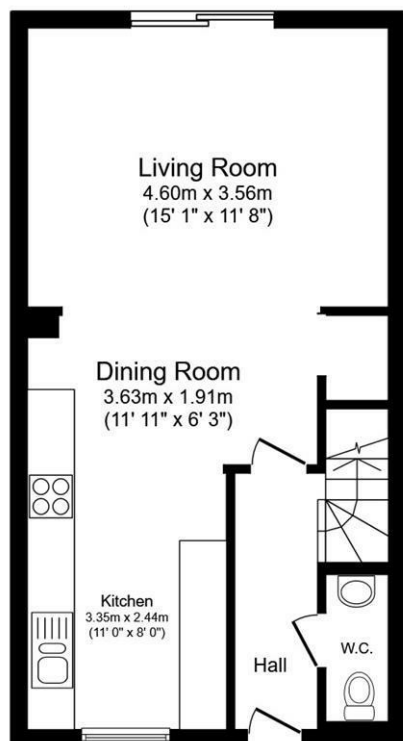




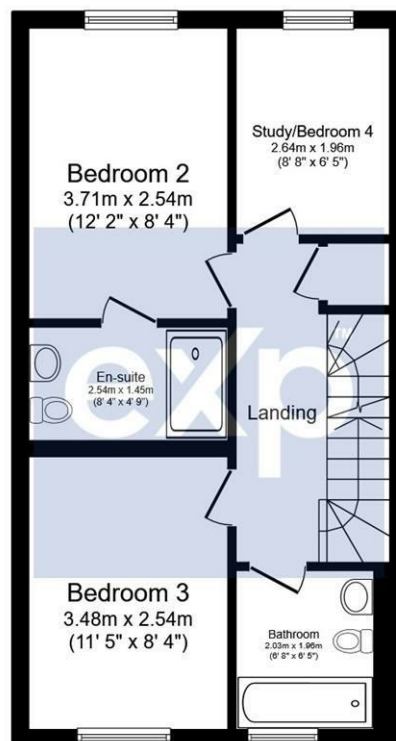




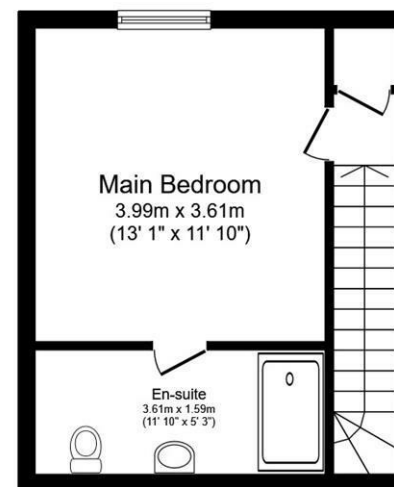




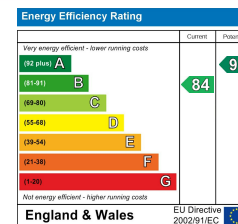
**Ground Floor**



**First Floor**



**Second Floor**



Total floor area 107.9 m<sup>2</sup> (1,161 sq.ft.) approx

This floor plan is for illustrative purposes only. It is not drawn to scale. Any measurements, floor areas (including any total floor area), openings and orientation are approximate. No details are guaranteed, they cannot be relied upon for any purpose and they do not form part of any agreement. No liability is taken for any error, omission or misstatement. A party must rely upon its own inspection(s). Powered by [www.focalagent.com](http://www.focalagent.com)

**We can search 1,000s of mortgages for you**

It could take just 15 minutes with one of our specialist advisers:  
Call: 01325 380088. Visit: Any of our Offices. Online: [www.mortgageadvicebureau.com/carver](http://www.mortgageadvicebureau.com/carver)



Your home may be repossessed if you do not keep up repayments on your mortgage. There will be a fee for mortgage advice. The actual amount you pay will depend upon your circumstances. The fee is up to 1% but a typical fee is 0.3% of the amount borrowed

MAB 6202



These particulars do not constitute any part of an offer or contract. None of the statements contained in these particulars are to be relied on as statements or representations of fact and any intending purchaser must satisfy himself by inspection or otherwise to the correctness of each of the statements contained in these particulars. The vendor does not make or give, and neither Nick & Gordon Carver Residential or Commercial, Nick & Gordon Carver, nor any person in their employment has any authority to make or give any representation or warranty whatever in relation to this property

**naea**  
**propertymark**

**PROTECTED**



**14 Duke Street, Darlington**  
**Co Durham, DL3 7AA**  
**01325 357807**  
**[sales@carvergroup.co.uk](mailto:sales@carvergroup.co.uk)**

**63 Dalton Way, Newton Aycliffe**  
**Co Durham DL5 4NB**  
**01325 320676**  
**[aycliffe@carvergroup.co.uk](mailto:aycliffe@carvergroup.co.uk)**

**41 Market Place, Richmond**  
**North Yorkshire, DL10 4QL**  
**01748 825317**  
**[richmond@carvergroup.co.uk](mailto:richmond@carvergroup.co.uk)**

**219 High Street, Northallerton**  
**North Yorkshire DL7 8LW**  
**01609 777710**  
**[northallerton@carvergroup.co.uk](mailto:northallerton@carvergroup.co.uk)**

**[www.carvergroup.co.uk](http://www.carvergroup.co.uk)**