



**CARVER**  
RESIDENTIAL  
Sales · Lettings · Property Management

9, Elmcroft,  
Darlington, DL1 3EL  
**Asking price £248,000**

House - Detached  
4 Bedroom/s  
2 Bathroom/s



Elmcroft, Darlington - This beautifully presented detached house, sitting on an enviable corner plot at the end of a nice quiet cul-de-sac boasts 2 reception rooms, 4 bedrooms, and 2 bathrooms, providing ample space for comfortable living.

This property offers privacy and tranquility, making it an ideal sanctuary to call home. Being the corner plot of the cul-de-sac, it offers parking spaces for 4 vehicles. With lots more space for additional parking available, you'll never have to worry about accommodating guests or family gatherings.

The private rear South facing garden is a delightful space for outdoor relaxation or entertaining, offering a peaceful escape from the hustle and bustle of everyday life. The master bedroom with ensuite /shower room provides a touch of luxury, ensuring a comfortable and convenient living experience.

Don't miss the opportunity to make this wonderful property your own - a perfect blend of space, tranquility, and comfort in the heart of Darlington.







- Envidable location, corner plot, quiet cul-de-sac
- 2 Reception rooms
- Master Bedroom with ensuite
- Private enclosed South facing rear garden
- Easy access to A1(M)
- 4 Bedrooms
- Family Bathroom
- Downstairs Cloakroom

**GENERAL INFORMATION:**

Tenure: Freehold

Services: Gas central heating, mains electric, water and drainage.  
Double glazing

Local Authority: Darlington Borough Council (Tax Banding C)









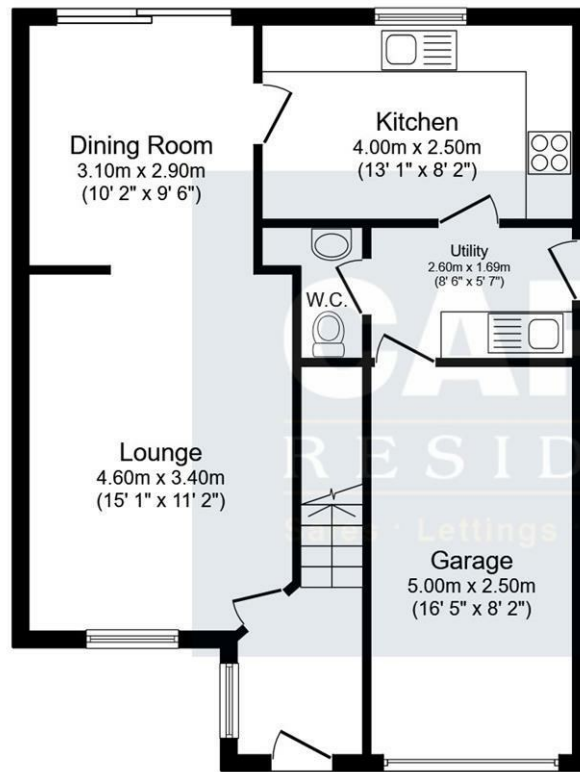




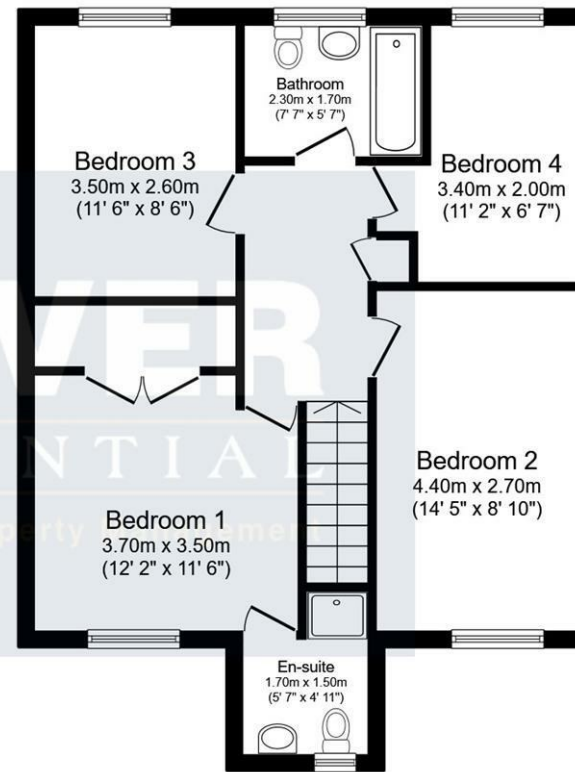








Ground Floor



First Floor

Energy Efficiency Rating		Current	Potential
Very energy efficient - lower running costs			
81-91	A		
69-80	B		
55-68	C		
45-54	D		
35-44	E		
25-34	F		
1-24	G		
Not energy efficient - higher running costs			
England & Wales		63	76
		EU Directive 2002/91/EC	

This floor plan is for illustrative purposes only. It is not drawn to scale. Any measurements, floor areas (including any total floor area), openings and orientations are approximate. No details are guaranteed, they cannot be relied upon for any purpose and do not form any part of any agreement. No liability is taken for any error, omission or misstatement. A party must rely upon its own inspection(s). Powered by www.Propertybox.co

We can search 1,000s of mortgages for you

It could take just 15 minutes with one of our specialist advisers:  
Call: 01325 380088. Visit: Any of our Offices. Online: [www.mortgageadvicebureau.com/carver](http://www.mortgageadvicebureau.com/carver)



Your home may be repossessed if you do not keep up repayments on your mortgage. There will be a fee for mortgage advice. The actual amount you pay will depend upon your circumstances. The fee is up to 1% but a typical fee is 0.3% of the amount borrowed

MAB 6202



These particulars do not constitute any part of an offer or contract. None of the statements contained in these particulars are to be relied on as statements or representations of fact and any intending purchaser must satisfy himself by inspection or otherwise to the correctness of each of the statements contained in these particulars. The vendor does not make or give, and neither Nick & Gordon Carver Residential or Commercial, Nick & Gordon Carver, nor any person in their employment has any authority to make or give any representation or warranty whatever in relation to this property

naea  
propertymark

PROTECTED



14 Duke Street, Darlington  
Co Durham, DL3 7AA  
01325 357807  
[sales@carvergroup.co.uk](mailto:sales@carvergroup.co.uk)

43 Dalton Way, Newton Aycliffe  
Co Durham DL5 4DJ  
01325 320676  
[aycliffe@carvergroup.co.uk](mailto:aycliffe@carvergroup.co.uk)

41 Market Place, Richmond  
North Yorkshire, DL10 4QL  
01748 825317  
[richmond@carvergroup.co.uk](mailto:richmond@carvergroup.co.uk)

219 High Street, Northallerton  
North Yorkshire DL7 8LW  
01609 777710  
[northallerton@carvergroup.co.uk](mailto:northallerton@carvergroup.co.uk)

[www.carvergroup.co.uk](http://www.carvergroup.co.uk)