



CARVER
RESIDENTIAL
Sales · Lettings · Property Management

Cedar Grove,
Middleton St. George, Darlington, DL2 1GA
Offers in the region of £500,000

House - Detached
6 Bedroom/s
3 Bathroom/s

NO ONWARD CHAIN. Situated at the lower end of Middleton Lane close to the hamlet of Middleton one row, with great countryside and river walks nearby, along with an award winning pub and restaurant within a close proximity. This large 6 bedroom house, set over three floors, has all necessary amenities for a great lifestyle. Situated in a mature setting, the property, to the front has a large mature front garden along with off-road parking for four cars. To the rear of the property is a West facing garden which benefits from all day sun so is perfect for summertime entertaining. Internally, the property briefly comprises entrance hallway, WC, two reception rooms, open plan kitchen/breakfast room, utility room and integral access into the double garage. The first floor landing gives access to five bedrooms, family bathroom and en-suite shower rooms off two of the bedrooms along with a useful dressing area within bedroom one. Bedroom three also has the advantage of a south/west facing balcony. The uppermost landing area is currently utilised as a study space with access to a further double bedroom with walk-in loft space. There are excellent transport links nearby, with Dinsdale train station 12 minutes' walk away with direct line into Darlington with connections to Newcastle, Edinburgh, York and London. In addition good road connections with A66, A1/A19 North and South. Overall, a highly impressive, large home in an excellent position.





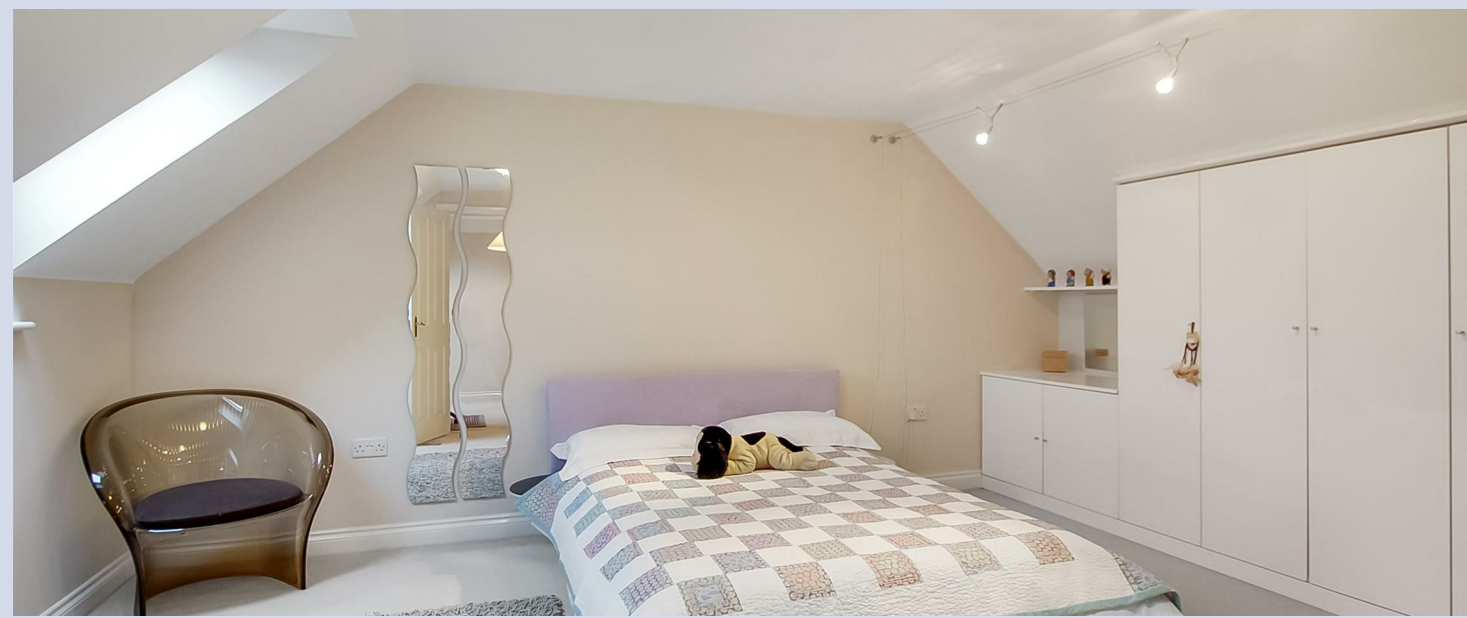
- CLOSE TO MIDDLETON-ONE-ROW
- POPULAR PUB/RESTAURANT ONLY 5 MINUTES' WALK AWAY
- WEST FACING REAR GARDEN
- DOUBLE GARAGE AND UTILITY ROOM
- DOWNSTAIRS WC
- PICTURESQUE COUNTRYSIDE AND RIVER WALKS NEARBY
- TREE LINED STREET
- PLENTY OF OFF STREET PARKING
- TWO EN-SUITE SHOWER ROOMS AND BATHROOM

GENERAL INFORMATION:

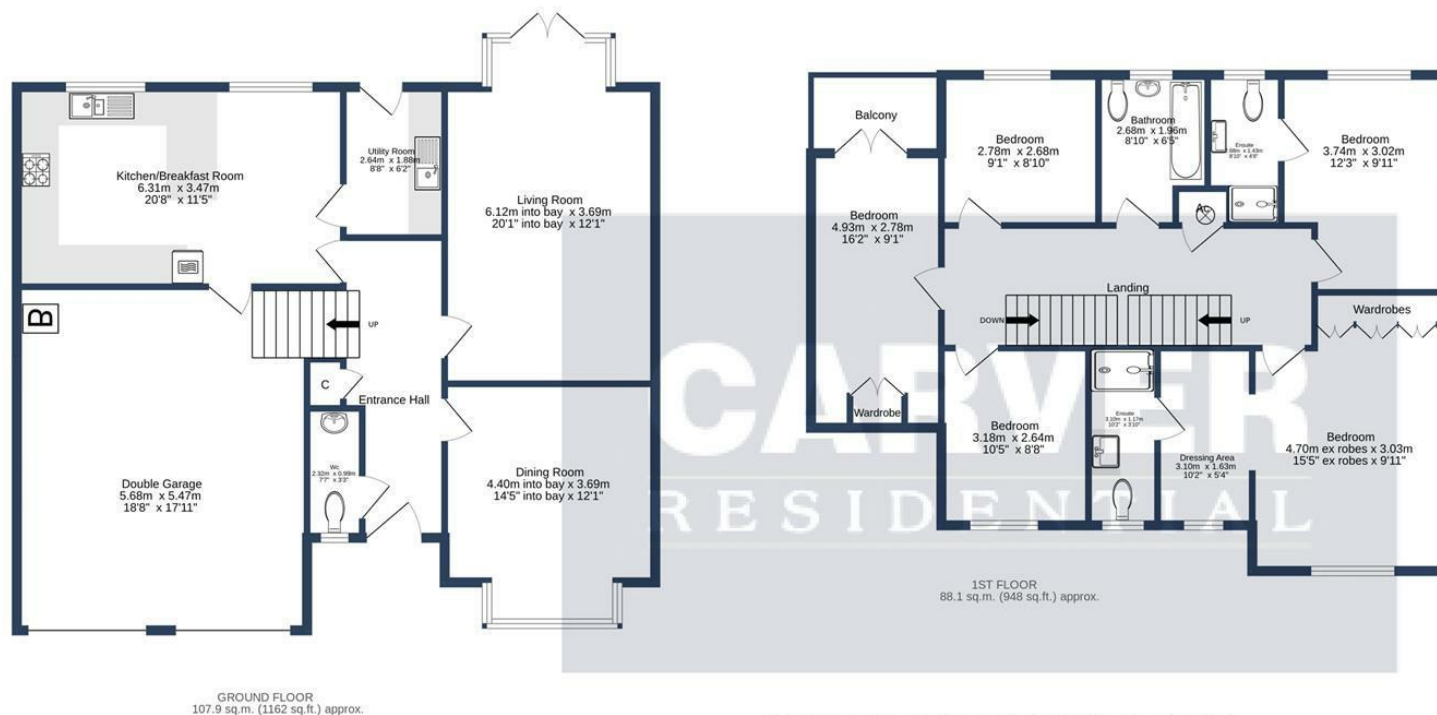
Tenure: Freehold
 Services: Gas central heating, mains electric, water and drainage.
 Double glazing
 Local Authority: Darlington Borough Council (Tax Banding G)



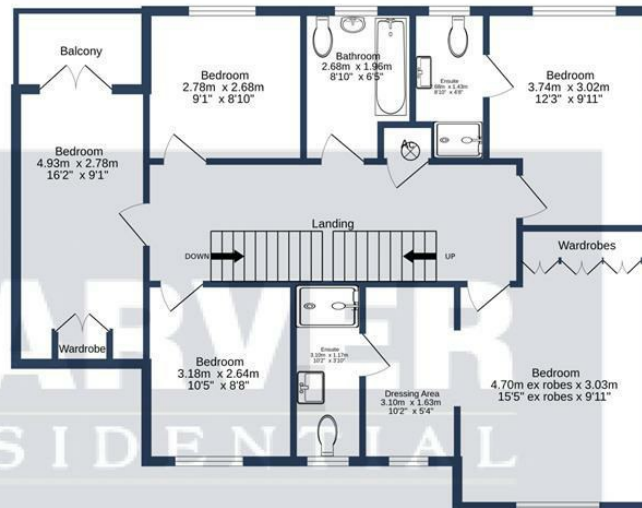




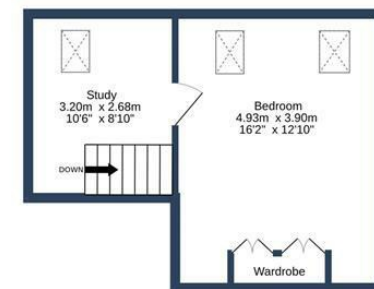




GROUND FLOOR
107.9 sq.m. (1162 sq.ft.) approx.



1ST FLOOR
88.1 sq.m. (948 sq.ft.) approx.



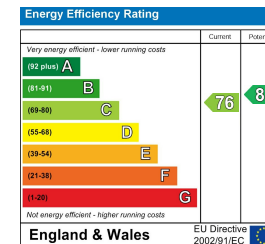
2ND FLOOR
26.9 sq.m. (290 sq.ft.) approx.

CARVER RESIDENTIAL

CEDAR GROVE, MIDDLETON-ST-GEORGE. DL2 1GA

TOTAL FLOOR AREA : 223.0 sq.m. (2400 sq.ft.) approx.

Whilst every attempt has been made to ensure the accuracy of the floorplan contained here, measurements of doors, windows, rooms and any other items are approximate and no responsibility is taken for any error, omission or mis-statement. This plan is for illustrative purposes only and should be used as such by any prospective purchaser. The services, systems and appliances shown have not been tested and no guarantee as to their operability or efficiency can be given.
Made with Metropix ©2023



We can search 1,000s of mortgages for you

It could take just 15 minutes with one of our specialist advisers:
Call: 01325 380088. Visit: Any of our Offices. Online: www.mortgageadvicebureau.com/carver



Your home may be repossessed if you do not keep up repayments on your mortgage. There will be a fee for mortgage advice. The actual amount you pay will depend upon your circumstances. The fee is up to 1% but a typical fee is 0.3% of the amount borrowed

MAB 6202



These particulars do not constitute any part of an offer or contract. None of the statements contained in these particulars are to be relied on as statements or representations of fact and any intending purchaser must satisfy himself by inspection or otherwise to the correctness of each of the statements contained in these particulars. The vendor does not make or give, and neither Nick & Gordon Carver Residential or Commercial, Nick & Gordon Carver, nor any person in their employment has any authority to make or give any representation or warranty whatever in relation to this property



14 Duke Street, Darlington
County Durham, DL3 7AA
Tel: 01325 357807
sales@carvergroup.co.uk

26 Market Place, Richmond
North Yorkshire, DL10 4QG
Tel: 01748 825317
richmond@carvergroup.co.uk

43 Dalton Way, Newton Aycliffe
County Durham, DL5 4DJ
Tel: 01325 320676
aycliffe@carvergroup.co.uk

219 High Street, Northallerton
North Yorkshire, DL7 8LW
Tel: 01609 777710
northallerton@carvergroup.co.uk