



**CARVER**  
RESIDENTIAL  
Sales · Lettings · Property Management

Cottagers Lane  
Manfield, Darlington, DL2 2RN  
**Offers over £450,000**

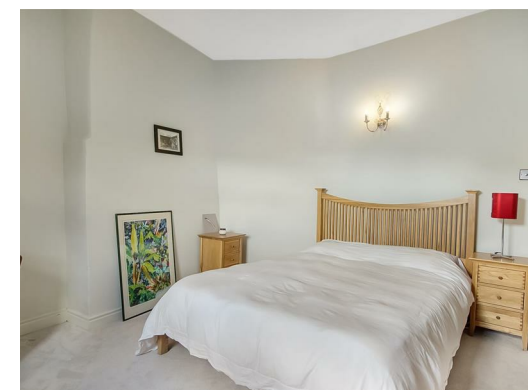
Not specified  
3 Bedroom/s  
1 Bathroom/s

**A detached and period cottage pleasantly positioned in the centre of the village overlooking the old Village Green towards the Church.**

Offering an abundance of charm and character the property briefly comprises two reception rooms, refurbished kitchen / dining room with solid granite work surfaces and integrated appliances, 3 double bedrooms, bathroom, utility room and WC. Externally there are landscaped gardens adjoining and overlooking the old Village Green with natural pond and two stone built potting/storage sheds. There is gravelled off street parking for a number of vehicles. The property enjoys a high level of privacy and viewing is strongly advised.

The property has undergone works to improve the energy efficiency of the building to include insulation of the walls and roof. There is potential for a loft extension following a previously successful planning permission.

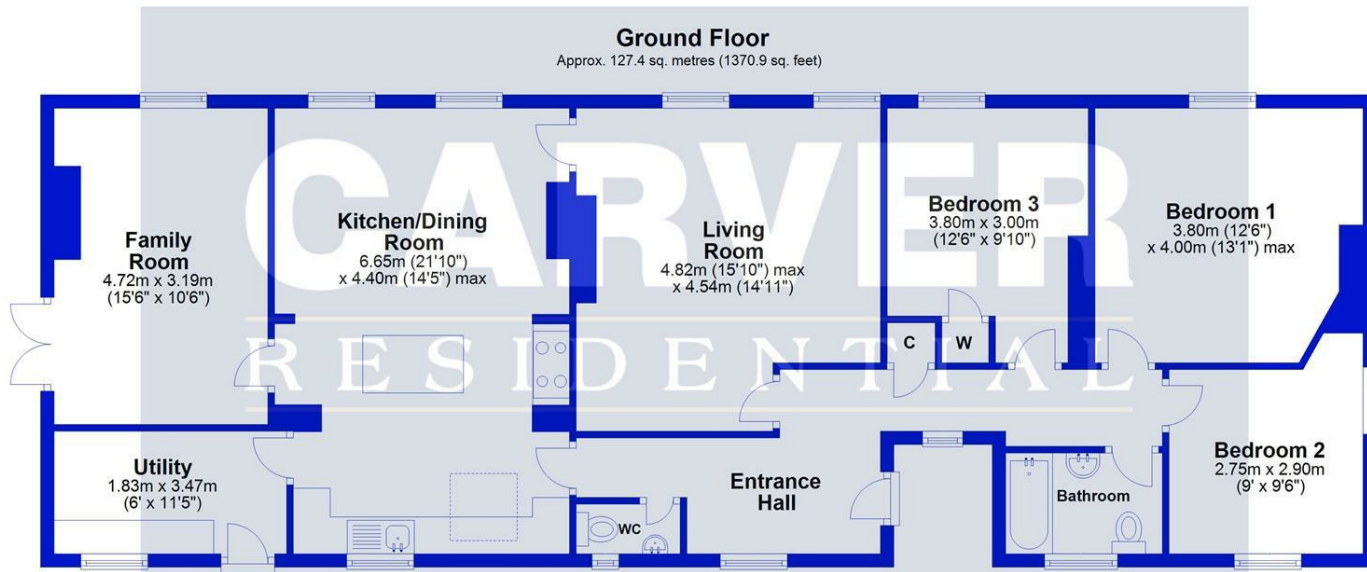




- Peaceful village setting
- Chain free
- Three double bedrooms
- Detached and very private stone build cottage
- 15 minutes drive to Darlington and Richmond.
- Two reception rooms

**GENERAL INFORMATION**

Tenure: Freehold  
 Services: Air Source Heat Pump. Solar Panels (owned outright. Fitted in 2013 - awaiting details of feed in tariff).  
 Mains electric, water and drainage.  
 Double glazing  
 Local Authority: Richmondshire. (Tax Banding E)



Energy Efficiency Rating		Current	Potential
Very energy efficient - lower running costs			
(92 plus) <b>A</b>			
(81-91) <b>B</b>			
(69-80) <b>C</b>		76	82
(55-68) <b>D</b>			
(39-54) <b>E</b>			
(21-38) <b>F</b>			
(1-20) <b>G</b>			
Not energy efficient - higher running costs			
<b>England &amp; Wales</b>		EU Directive 2002/91/EC	

Total area: approx. 127.4 sq. metres (1370.9 sq. feet)

For identification purposes only. Not to scale.  
Plan produced using PlanUp.

**We can search 1,000s of mortgages for you**

It could take just 15 minutes with one of our specialist advisers:  
Call: 01325 380088. Visit: Any of our Offices. Online: [www.mortgageadvicebureau.com/carver](http://www.mortgageadvicebureau.com/carver)



Your home may be repossessed if you do not keep up repayments on your mortgage. There will be a fee for mortgage advice. The actual amount you pay will depend upon your circumstances. The fee is up to 1% but a typical fee is 0.3% of the amount borrowed

MAB 6202



These particulars do not constitute any part of an offer or contract. None of the statements contained in these particulars are to be relied on as statements or representations of fact and any intending purchaser must satisfy himself by inspection or otherwise to the correctness of each of the statements contained in these particulars. The vendor does not make or give, and neither Nick & Gordon Carver Residential or Commercial, Nick & Gordon Carver, nor any person in their employment has any authority to make or give any representation or warranty whatever in relation to this property



14 Duke Street, Darlington  
County Durham, DL3 7AA  
Tel: 01325 357807  
[sales@carvergroup.co.uk](mailto:sales@carvergroup.co.uk)

26 Market Place, Richmond  
North Yorkshire, DL10 4QG  
Tel: 01748 825317  
[richmond@carvergroup.co.uk](mailto:richmond@carvergroup.co.uk)

43 Dalton Way, Newton Aycliffe  
County Durham, DL5 4DJ  
Tel: 01325 320676  
[aycliffe@carvergroup.co.uk](mailto:aycliffe@carvergroup.co.uk)

219 High Street, Northallerton  
North Yorkshire, DL7 8LW  
Tel: 01609 777710  
[northallerton@carvergroup.co.uk](mailto:northallerton@carvergroup.co.uk)

[www.carvergroup.co.uk](http://www.carvergroup.co.uk)