

OAK MEADOWS



6

1455 SQ FT

THE ASPEN

4 BEDROOM DETACHED HOUSE

 Calmont
Homes

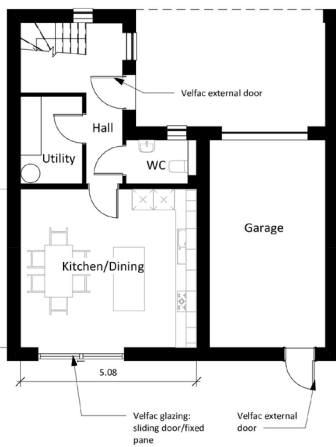
WWW.OAKMEADOWS.CO.UK

An individual property, the Aspen takes advantage of its extensive roof terrace with an extended first floor living area.

The kitchen/dining area of the home contains a large open plan kitchen with Velfac sliding doors and a stunning island providing optimum storage and dining space.

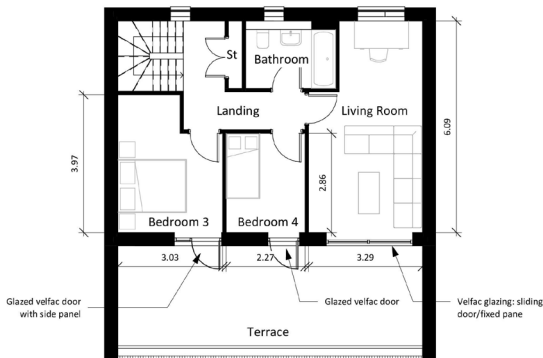
Premium, triple glazed aluminium and timber Velfac windows and external doors come as standard in every one of our properties. Buyers can choose from a selection of fitted kitchens all with integrated Bosch appliances and Porcelanosa bathrooms.

Buyers will also be able to select their own contemporary home flooring, tiling and decorative features alongside any of our dedicated paint colours that they wish to be used throughout the property, all of which have been curated for Oak Meadows by our interior designer.



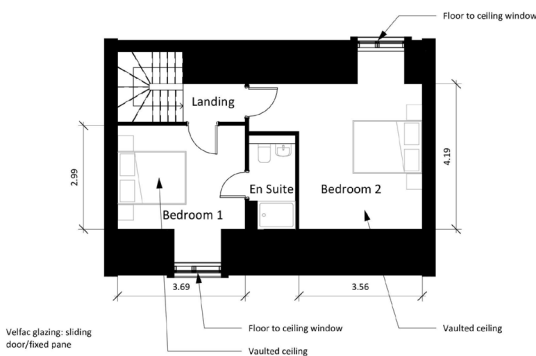
GROUND FLOOR

A huge open plan kitchen with an island and dining area, creates a large entertaining space. Also featured on the ground floor is a utility, cloakroom and garage.



FIRST FLOOR

An expansive roof terrace extending across the property, created an added multi-use space. This also brings additional light to the first floor living area and two of the property's bedrooms. Also on this floor is the family bathroom and a workstation area at the back of the living room.



SECOND FLOOR

Two large master bedrooms (including one ensuite) dominate the second floor, with floor to ceiling windows bringing in natural sunlight to each room.

Images shown are for illustrative purposes only. Although Calmont Homes has made every effort to ensure accuracy of information contained in this brochure, we reserve the right to amend and update the specification or layout without prior notification. The information contained herein is for guidance only and its accuracy is not guaranteed. They do not constitute a contract, part of a contract or warranty. External finishes may vary from those shown and dimensions given are approximate (measured to the widest part) and we cannot be held responsible if sizes vary from those indicated. Fireplaces (where shown) are not included in our usual specification. Please consult our Sales Executive with regards to specification and specific plots. You should take appropriate advice to verify any information on which you wish to rely.