

TATES

020 7602 6020



Latymer Court, Hammersmith Road, London W6 7LH

£4,000 Per month

- Three bedrooms
- Double reception
- Fifth floor with lift
- Heating and hot water inclusive of rent
- Close to Hammersmith & Barons Court Tube Stations
- Newly renovated throughout
- Two bathrooms
- Portered development
- Available now
- Energy Efficiency Rating Current Band: C

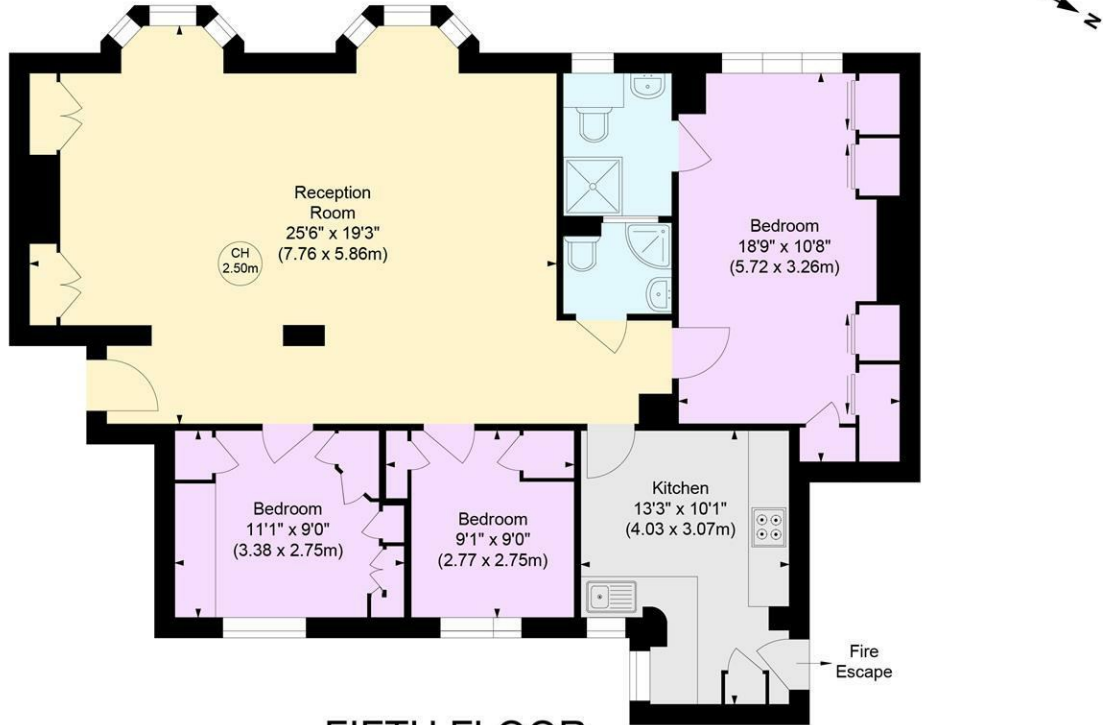
LATYMER COURT, W6

Approximate gross internal area

1030 sq ft / 95.71 sq m

Key :

CH - Ceiling Height



FIFTH FLOOR

Not to scale, for guidance only and must not be relied upon as a statement of fact.
All measurements and areas are approximate only

Whilst these particulars are produced in good faith and are believed to be correct, no guarantee is given, nor any responsibility accepted, by Tates nor by any of its representatives, for their accuracy. The particulars do not constitute part of any offer or contract, and it is recommended that such things as measurements, condition, structure, services, appliances, fixtures and fittings and facilities are all independently assessed by the prospective purchaser or renter of the subject property prior to committing to any contract.

Energy Efficiency Rating		
	Current	Potential
Very energy efficient - lower running costs		
(92 plus) A		
(81-91) B		
(69-80) C		
(55-68) D		
(39-54) E		
(21-38) F		
(1-20) G		
Not energy efficient - higher running costs		
EU Directive 2002/91/EC		
England & Wales		

135 Hammersmith Road, West Kensington, London W14 0QL

mail@tatesestates.co.uk

tatesestates.co.uk

Tates (Agents) Ltd. Registered in England and Wales No. 02356337

Registered Office: Imperial House, 8 Keane Street, London WC2B 4AS

