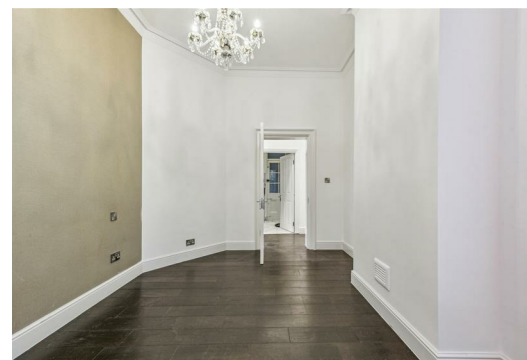


# TATES

020 7602 6020



## Fitzgeorge Avenue, London W14 0SZ

**£600,000**

- Two Double Bedrooms
- Gated Red Brick Mansion Block
- Beautiful Tree Lined Street
- Energy Efficiency Rating Current Band: D
- Contemporary Finish Throughout
- On Site Porter
- Moments from West Kensington and Hammersmith Stations
- Long Leasehold



FITZGEORGE AVENUE, W14

Approximate gross internal area  
761 sq ft / 70.68 sq m

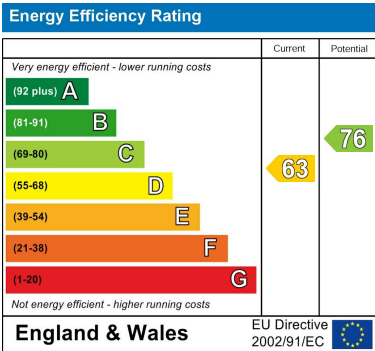
Key :  
CH - Ceiling Height



GROUND FLOOR

Not to scale, for guidance only and must not be relied upon as a statement of fact.  
All measurements and areas are approximate only

Whilst these particulars are produced in good faith and are believed to be correct, no guarantee is given, nor any responsibility accepted, by Tates nor by any of its representatives, for their accuracy. The particulars do not constitute part of any offer or contract, and it is recommended that such things as measurements, condition, structure, services, appliances, fixtures and fittings and facilities are all independently assessed by the prospective purchaser or renter of the subject property prior to committing to any contract.



135 Hammersmith Road, West Kensington, London W14 0QL    mail@tatesestates.co.uk    tatesestates.co.uk

Tates (Agents) Ltd. Registered in England and Wales No. 02356337  
Registered Office: Imperial House, 8 Keane Street, London WC2B 4AS

