

TATES

020 7602 6020



Kensington West, London W14 0JG

£585,000

- One Double Bedroom
- Contemporary Fully Equipped Kitchen
- 24 Hour Porter
- Close to Kensington Olympia Train Station
- South Facing Reception Room
- Modern Bathroom
- On Site Swimming Pool, Gym, Sauna & Squash Court
- Close to District, Piccadilly & Circle Line Tube Stations

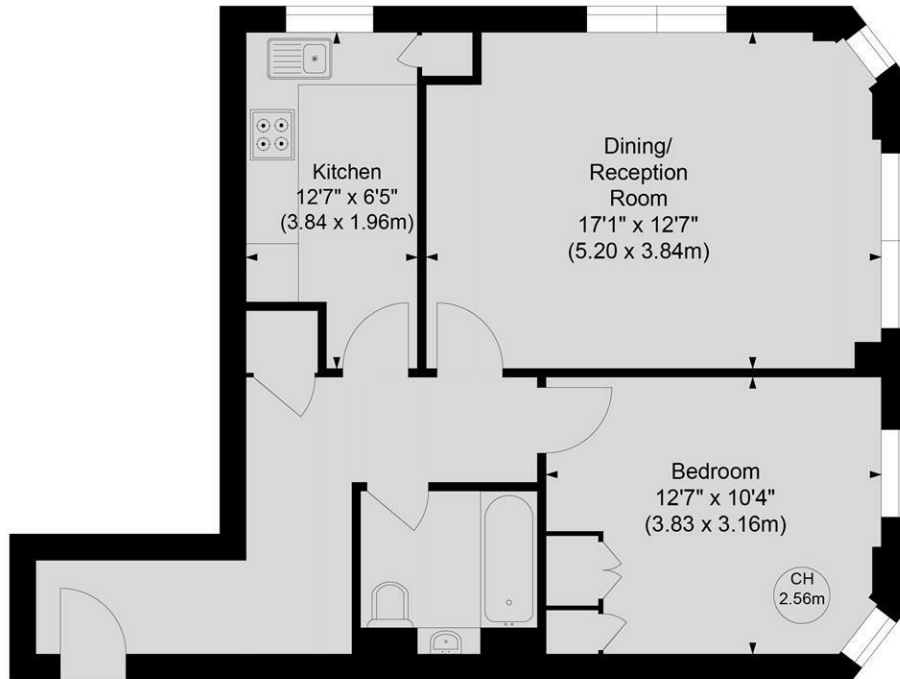
KENSINGTON WEST, W14

Approximate gross internal area

577 sq ft / 53.65 sq m

Key :

CH - Ceiling Height



GROUND FLOOR

Not to scale, for guidance only and must not be relied upon as a statement of fact.
All measurements and areas are approximate only

Whilst these particulars are produced in good faith and are believed to be correct, no guarantee is given, nor any responsibility accepted, by Tates nor by any of its representatives, for their accuracy. The particulars do not constitute part of any offer or contract, and it is recommended that such things as measurements, condition, structure, services, appliances, fixtures and fittings and facilities are all independently assessed by the prospective purchaser or renter of the subject property prior to committing to any contract.

Energy Efficiency Rating		
	Current	Potential
Very energy efficient - lower running costs		
(92 plus) A		
(81-91) B		
(69-80) C		
(55-68) D		
(39-54) E		
(21-38) F		
(1-20) G		
Not energy efficient - higher running costs		
England & Wales		EU Directive 2002/91/EC

135 Hammersmith Road, West Kensington, London W14 0QL

mail@tatesestates.co.uk

tatesestates.co.uk

Tates (Agents) Ltd. Registered in England and Wales No. 02356337

Registered Office: Imperial House, 8 Keane Street, London WC2B 4AS

