

TATES

020 7602 6020



Fitzgeorge Avenue, London W14 0SZ

£3,000 Per month

- Two Double Bedrooms
- Open Plan Living
- Gated Red Brick Mansion Block
- Available now
- Modern
- Wood Flooring Throughout
- Furnished
- Close to Barons Court & West Kensington Tube Stations

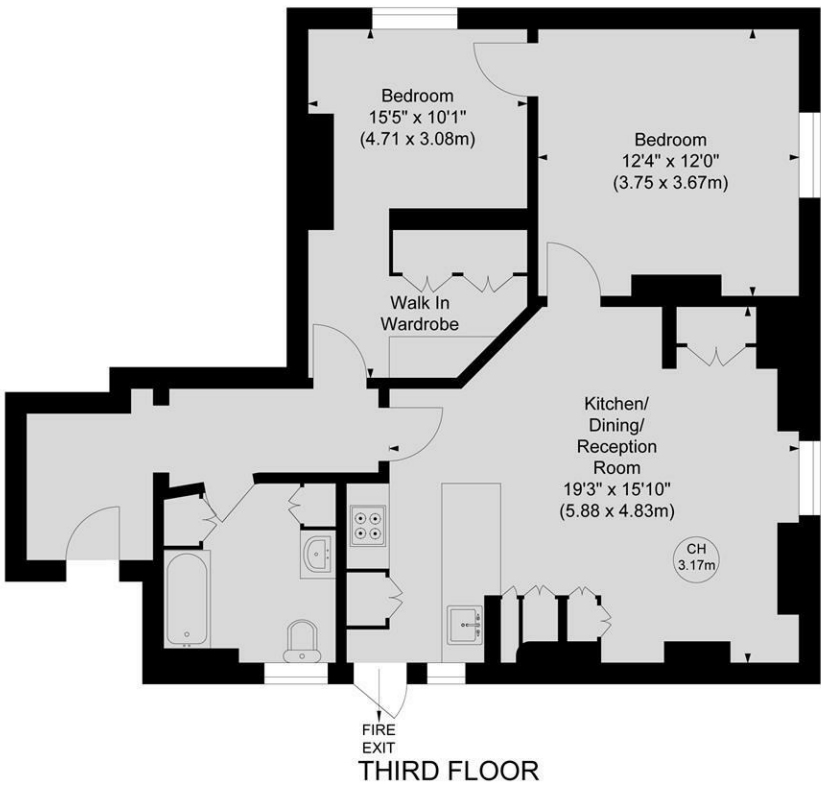
FITZ-GEORGE AVENUE, W14

Approximate gross internal area

789 sq ft / 73.34 sq m

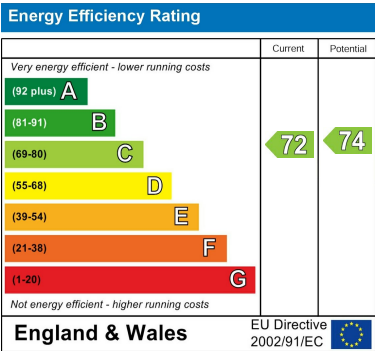
Key :

CH - Ceiling Height



Not to scale, for guidance only and must not be relied upon as a statement of fact.
All measurements and areas are approximate only

Whilst these particulars are produced in good faith and are believed to be correct, no guarantee is given, nor any responsibility accepted, by Tates nor by any of its representatives, for their accuracy. The particulars do not constitute part of any offer or contract, and it is recommended that such things as measurements, condition, structure, services, appliances, fixtures and fittings and facilities are all independently assessed by the prospective purchaser or renter of the subject property prior to committing to any contract.



135 Hammersmith Road, West Kensington, London W14 0QL mail@tatesestates.co.uk tatesestates.co.uk

Tates (Agents) Ltd. Registered in England and Wales No. 02356337
Registered Office: Imperial House, 8 Keane Street, London WC2B 4AS

