

TATES

020 7602 6020

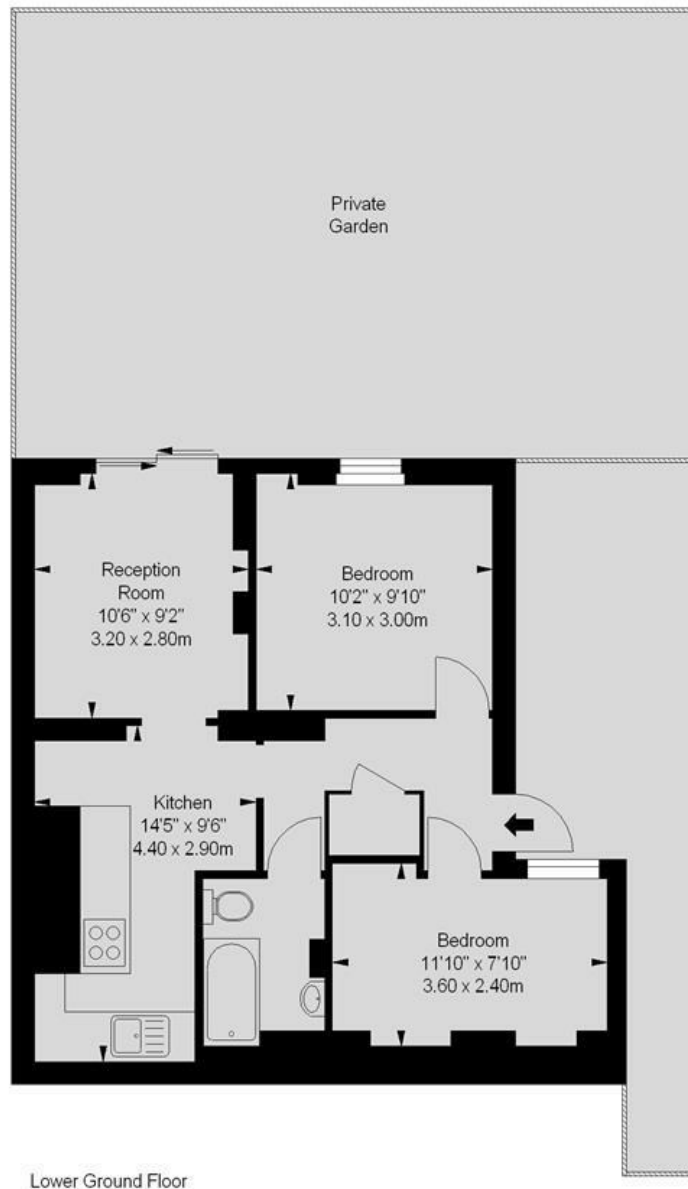


Edith Road, London W14 0TH

£2,250 Per month

- Two double bedrooms
- Furnished
- Close to Barons Court and West Kensington tube stations
- Council Tax Band D - Hammersmith & Fulham
- Available early October
- Large garden
- Energy Efficiency Rating Current Band: E

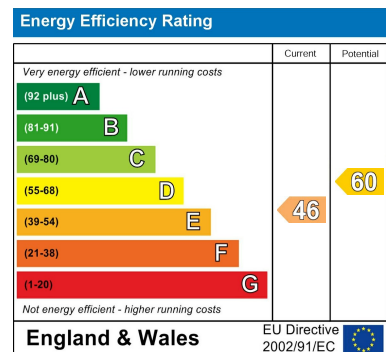
Edith Road, W14
 Approximate gross internal area
 540 sq ft / 50.17 sq m



Lower Ground Floor

Illustration For Identification Purposes Only. Not To Scale
 *Floorplan Drawn According To RICS Guidelines

Whilst these particulars are produced in good faith and are believed to be correct, no guarantee is given, nor any responsibility accepted, by Tates nor by any of its representatives, for their accuracy. The particulars do not constitute part of any offer or contract, and it is recommended that such things as measurements, condition, structure, services, appliances, fixtures and fittings and facilities are all independently assessed by the prospective purchaser or renter of the subject property prior to committing to any contract.



135 Hammersmith Road, West Kensington, London W14 0QL mail@tatesestates.co.uk tatesestates.co.uk

Tates (Agents) Ltd. Registered in England and Wales No. 02356337
 Registered Office: Imperial House, 8 Keane Street, London WC2B 4AS

