

TATES

020 7602 6020



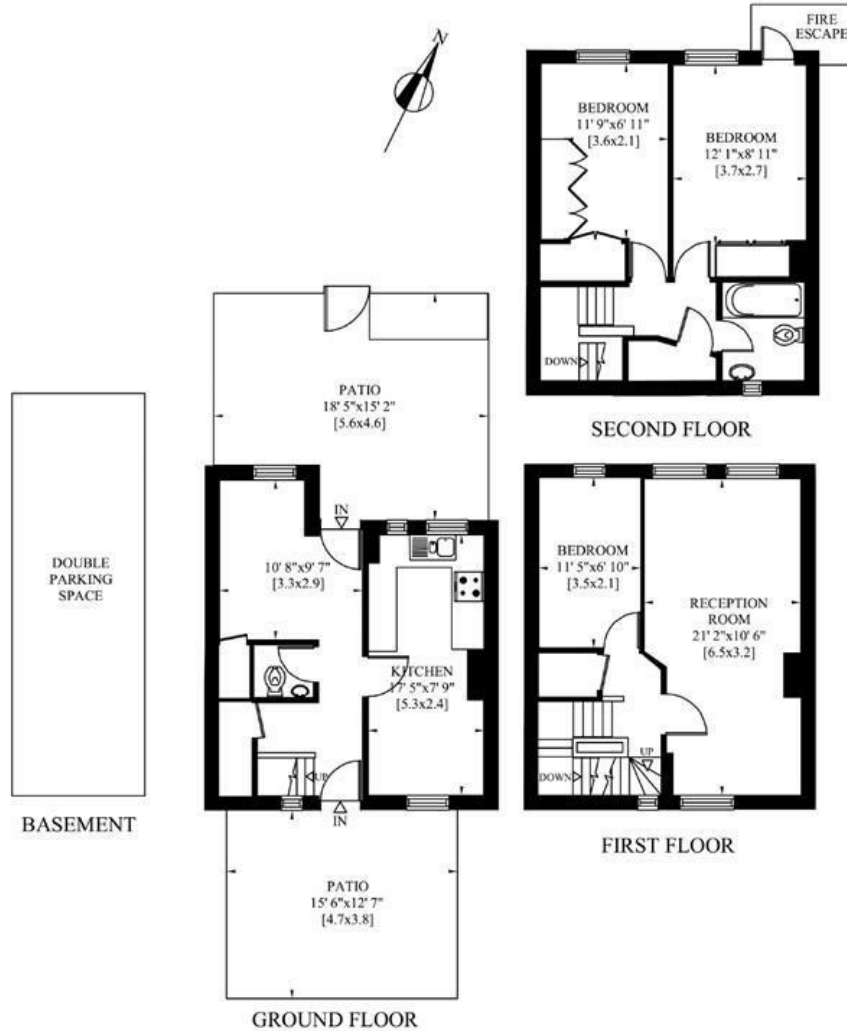
More Close, St Paul's Court, London W14 9BW

£830,000

- Three bedrooms
- Private patio garden
- Communal gardens
- Underground Parking
- Barons Court station (District & Piccadilly Lines)
- Large reception
- Arranged over three floors
- Gated development
- Hammersmith station (Circle, District, Piccadilly Lines)
- Share of Freehold

MORE CLOSE LONDON W14

Gross Internal Area: 101 Sq. metres
1083 Sq. feet



Whilst these particulars are produced in good faith and are believed to be correct, no guarantee is given, nor any responsibility accepted, by Tates nor by any of its representatives, for their accuracy. The particulars do not constitute part of any offer or contract, and it is recommended that such things as measurements, condition, structure, services, appliances, fixtures and fittings and facilities are all independently assessed by the prospective purchaser or renter of the subject property prior to committing to any contract.

Energy Efficiency Rating		
	Current	Potential
Very energy efficient - lower running costs		
(92 plus) A		
(81-91) B		
(69-80) C	78	78
(55-68) D		
(39-54) E		
(21-38) F		
(1-20) G		
Not energy efficient - higher running costs		
England & Wales	EU Directive 2002/91/EC	

135 Hammersmith Road, West Kensington, London W14 0QL mail@tatesestates.co.uk tatesestates.co.uk

Tates (Agents) Ltd. Registered in England and Wales No. 02356337
Registered Office: Imperial House, 8 Keane Street, London WC2B 4AS

