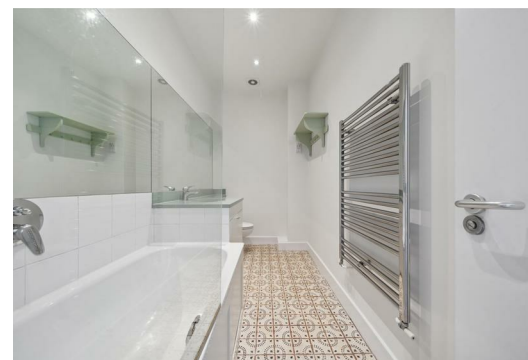


# TATES

020 7602 6020

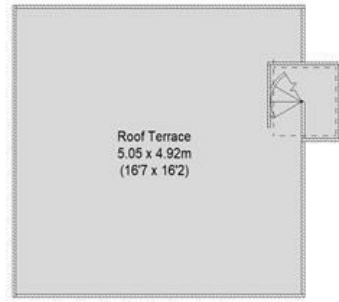


**Hazlitt Road, London W14 0JY**

**£3,300 Per month**

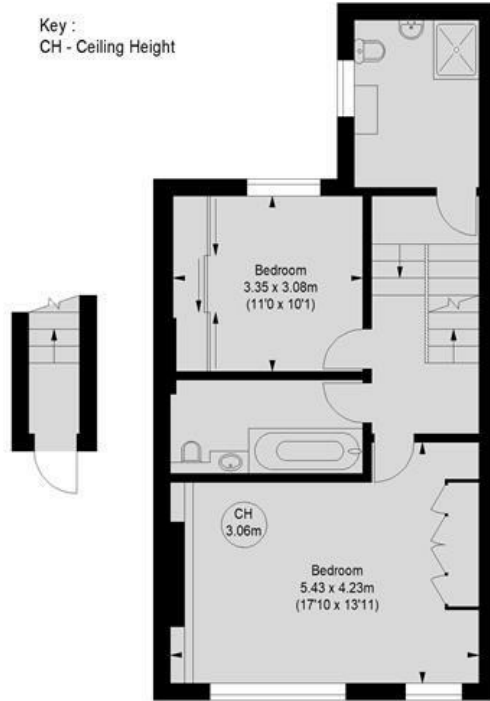
- Two double bedrooms
- Spacious reception
- Two terraces
- Split level apartment
- Available now
- Two bathrooms
- Open plan living
- Newly redecorated throughout
- High ceilings
- Moments from Kensington Olympia station

**HAZLITT ROAD, W14**  
 Approximate gross internal area  
 101.54 sq ft / 1093 sq m

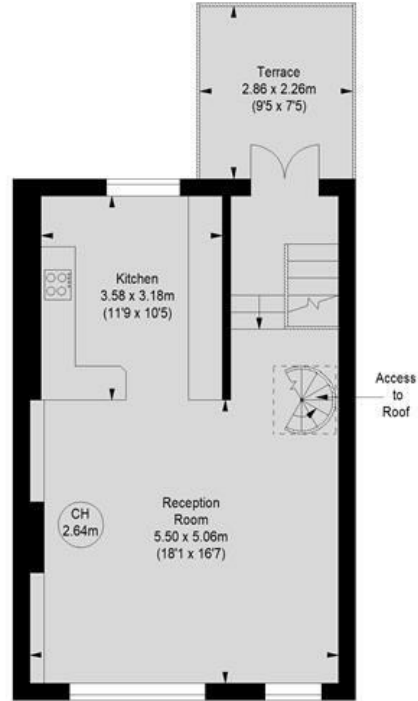


THIRD FLOOR

Key :  
 CH - Ceiling Height



FIRST FLOOR



SECOND FLOOR

GROUND FLOOR  
 ENTRANCE

Not to scale, for guidance only and must not be relied upon as a statement of fact.  
 All measurements and areas are approximate only

Whilst these particulars are produced in good faith and are believed to be correct, no guarantee is given, nor any responsibility accepted, by Tates nor by any of its representatives, for their accuracy. The particulars do not constitute part of any offer or contract, and it is recommended that such things as measurements, condition, structure, services, appliances, fixtures and fittings and facilities are all independently assessed by the prospective purchaser or renter of the subject property prior to committing to any contract.

Energy Efficiency Rating		Current	Potential
Very energy efficient - lower running costs			
(92 plus) <b>A</b>			
(81-91) <b>B</b>			
(69-80) <b>C</b>			<b>70</b>
(55-68) <b>D</b>		<b>49</b>	
(39-54) <b>E</b>			
(21-38) <b>F</b>			
(1-20) <b>G</b>			
Not energy efficient - higher running costs			
<b>England &amp; Wales</b>		EU Directive 2002/91/EC	

135 Hammersmith Road, West Kensington, London W14 0QL

mail@tatesestates.co.uk

tatesestates.co.uk

Tates (Agents) Ltd. Registered in England and Wales No. 02356337  
 Registered Office: Imperial House, 8 Keane Street, London WC2B 4AS

